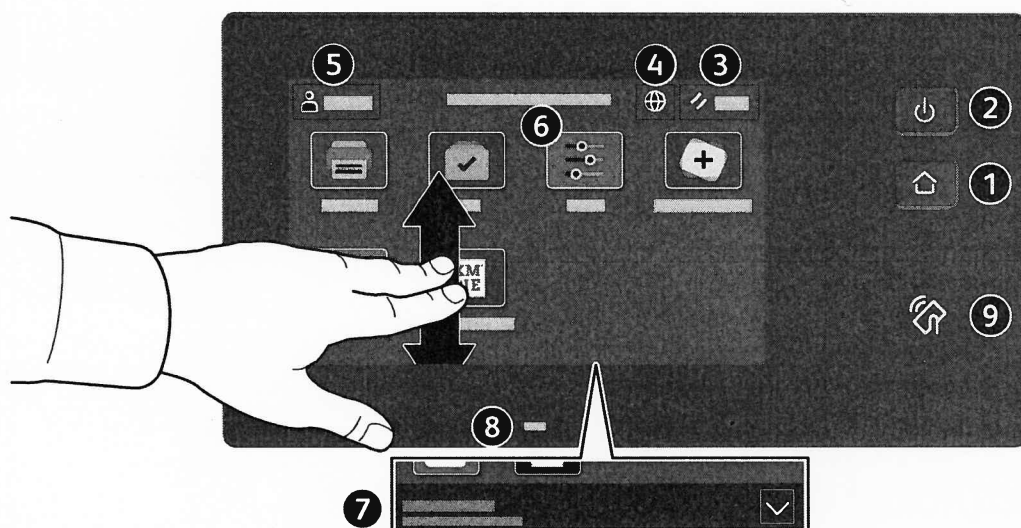


Upravljačka ploča

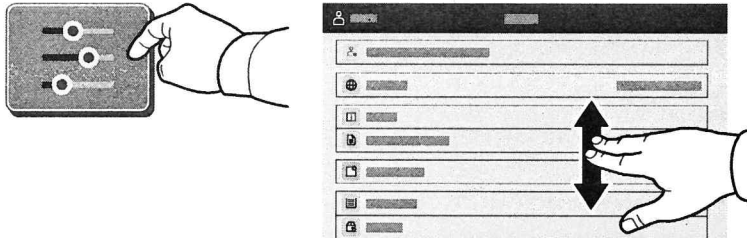
Dostupne aplikacije mogu se razlikovati ovisno o postavi pisača. Pojediniosti o aplikacijama i značajkama potražite u *User Guide* (Korisničkom vodiču).



- 1 **Početna** nas vraća na glavni zaslon aplikacija.
- 2 **Napajanje/Wake** pokreće pisač ili pruža mogućnosti mirovanja, ponovnog pokretanja ili isključivanja pisača.
- 3 **Reset** vraća postavke na zadane vrijednosti u svim aplikacijama.
- 4 **Language** pruža izbor jezika na zaslonu.
- 5 **Log in** pruža poseban pristup alatima i postavkama.
- 6 **Device app** pruža pristup informacijama o pisaču i postavkama.
- 7 **Natpis s obavijesti** prikazuje status pisača i upozorenja. Da biste vidjeli sve obavijesti, dodirnite natpis. Za zatvaranje natpisa dodirnite strelicu prema dolje.
- 8 **Pokazivač statusa** pokazuje status pisača. Za detaljne informacije pogledajte *User Guide* (Korisničkom vodiču).
- 9 **Područje NFC-a** omogućuje uparivanje s mobilnim uređajem radi ispisa iz aplikacije.

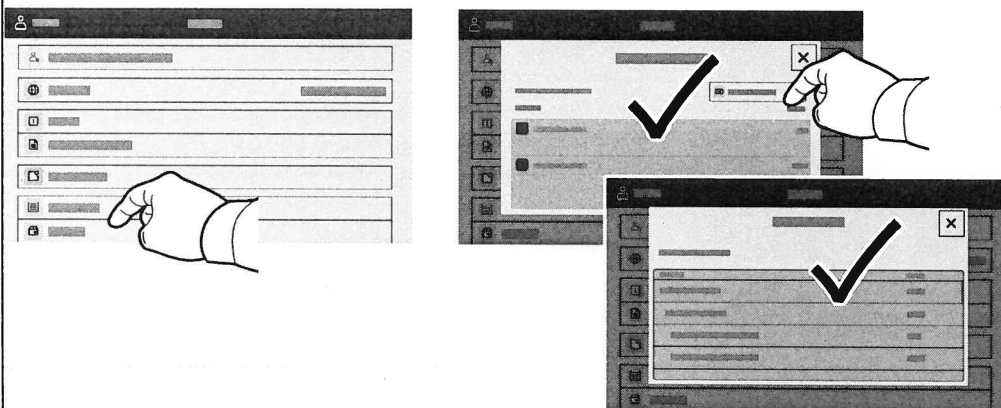
Aplikacija Uređaj

Aplikacija Uređaj pruža pristup statusu zaliha, informacijama o pisaču i postavkama. Neki izbornici i postavke zahtijevaju prijavu uz ime i lozinku administratora.



Informacije o naplati i upotrebi

U izborniku Značajke uređaja, za prikaz osnovnog zbroja otisaka, dodirnite **Billing/Usage** (Napлата/korištenje). Za detaljni prikaz broja korištenja dodirnite **Usage Counters** (Brojači korištenja). Popis pruža detaljne kategorije zbroja otisaka.

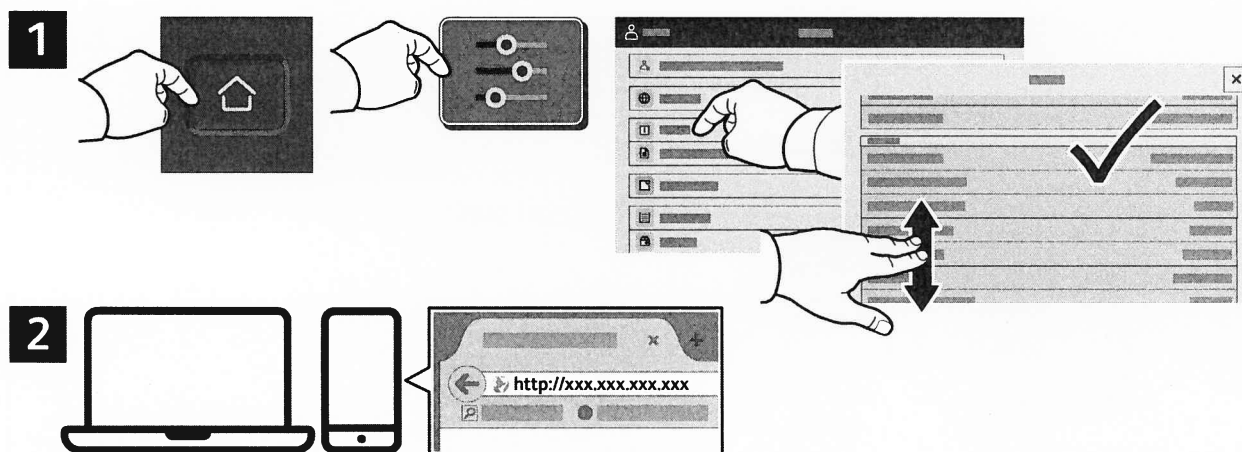


Ugrađeni web-poslužitelj

Xerox® ugrađeni web-poslužitelj omogućuje vam pristup konfiguracijskim podacima pisača, statusu papira i potrošnog materijala, statusu zadatka i dijagnostičkim funkcijama putem mreže.

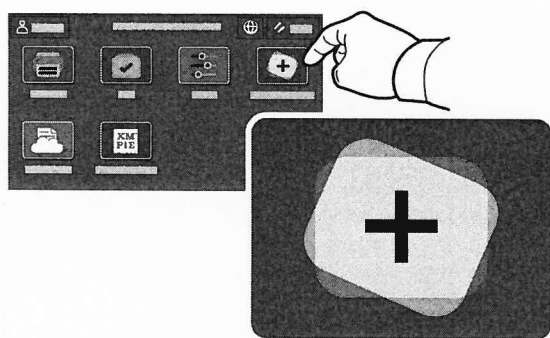
Da biste se povezali, u web-preglednik upišite IP adresu pisača. IPv4 adresa mreže dostupna je na dodirnom zaslonu upravljačke ploče. Dodirnite aplikaciju **Device** (Uređaj) > **About** (Više o), a zatim se pomaknite dolje.

Pojedinosti o upotrebi ugrađenog web-poslužitelja potražite u v *User Guide* (Korisničkom vodiču) na web-mjestu Xerox.com.



App Gallery

Xerox App Gallery ima rastuću zbirku aplikacija za produktivnost koje možete instalirati na svoj pisač. Pronađite aplikaciju na svojem početnom zaslonu i izravno izradite prijavu ili idite na www.xerox.com/appgallery da biste se prijavili i dodali svoj uređaj. Da biste pojednostavnili instalaciju aplikacije, za vjerodajnice za prijavu u galeriju aplikacija upotrijebite isto ime koje ste upotrijebili za prijavu pisača.

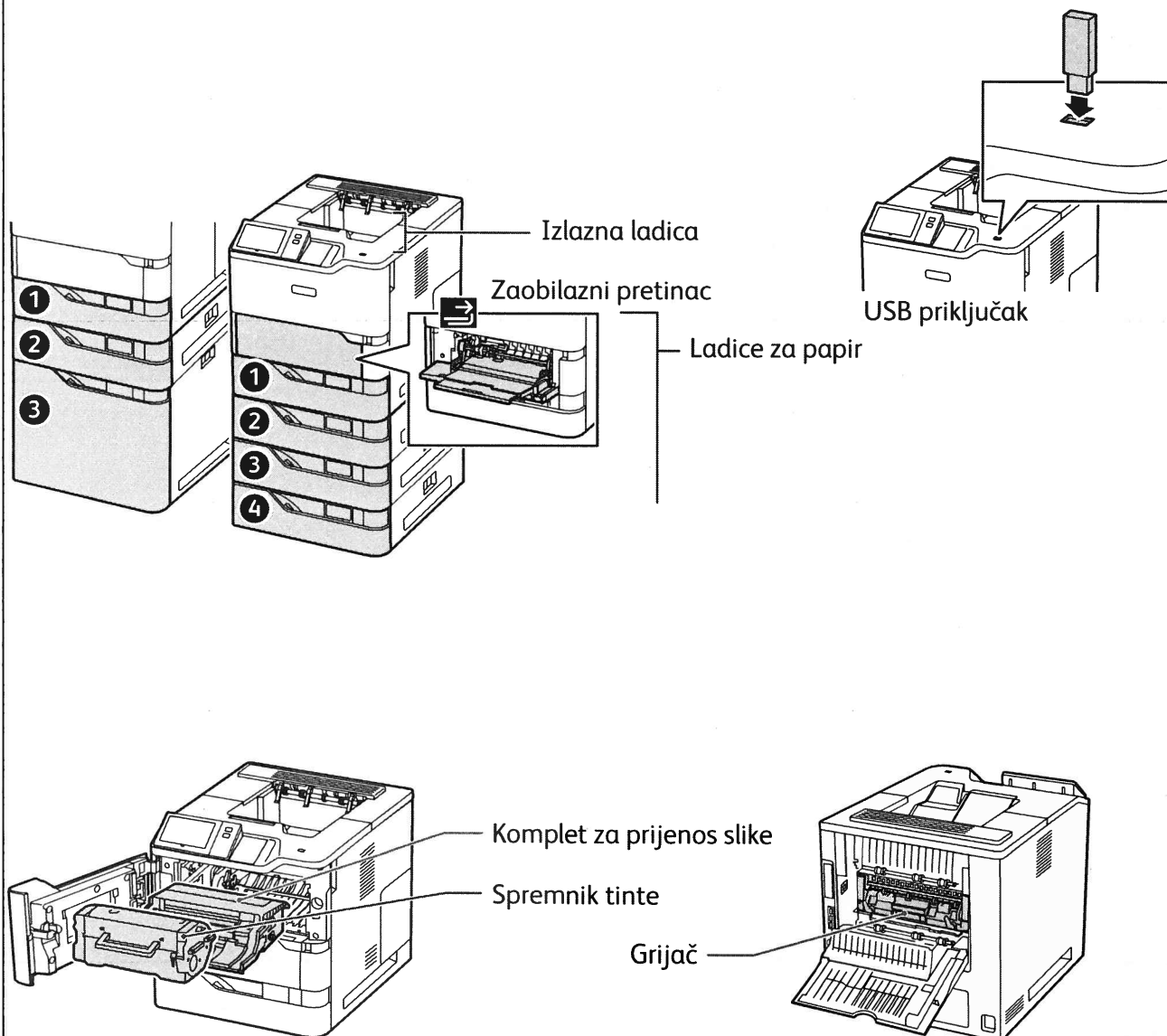


www.xerox.com/appgallery

www.xerox.com/office/support

Vodič za pislač

Opcijski dodaci mogu biti dijelom vaše postave pislaća. Detaljne informacije potražite u *User Guide* (Korisničkom vodiću).



Rukovanje papirom

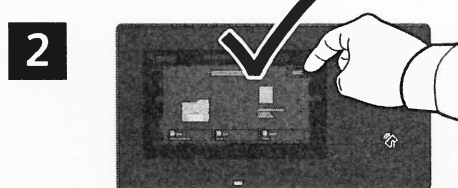
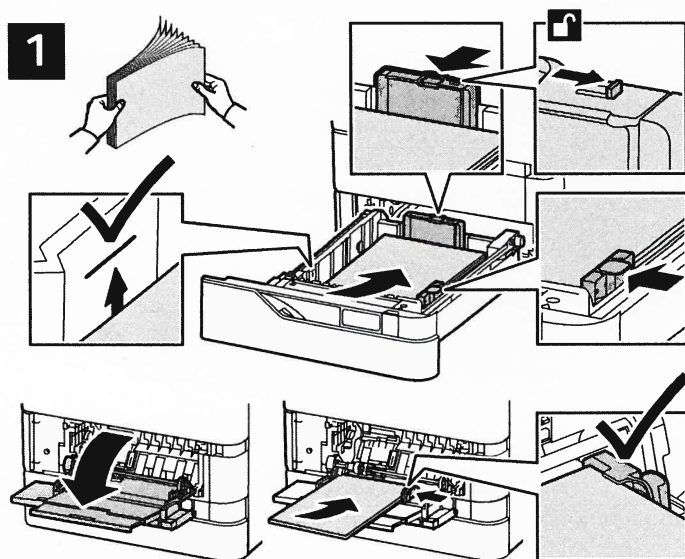
Za cjelokupni popis vrsta papira koje odgovaraju vašem pisaču pogledajte Popis preporučenih medija na:

www.xerox.com/rmlna (SAD i Kanada)

www.xerox.com/rmleu (Europa)

Pojedinosti o ladicama i papiru potražite u *User Guide* (Korisničkom vodiču).

Umetanje papira



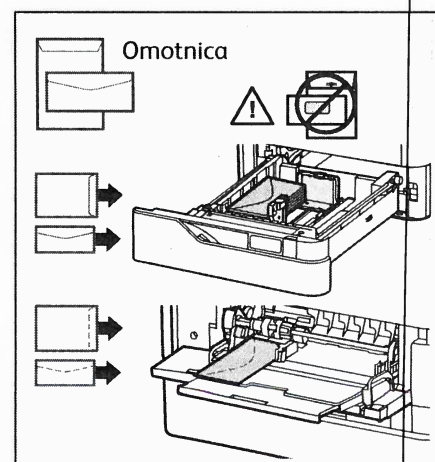
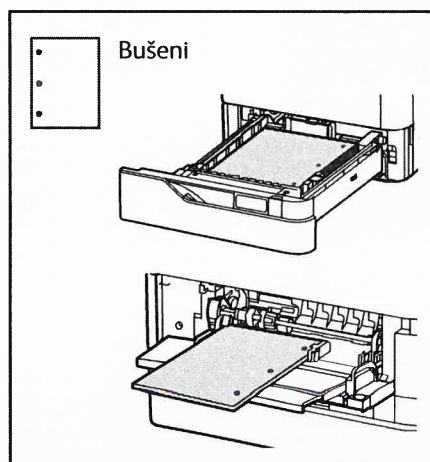
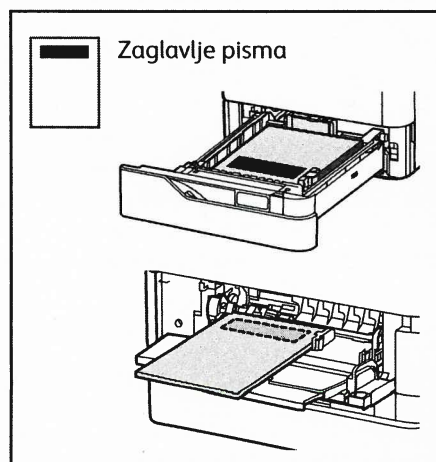
Potvrdite ili promijenite veličinu i postavke vrste ako je potrebno.



Pri ispisu odaberite mogućnosti u upravljačkom programu pisača.

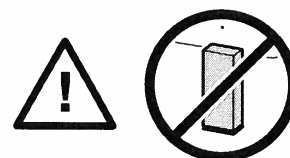
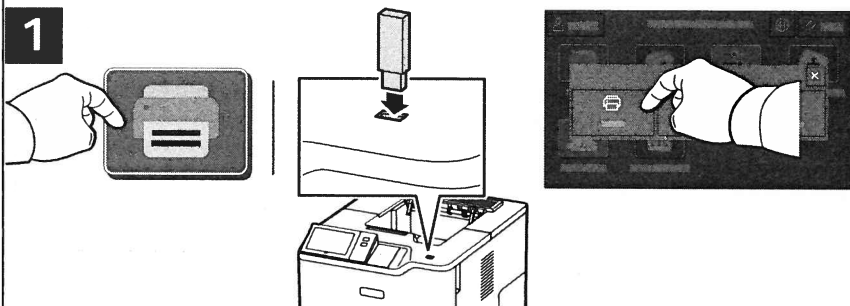
Za najbolje rezultate razgranajte rubove papira. Prilagodite vodilice veličini papira. Ne umećite papir iznad crte maksimalne ispune.

Usmjerenje papira



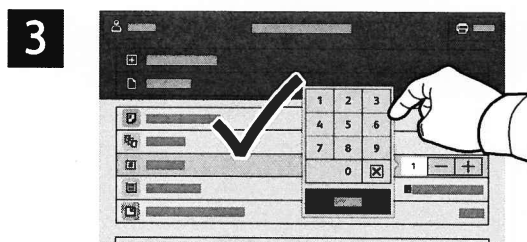
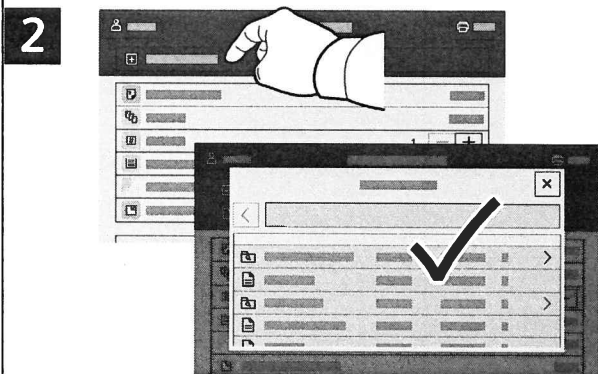
Ispis s USB izbrisivog memorijskog pogona

Možete ispisivati .pdf, .tiff, .ps, .xps i druge vrste datoteka izravno s USB izbrisivog memorijskog pogona. Detaljne informacije potražite u *User Guide* (Korisničkom vodiču).



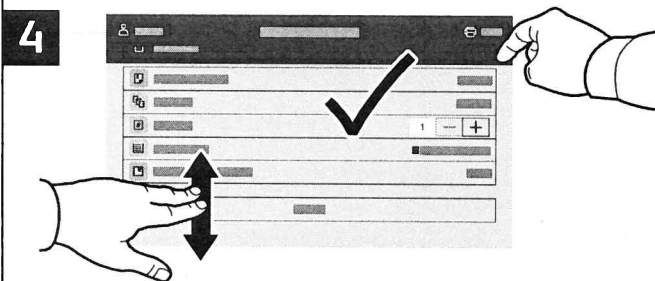
Ne uklanjajte USB izbrisivi memorijski pogon tijekom čitanja. Datoteke se mogu oštetiti.

Dodirnite **Print From** (Ispis s) ili umetnite USB izbrisivi memorijski pogon, a zatim odaberite **Print From USB** (Ispis s USB-a).

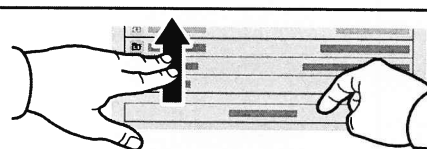


Za odabir broja kopija dodirnite znak za plus (+) ili minus (-). Za veće brojeve dodirnite **Quantity** (Količina) pa unesite broj.

Dodirnite **Add Document** (Dodaj dokument) pa navigirajte do datoteka i odaberite ih.



Odaberite postavke po želji, a zatim dodirnite **Print** (Ispis).

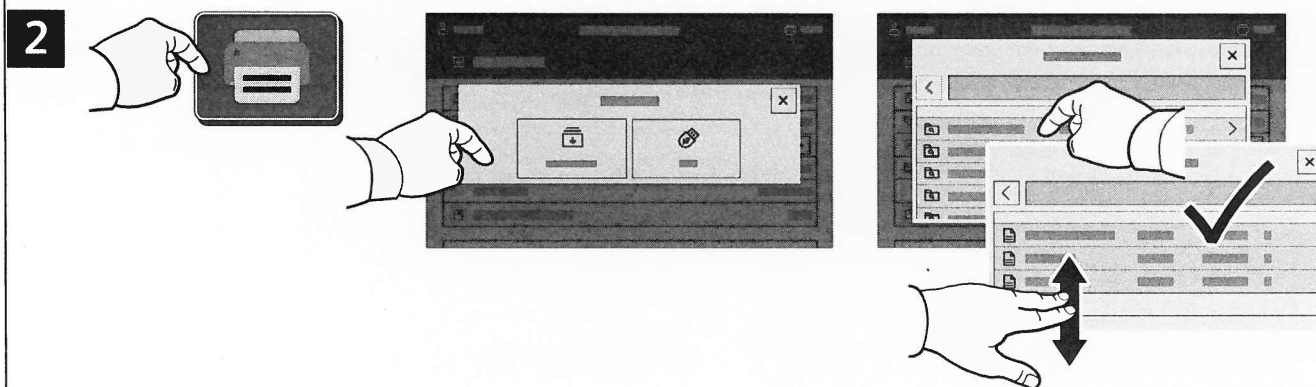


Napomena: Postavke prethodnih korisnika na zaslonu ostaju kratko. Za vraćanje zadanih postavki u aplikaciji pomaknite se do dna popisa značajki i dodirnite **Reset** (Vraćanje).

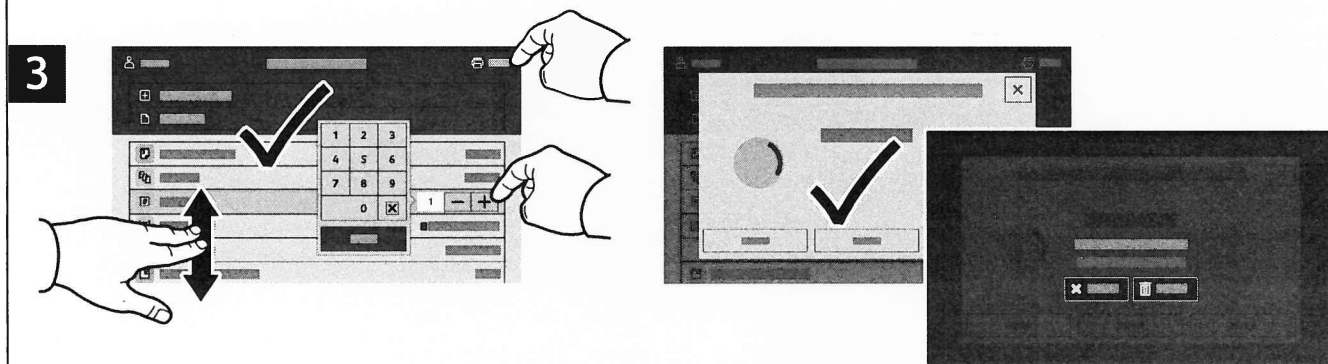
Zadaci za ispis pohranjeni u pisaču



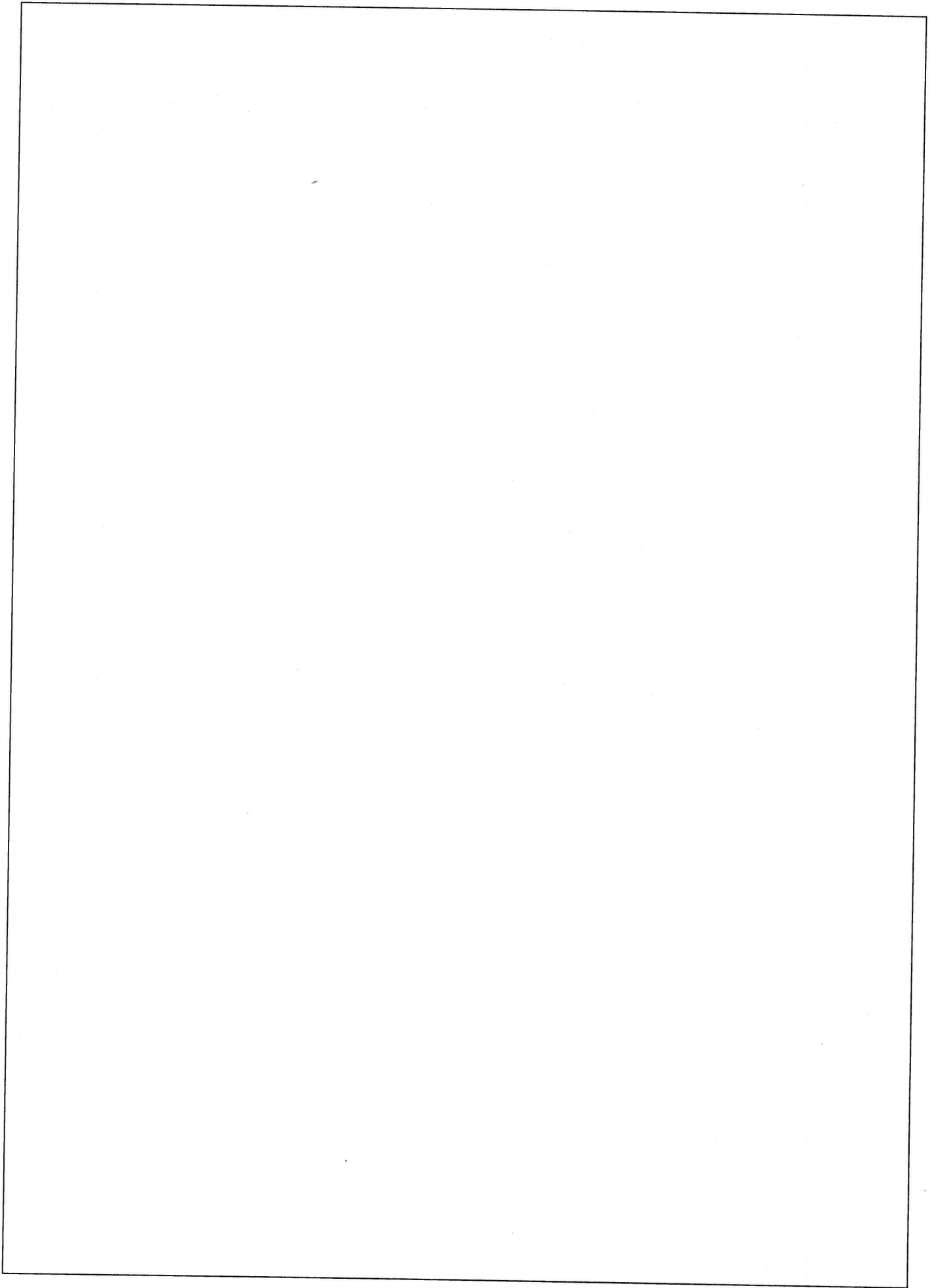
Zadatak za ispis možete poslati i spremiti u pisač, a zatim kasnije odabrati zadatak na upravljačkoj ploči pisača i ispisati ga. Zadaci se mogu spremiti u javnu mapu ili se zaštititi lozinkom. U upravljačkom programu Xerox® pisača odaberite **Properties** (Značajke) (Windows) ili **Xerox Features** (Xerox značajke) (Mac OS), a zatim **Job Type** (Vrsta zadatka). Odaberite **Saved Jobs** (Spremljeni zadatak) ili **Secure Print** (Sigurni ispis). Za Sigurni ispis upišite lozinku. Kliknite **OK** (U redu) i ispišite zadatak.



Dodirnite **Print From** (Ispis s) pa dodirnite **Saved Jobs** (Spremljeni zadaci). Odaberite **Default Public Folder** (Zadana javna mapa) a pa odaberite zadatak za ispis.



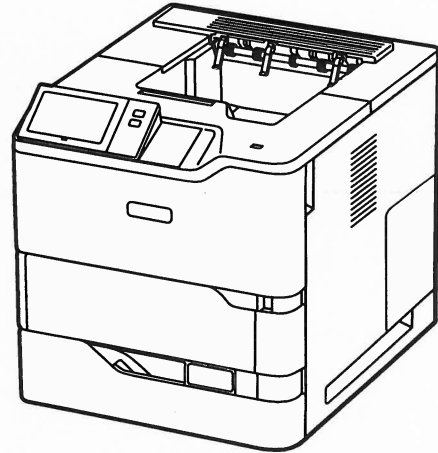
Odaberite postavke s popisa. Za odabir broja kopija dodirnite znak za plus (+) ili minus (-). Za veće brojeve dodirnite **Quantity** (Kvantiteta) pa unesite broj. Dodirnite **Print** (Ispis). Za brisanje zadatka na zaslenu za ispis i zaslenu za potvrdu dodirnite **Delete** (Izbrisi).



Xerox® VersaLink® B620 Printer

Configurable, connected, and highly capable.

The VersaLink® B620 Printer gives you the freedom to work where and how you want. Loaded with features designed to increase productivity, this highly configurable, cloud-connected workplace assistant delivers completely new capabilities that go far beyond the competition. You can count on the B620 to make your business more efficient.



PRINT, CLOUD



65 ppm Letter
61 ppm A4



Solutions



Cloud connectivity



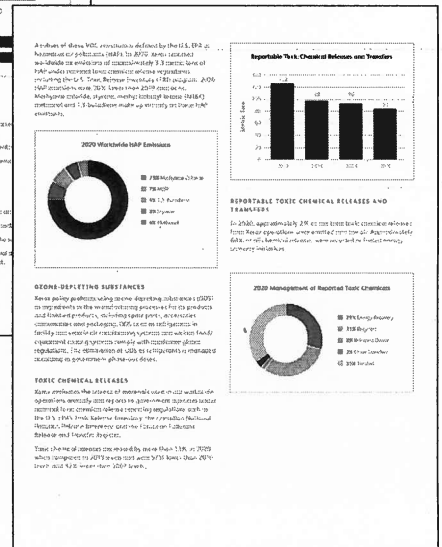
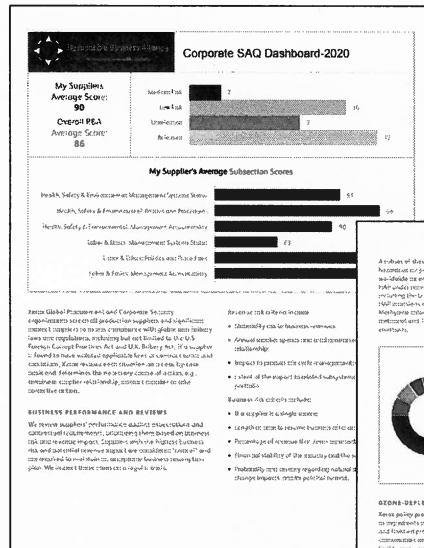
1200 x 1200 dpi

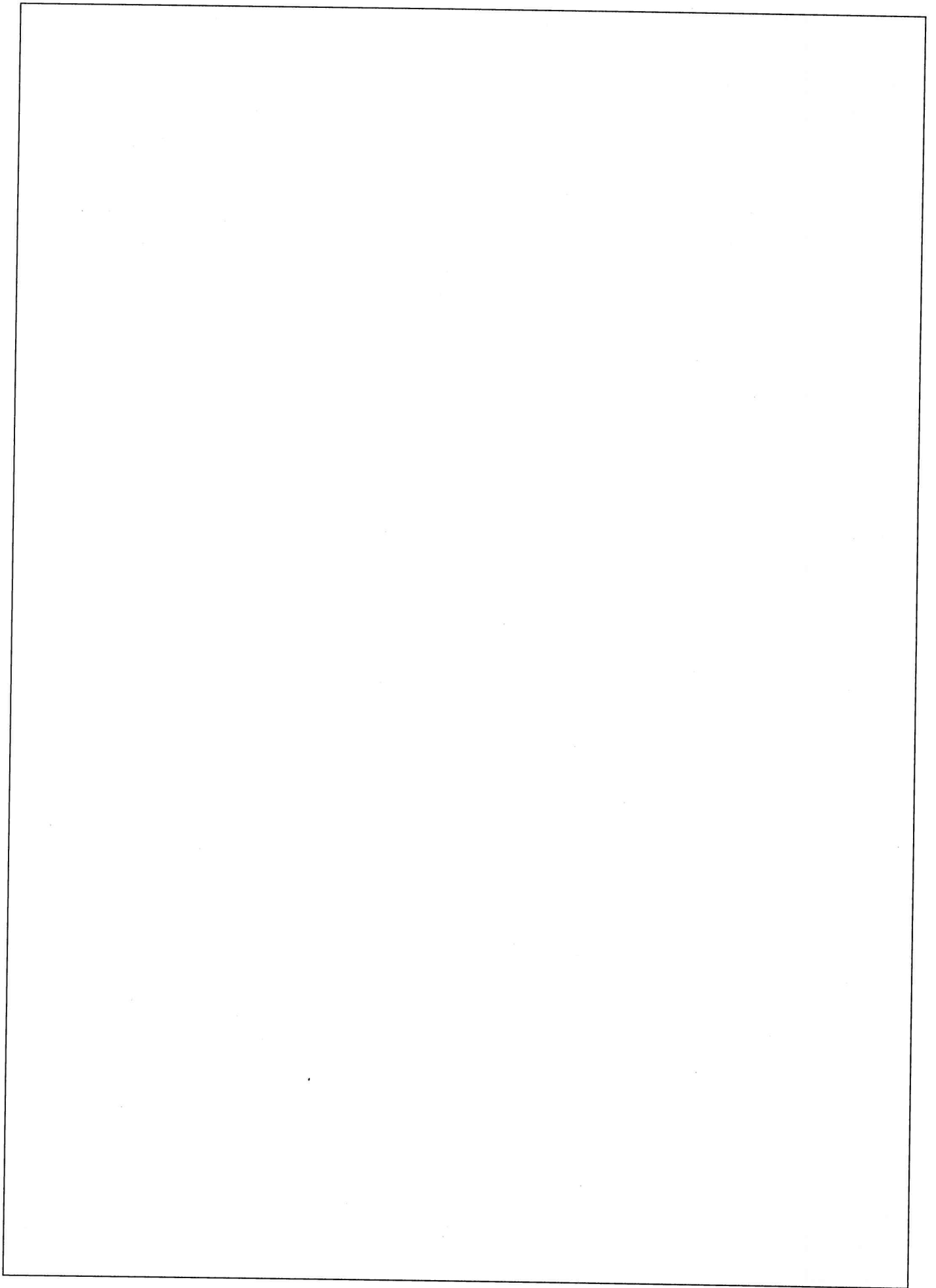


Up to 3,850 pages



Optional: 3 additional
paper trays





Popis fontova PCL5, Stranica 1

Osnovni fontovi

Položaj	Naziv fonta	Ispis uzorka
1	Courier «Esc»(Symbol set«Esc»(s0p«pitch»h0s0b4099T	'ABCDEFGFGabcdefg0123456789&?!.,'
2	CG Times «Esc»(Symbol set«Esc»(s1p«size»v0s0b4101T	'ABCDEFGFGabcdefg0123456789&?!.,'
3	CG Times Bold «Esc»(Symbol set«Esc»(s1p«size»v0s3b4101T	' ABCDEFGFGabcdefg0123456789&?!.,'
4	CG Times Italic «Esc»(Symbol set«Esc»(s1p«size»v1s0b4101T	' <i>ABCDEFGFGabcdefg0123456789&?!.,'</i>
5	CG Times Bold Italic «Esc»(Symbol set«Esc»(s1p«size»v1s3b4101T	' <i>ABCDEFGFGabcdefg0123456789&?!.,'</i>
6	CG Omega «Esc»(Symbol set«Esc»(s1p«size»v0s0b4113T	'ABCDEFGFGabcdefg0123456789&?!.,'
7	CG Omega Bold «Esc»(Symbol set«Esc»(s1p«size»v0s3b4113T	' ABCDEFGFGabcdefg0123456789&?!.,'
8	CG Omega Italic «Esc»(Symbol set«Esc»(s1p«size»v1s0b4113T	' <i>ABCDEFGFGabcdefg0123456789&?!.,'</i>
9	CG Omega Bold Italic «Esc»(Symbol set«Esc»(s1p«size»v1s3b4113T	' <i>ABCDEFGFGabcdefg0123456789&?!.,'</i>
10	Coronet «Esc»(Symbol set«Esc»(s1p«size»v1s0b4116T	' <i>ABCDEF<i>G</i>abcdefg0123456789&?!.,'</i>
11	Clarendon Condensed «Esc»(Symbol set«Esc»(s1p«size»v4s3b4140T	' ABCDEFGFGabcdefg0123456789&?!.,'
12	Univers Medium «Esc»(Symbol set«Esc»(s1p«size»v0s0b4148T	'ABCDEFGFGabcdefg0123456789&?!.,'
13	Univers Bold «Esc»(Symbol set«Esc»(s1p«size»v0s3b4148T	' ABCDEFGFGabcdefg0123456789&?!.,'
14	Univers Medium Italic «Esc»(Symbol set«Esc»(s1p«size»v1s0b4148T	' <i>ABCDEFGFGabcdefg0123456789&?!.,'</i>
15	Univers Bold Italic «Esc»(Symbol set«Esc»(s1p«size»v1s3b4148T	' <i>ABCDEFGFGabcdefg0123456789&?!.,'</i>
16	Univers Medium Condensed «Esc»(Symbol set«Esc»(s1p«size»v4s0b4148T	'ABCDEFGFGabcdefg0123456789&?!.,'
17	Univers Bold Condensed «Esc»(Symbol set«Esc»(s1p«size»v4s3b4148T	' ABCDEFGFGabcdefg0123456789&?!.,'
18	Univers Medium Condensed Italic «Esc»(Symbol set«Esc»(s1p«size»v5s0b4148T	' <i>ABCDEFGFGabcdefg0123456789&?!.,'</i>

Osnovni fontovi

Položaj	Naziv fonta	Ispis uzorka
19	Univers Bold Condensed Italic «Esc»(Symbol set«Esc»(s1p«size»v5s3b4148T	' ABCDEFGGabcdefg0123456789&?!.,'
20	Antique Olive «Esc»(Symbol set«Esc»(s1p«size»v0s0b4168T	'ABCDEF G abcdefg0123456789&?!.,'
21	Antique Olive Bold «Esc»(Symbol set«Esc»(s1p«size»v0s3b4168T	' ABCDEFGGabcdefg0123456789&?!.,'
22	Antique Olive Italic «Esc»(Symbol set«Esc»(s1p«size»v1s0b4168T	' <i>ABCDEFGGabcdefg0123456789&?!.,'</i>
23	Garamond Antiqua «Esc»(Symbol set«Esc»(s1p«size»v0s0b4197T	'ABCDEF G abcdefg0123456789&?!.,'
24	Garamond Halbfett «Esc»(Symbol set«Esc»(s1p«size»v0s3b4197T	'ABCDEF G abcdefg0123456789&?!.,'
25	Garamond Kursiv «Esc»(Symbol set«Esc»(s1p«size»v1s0b4197T	' <i>ABCDEFGGabcdefg0123456789&?!.,'</i>
26	Garamond Kursiv Halbfett «Esc»(Symbol set«Esc»(s1p«size»v1s3b4197T	' <i>ABCDEFGGabcdefg0123456789&?!.,'</i>
27	Marigold «Esc»(Symbol set«Esc»(s1p«size»v0s0b4297T	'ABCDEF G abcdefg0123456789&?!.,'
28	Albertus Medium «Esc»(Symbol set«Esc»(s1p«size»v0s1b4362T	'ABCDEF G abcdefg0123456789&?!.,'
29	Albertus Extra Bold «Esc»(Symbol set«Esc»(s1p«size»v0s4b4362T	' ABCDEFGGabcdefg0123456789&?!.,'
30	Ryadh «Esc»(Symbol set«Esc»(s1p«size»v0s0b4859T	ABCDEF G abcdefg0123456789&?!.,'
31	Ryadh Bold «Esc»(Symbol set«Esc»(s1p«size»v0s3b4859T	ABCDEF G abcdefg0123456789&?!.,'
32	Malka «Esc»(Symbol set«Esc»(s1p«size»v0s0b16584T	ABCDEF G abcdefg0123456789&?!.,'
33	Malka Bold «Esc»(Symbol set«Esc»(s1p«size»v0s3b16584T	ABCDEF G abcdefg0123456789&?!.,'
34	Malka Italic «Esc»(Symbol set«Esc»(s1p«size»v1s0b16584T	<i>ABCDEFGGabcdefg0123456789&?!.,'</i>
35	Dorit «Esc»(Symbol set«Esc»(s1p«size»v0s0b16585T	ABCDEF G abcdefg0123456789&?!.,'
36	Dorit Bold «Esc»(Symbol set«Esc»(s1p«size»v0s3b16585T	ABCDEF G abcdefg0123456789&?!.,'

Popis fontova PCL5, Stranica 3

Osnovni fontovi

Položaj	Naziv fonta	Ispis uzorka
37	Naamit «Esc»(Symbol set«Esc»(s1p«size»v0s0b16587T	ABCDEFGHabcdefgh0123456789&?!.,'
38	Naamit Bold «Esc»(Symbol set«Esc»(s1p«size»v0s3b16587T	ABCDEFGHabcdefgh0123456789&?!.,'
39	Arial «Esc»(Symbol set«Esc»(s1p«size»v0s0b16602T	'ABCDEFGHabcdefgh0123456789&?!.,'
40	Arial Bold «Esc»(Symbol set«Esc»(s1p«size»v0s3b16602T	'ABCDEFGHabcdefgh0123456789&?!.,'
41	Arial Italic «Esc»(Symbol set«Esc»(s1p«size»v1s0b16602T	<i>'ABCDEFGHabcdefgh0123456789&?!.,'</i>
42	Arial Bold Italic «Esc»(Symbol set«Esc»(s1p«size»v1s3b16602T	<i>'ABCDEFGHabcdefgh0123456789&?!.,'</i>
43	Times New Roman «Esc»(Symbol set«Esc»(s1p«size»v0s0b16901T	'ABCDEFGHabcdefgh0123456789&?!.,'
44	Times New Roman Bold «Esc»(Symbol set«Esc»(s1p«size»v0s3b16901T	'ABCDEFGHabcdefgh0123456789&?!.,'
45	Times New Roman Italic «Esc»(Symbol set«Esc»(s1p«size»v1s0b16901T	<i>'ABCDEFGHabcdefgh0123456789&?!.,'</i>
46	Times New Roman Bold Italic «Esc»(Symbol set«Esc»(s1p«size»v1s3b16901T	<i>'ABCDEFGHabcdefgh0123456789&?!.,'</i>
47	Helvetica «Esc»(Symbol set«Esc»(s1p«size»v0s0b24580T	'ABCDEFGHabcdefgh0123456789&?!.,'
48	Helvetica Bold «Esc»(Symbol set«Esc»(s1p«size»v0s3b24580T	'ABCDEFGHabcdefgh0123456789&?!.,'
49	Helvetica Oblique «Esc»(Symbol set«Esc»(s1p«size»v1s0b24580T	<i>'ABCDEFGHabcdefgh0123456789&?!.,'</i>
50	Helvetica Bold Oblique «Esc»(Symbol set«Esc»(s1p«size»v1s3b24580T	<i>'ABCDEFGHabcdefgh0123456789&?!.,'</i>
51	Helvetica Narrow «Esc»(Symbol set«Esc»(s1p«size»v4s0b24580T	'ABCDEFGHabcdefgh0123456789&?!.,'
52	Helvetica Narrow Bold «Esc»(Symbol set«Esc»(s1p«size»v4s3b24580T	'ABCDEFGHabcdefgh0123456789&?!.,'
53	Helvetica Narrow Oblique «Esc»(Symbol set«Esc»(s1p«size»v5s0b24580T	<i>'ABCDEFGHabcdefgh0123456789&?!.,'</i>
54	Helvetica Narrow Bold Oblique «Esc»(Symbol set«Esc»(s1p«size»v5s3b24580T	<i>'ABCDEFGHabcdefgh0123456789&?!.,'</i>

Osnovni fontovi

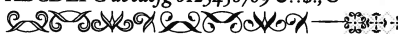
Položaj	Naziv fonta	Ispis uzorka
55	Palatino Roman «Esc»(Symbol set«Esc»(s1p«size»v0s0b24591T	'ABCDEFGabcdefg0123456789&!.,'
56	Palatino Bold «Esc»(Symbol set«Esc»(s1p«size»v0s3b24591T	'ABCDEFGabcdefg0123456789&!.,'
57	Palatino Italic «Esc»(Symbol set«Esc»(s1p«size»v1s0b24591T	'ABCDEFGabcdefg0123456789&!.,'
58	Palatino Bold Italic «Esc»(Symbol set«Esc»(s1p«size»v1s3b24591T	'ABCDEFGabcdefg0123456789&!.,'
59	ITC Avant Garde Book «Esc»(Symbol set«Esc»(s1p«size»v0s0b24607T	'ABCDEFGabcdefg0123456789&!.,'
60	ITC Avant Garde DemiBold «Esc»(Symbol set«Esc»(s1p«size»v0s2b24607T	'ABCDEFGabcdefg0123456789&!.,'
61	ITC Avant Garde Book Oblique «Esc»(Symbol set«Esc»(s1p«size»v1s0b24607T	'ABCDEFGabcdefg0123456789&!.,'
62	ITC Avant Garde DemiBold Oblique «Esc»(Symbol set«Esc»(s1p«size»v1s2b24607T	'ABCDEFGabcdefg0123456789&!.,'
63	ITC Bookman Light «Esc»(Symbol set«Esc»(s1p«size»v0s-3b24623T	'ABCDEFGabcdefg0123456789&!.,'
64	ITC Bookman DemiBold «Esc»(Symbol set«Esc»(s1p«size»v0s2b24623T	'ABCDEFGabcdefg0123456789&!.,'
65	ITC Bookman Light Italic «Esc»(Symbol set«Esc»(s1p«size»v1s-3b24623T	'ABCDEFGabcdefg0123456789&!.,'
66	ITC Bookman DemiBold Italic «Esc»(Symbol set«Esc»(s1p«size»v1s2b24623T	'ABCDEFGabcdefg0123456789&!.,'
67	New Century Schoolbook Roman «Esc»(Symbol set«Esc»(s1p«size»v0s0b24703T	'ABCDEFGabcdefg0123456789&!.,'
68	New Century Schoolbook Bold «Esc»(Symbol set«Esc»(s1p«size»v0s3b24703T	'ABCDEFGabcdefg0123456789&!.,'
69	New Century Schoolbook Italic «Esc»(Symbol set«Esc»(s1p«size»v1s0b24703T	'ABCDEFGabcdefg0123456789&!.,'
70	New Century Schoolbook Bold Ital «Esc»(Symbol set«Esc»(s1p«size»v1s3b24703T	'ABCDEFGabcdefg0123456789&!.,'
71	Times Roman «Esc»(Symbol set«Esc»(s1p«size»v0s0b25093T	'ABCDEFGabcdefg0123456789&!.,'
72	Times Roman Bold «Esc»(Symbol set«Esc»(s1p«size»v0s3b25093T	'ABCDEFGabcdefg0123456789&!.,'

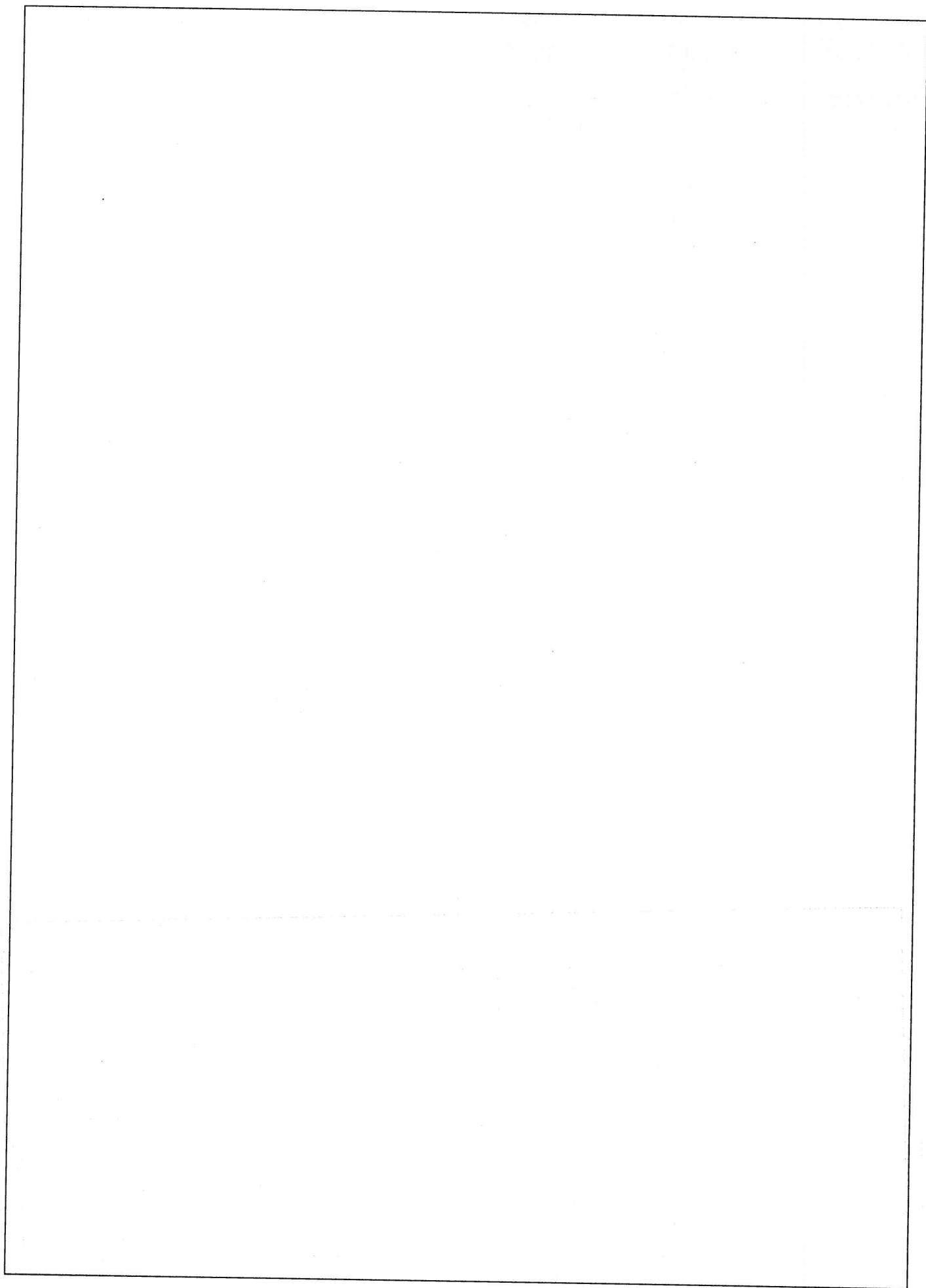
Osnovni fontovi

Položaj	Naziv fonta	Ispis uzorka
91	Courier PS Bold «Esc»(Symbol set«Esc»(s0p«pitch»h0s3b24579T	`ABCDEFGabcdefg0123456789&?!.,`
92	Courier PS Oblique «Esc»(Symbol set«Esc»(s0p«pitch»h1s0b24579T	'ABCDEFGabcdefg0123456789&?!.,'
93	Courier PS Bold Oblique «Esc»(Symbol set«Esc»(s0p«pitch»h1s3b24579T	`ABCDEFGabcdefg0123456789&?!.,`
94	Line Printer «Esc»(8U«Esc»(s0p16.67h8.48v0s0b0T	'ABCDEFGabcdefg0123456789&?!.,'

Popis PostScript fontova

Interni fontovi (nastavak):

GreekMono8859-7BoldItalic	ABCDEF <i>abcdefg</i> 0123456789 &?!\$.,
GreekMono8859-7Italic	<i>ABCDEF</i> <i>abcdefg</i> 0123456789 &?!\$.,
GreekSans737	ABCDEF <i>abcdefg</i> 0123456789 &?!\$.,
GreekSans737-Bold	ABCDEF <i>abcdefg</i> 0123456789 &?!\$.,
GreekSans737-BoldItalic	<i>ABCDEF</i> <i>abcdefg</i> 0123456789 &?!\$.,
GreekSans737-Italic	<i>ABCDEF</i> <i>abcdefg</i> 0123456789 &?!\$.,
GreekSans851	ABCDEF <i>abcdefg</i> 0123456789 &?!\$.,
GreekSans851-Bold	ABCDEF <i>abcdefg</i> 0123456789 &?!\$.,
GreekSans851-BoldItalic	<i>ABCDEF</i> <i>abcdefg</i> 0123456789 &?!\$.,
GreekSans851-Italic	<i>ABCDEF</i> <i>abcdefg</i> 0123456789 &?!\$.,
GreekSans8859-7	ABCDEF <i>abcdefg</i> 0123456789 &?!\$.,
GreekSans8859-7Bold	ABCDEF <i>abcdefg</i> 0123456789 &?!\$.,
GreekSans8859-7BoldItalic	<i>ABCDEF</i> <i>abcdefg</i> 0123456789 &?!\$.,
GreekSans8859-7Italic	<i>ABCDEF</i> <i>abcdefg</i> 0123456789 &?!\$.,
GreekSerif737	ABCDEF <i>abcdefg</i> 0123456789 &?!\$.,
GreekSerif737-Bold	ABCDEF <i>abcdefg</i> 0123456789 &?!\$.,
GreekSerif737-BoldItalic	<i>ABCDEF</i> <i>abcdefg</i> 0123456789 &?!\$.,
GreekSerif737-Italic	<i>ABCDEF</i> <i>abcdefg</i> 0123456789 &?!\$.,
GreekSerif851	ABCDEF <i>abcdefg</i> 0123456789 &?!\$.,
GreekSerif851-Bold	ABCDEF <i>abcdefg</i> 0123456789 &?!\$.,
GreekSerif851-BoldItalic	<i>ABCDEF</i> <i>abcdefg</i> 0123456789 &?!\$.,
GreekSerif851-Italic	<i>ABCDEF</i> <i>abcdefg</i> 0123456789 &?!\$.,
GreekSerif8859-7	ABCDEF <i>abcdefg</i> 0123456789 &?!\$.,
GreekSerif8859-7Bold	ABCDEF <i>abcdefg</i> 0123456789 &?!\$.,
GreekSerif8859-7BoldItalic	<i>ABCDEF</i> <i>abcdefg</i> 0123456789 &?!\$.,
GreekSerif8859-7Italic	<i>ABCDEF</i> <i>abcdefg</i> 0123456789 &?!\$.,
Helvetica	ABCDEF <i>abcdefg</i> 0123456789 &?!\$.,€
Helvetica-Bold	ABCDEF <i>abcdefg</i> 0123456789 &?!\$.,€
Helvetica-BoldOblique	<i>ABCDEF</i> <i>abcdefg</i> 0123456789 &?!\$.,€
Helvetica-Condensed	ABCDEF <i>abcdefg</i> 0123456789 &?!\$.,€
Helvetica-Condensed-Bold	ABCDEF <i>abcdefg</i> 0123456789 &?!\$.,€
Helvetica-Condensed-BoldOblique	<i>ABCDEF</i> <i>abcdefg</i> 0123456789 &?!\$.,€
Helvetica-Condensed-Oblique	<i>ABCDEF</i> <i>abcdefg</i> 0123456789 &?!\$.,€
Helvetica-Narrow	ABCDEF <i>abcdefg</i> 0123456789 &?!\$.,€
Helvetica-Narrow-Bold	ABCDEF <i>abcdefg</i> 0123456789 &?!\$.,€
Helvetica-Narrow-BoldOblique	<i>ABCDEF</i> <i>abcdefg</i> 0123456789 &?!\$.,€
Helvetica-Narrow-Oblique	<i>ABCDEF</i> <i>abcdefg</i> 0123456789 &?!\$.,€
Helvetica-Oblique	<i>ABCDEF</i> <i>abcdefg</i> 0123456789 &?!\$.,€
HoeflerText-Black	ABCDEF <i>abcdefg</i> 0123456789 &?!\$.,€
HoeflerText-BlackItalic	<i>ABCDEF</i> <i>abcdefg</i> 0123456789 &?!\$.,€
HoeflerText-Italic	<i>ABCDEF</i> <i>abcdefg</i> 0123456789 &?!\$.,€
HoeflerText-Ornaments	 — ❌
HoeflerText-Regular	ABCDEF <i>abcdefg</i> 0123456789 &?!\$.,€
JoannaMT	ABCDEF <i>abcdefg</i> 0123456789 &?!\$.,€
JoannaMT-Bold	ABCDEF <i>abcdefg</i> 0123456789 &?!\$.,€
JoannaMT-BoldItalic	<i>ABCDEF</i> <i>abcdefg</i> 0123456789 &?!\$.,€
JoannaMT-Italic	<i>ABCDEF</i> <i>abcdefg</i> 0123456789 &?!\$.,€
LetterGothic	ABCDEF <i>abcdefg</i> 0123456789 &?!\$.,€
LetterGothic-Bold	ABCDEF <i>abcdefg</i> 0123456789 &?!\$.,€
LetterGothic-BoldSlanted	<i>ABCDEF</i> <i>abcdefg</i> 0123456789 &?!\$.,€
LetterGothic-Slanted	<i>ABCDEF</i> <i>abcdefg</i> 0123456789 &?!\$.,€
LubalinGraph-Book	ABCDEF <i>abcdefg</i> 0123456789 &?!\$.,€
LubalinGraph-BookOblique	<i>ABCDEF</i> <i>abcdefg</i> 0123456789 &?!\$.,€
LubalinGraph-Demi	ABCDEF <i>abcdefg</i> 0123456789 &?!\$.,€
LubalinGraph-DemiOblique	<i>ABCDEF</i> <i>abcdefg</i> 0123456789 &?!\$.,€
Marigold	ABCDEF <i>abcdefg</i> 0123456789 &?!\$.,€
Monalisa-Recut	ABCDEF <i>abcdefg</i> 0123456789 &?!\$.,€
Monaco	ABCDEF <i>abcdefg</i> 0123456789 &?!\$.,€
NewCenturySchlbk-Bold	ABCDEF <i>abcdefg</i> 0123456789 &?!\$.,€
NewCenturySchlbk-BoldItalic	<i>ABCDEF</i> <i>abcdefg</i> 0123456789 &?!\$.,€
NewCenturySchlbk-Italic	<i>ABCDEF</i> <i>abcdefg</i> 0123456789 &?!\$.,€
NewCenturySchlbk-Roman	ABCDEF <i>abcdefg</i> 0123456789 &?!\$.,€
NewYork	ABCDEF <i>abcdefg</i> 0123456789 &?!\$.,€
Optima	ABCDEF <i>abcdefg</i> 0123456789 &?!\$.,€
Optima-Bold	ABCDEF <i>abcdefg</i> 0123456789 &?!\$.,€
Optima-BoldItalic	<i>ABCDEF</i> <i>abcdefg</i> 0123456789 &?!\$.,€
Optima-Italic	<i>ABCDEF</i> <i>abcdefg</i> 0123456789 &?!\$.,€
Oxford	ABCDEF <i>abcdefg</i> 0123456789 &?!\$.,€
Palatino-Bold	ABCDEF <i>abcdefg</i> 0123456789 &?!\$.,€



Lista de fuentes PCL5, Página 1

Fuentes residentes

Posición	Nombre de la fuente	Muestra de impresión
1	Courier «Esc»(Symbol set«Esc»(s0p«pitch»h0s0b4099T	'ABCDEFGFGabcdefg0123456789&?!.,'
2	CG Times «Esc»(Symbol set«Esc»(s1p«size»v0s0b4101T	'ABCDEFGFGabcdefg0123456789&?!.,'
3	CG Times Bold «Esc»(Symbol set«Esc»(s1p«size»v0s3b4101T	'ABCDEFGFGabcdefg0123456789&?!.,'
4	CG Times Italic «Esc»(Symbol set«Esc»(s1p«size»v1s0b4101T	' <i>ABCDEFGFGabcdefg0123456789&?!.,'</i>
5	CG Times Bold Italic «Esc»(Symbol set«Esc»(s1p«size»v1s3b4101T	' <i>ABCDEFGFGabcdefg0123456789&?!.,'</i>
6	CG Omega «Esc»(Symbol set«Esc»(s1p«size»v0s0b4113T	'ABCDEFGFGabcdefg0123456789&?!.,'
7	CG Omega Bold «Esc»(Symbol set«Esc»(s1p«size»v0s3b4113T	' ABCDEFGFGabcdefg0123456789&?!.,'
8	CG Omega Italic «Esc»(Symbol set«Esc»(s1p«size»v1s0b4113T	' <i>ABCDEFGFGabcdefg0123456789&?!.,'</i>
9	CG Omega Bold Italic «Esc»(Symbol set«Esc»(s1p«size»v1s3b4113T	' <i>ABCDEFGFGabcdefg0123456789&?!.,'</i>
10	Coronet «Esc»(Symbol set«Esc»(s1p«size»v1s0b4116T	' <i>ABCDEFGFGabcdefg0123456789&?!.,'</i>
11	Clarendon Condensed «Esc»(Symbol set«Esc»(s1p«size»v4s3b4140T	' ABCDEFGFGabcdefg0123456789&?!.,'
12	Univers Medium «Esc»(Symbol set«Esc»(s1p«size»v0s0b4148T	'ABCDEFGFGabcdefg0123456789&?!.,'
13	Univers Bold «Esc»(Symbol set«Esc»(s1p«size»v0s3b4148T	' ABCDEFGFGabcdefg0123456789&?!.,'
14	Univers Medium Italic «Esc»(Symbol set«Esc»(s1p«size»v1s0b4148T	' <i>ABCDEFGFGabcdefg0123456789&?!.,'</i>
15	Univers Bold Italic «Esc»(Symbol set«Esc»(s1p«size»v1s3b4148T	' <i>ABCDEFGFGabcdefg0123456789&?!.,'</i>
16	Univers Medium Condensed «Esc»(Symbol set«Esc»(s1p«size»v4s0b4148T	' ABCDEFGFGabcdefg0123456789&?!.,'
17	Univers Bold Condensed «Esc»(Symbol set«Esc»(s1p«size»v4s3b4148T	' ABCDEFGFGabcdefg0123456789&?!.,'
18	Univers Medium Condensed Italic «Esc»(Symbol set«Esc»(s1p«size»v5s0b4148T	' <i>ABCDEFGFGabcdefg0123456789&?!.,'</i>

Fuentes residentes

Posición	Nombre de la fuente	Muestra de impresión
19	Univers Bold Condensed Italic «Esc»(Symbol set«Esc»(s1p«size»v5s3b4148T	' ABCDEFGGabcdefg0123456789&?!.,'
20	Antique Olive «Esc»(Symbol set«Esc»(s1p«size»v0s0b4168T	'ABCDEFGabcdefg0123456789&?!.,'
21	Antique Olive Bold «Esc»(Symbol set«Esc»(s1p«size»v0s3b4168T	' ABCDEFGGabcdefg0123456789&?!.,'
22	Antique Olive Italic «Esc»(Symbol set«Esc»(s1p«size»v1s0b4168T	' <i>ABCDEFGGabcdefg0123456789&?!.,'</i>
23	Garamond Antiqua «Esc»(Symbol set«Esc»(s1p«size»v0s0b4197T	'ABCDEFGabcdefg0123456789&?!.,'
24	Garamond Halbfett «Esc»(Symbol set«Esc»(s1p«size»v0s3b4197T	' ABCDEFGGabcdefg0123456789&?!.,'
25	Garamond Kursiv «Esc»(Symbol set«Esc»(s1p«size»v1s0b4197T	' <i>ABCDEFGGabcdefg0123456789&?!.,'</i>
26	Garamond Kursiv Halbfett «Esc»(Symbol set«Esc»(s1p«size»v1s3b4197T	' <i>ABCDEFGGabcdefg0123456789&?!.,'</i>
27	Marigold «Esc»(Symbol set«Esc»(s1p«size»v0s0b4297T	' <i>ABCDEFGGabcdefg0123456789&?!.,'</i>
28	Albertus Medium «Esc»(Symbol set«Esc»(s1p«size»v0s1b4362T	' ABCDEFGGabcdefg0123456789&?!.,'
29	Albertus Extra Bold «Esc»(Symbol set«Esc»(s1p«size»v0s4b4362T	' ABCDEFGGabcdefg0123456789&?!.,'
30	Ryadh «Esc»(Symbol set«Esc»(s1p«size»v0s0b4859T	ABCDEFGabcdefg0123456789&?!.,
31	Ryadh Bold «Esc»(Symbol set«Esc»(s1p«size»v0s3b4859T	ABCDEFGabcdefg0123456789&?!.,
32	Malka «Esc»(Symbol set«Esc»(s1p«size»v0s0b16584T	ABCDEFGabcdefg0123456789&?!.,'
33	Malka Bold «Esc»(Symbol set«Esc»(s1p«size»v0s3b16584T	ABCDEFGabcdefg0123456789&?!.,'
34	Malka Italic «Esc»(Symbol set«Esc»(s1p«size»v1s0b16584T	<i>ABCDEFGabcdefg0123456789&?!.,'</i>
35	Dorit «Esc»(Symbol set«Esc»(s1p«size»v0s0b16585T	ABCDEFGabcdefg0123456789&?!.,'
36	Dorit Bold «Esc»(Symbol set«Esc»(s1p«size»v0s3b16585T	ABCDEFGabcdefg0123456789&?!.,'

Lista de fuentes PCL5, Página 3

Fuentes residentes

Posición	Nombre de la fuente	Muestra de impresión
37	Naamit «Esc»(Symbol set«Esc»(s1p«size»v0s0b16587T	ABCDEFGabcdefg0123456789&?!.,'
38	Naamit Bold «Esc»(Symbol set«Esc»(s1p«size»v0s3b16587T	ABCDEFGabcdefg0123456789&?!.,'
39	Arial «Esc»(Symbol set«Esc»(s1p«size»v0s0b16602T	'ABCDEFGabcdefg0123456789&?!.,'
40	Arial Bold «Esc»(Symbol set«Esc»(s1p«size»v0s3b16602T	'ABCDEFGabcdefg0123456789&?!.,'
41	Arial Italic «Esc»(Symbol set«Esc»(s1p«size»v1s0b16602T	' <i>ABCDEFGabcdefg0123456789&?!.,'</i>
42	Arial Bold Italic «Esc»(Symbol set«Esc»(s1p«size»v1s3b16602T	'<i>ABCDEFGabcdefg0123456789&?!.,'</i>
43	Times New Roman «Esc»(Symbol set«Esc»(s1p«size»v0s0b16901T	'ABCDEFGabcdefg0123456789&?!.,'
44	Times New Roman Bold «Esc»(Symbol set«Esc»(s1p«size»v0s3b16901T	'ABCDEFGabcdefg0123456789&?!.,'
45	Times New Roman Italic «Esc»(Symbol set«Esc»(s1p«size»v1s0b16901T	' <i>ABCDEFGabcdefg0123456789&?!.,'</i>
46	Times New Roman Bold Italic «Esc»(Symbol set«Esc»(s1p«size»v1s3b16901T	'<i>ABCDEFGabcdefg0123456789&?!.,'</i>
47	Helvetica «Esc»(Symbol set«Esc»(s1p«size»v0s0b24580T	'ABCDEFGabcdefg0123456789&?!.,'
48	Helvetica Bold «Esc»(Symbol set«Esc»(s1p«size»v0s3b24580T	'ABCDEFGabcdefg0123456789&?!.,'
49	Helvetica Oblique «Esc»(Symbol set«Esc»(s1p«size»v1s0b24580T	' <i>ABCDEFGabcdefg0123456789&?!.,'</i>
50	Helvetica Bold Oblique «Esc»(Symbol set«Esc»(s1p«size»v1s3b24580T	'<i>ABCDEFGabcdefg0123456789&?!.,'</i>
51	Helvetica Narrow «Esc»(Symbol set«Esc»(s1p«size»v4s0b24580T	'ABCDEFGabcdefg0123456789&?!.,'
52	Helvetica Narrow Bold «Esc»(Symbol set«Esc»(s1p«size»v4s3b24580T	'ABCDEFGabcdefg0123456789&?!.,'
53	Helvetica Narrow Oblique «Esc»(Symbol set«Esc»(s1p«size»v5s0b24580T	' <i>ABCDEFGabcdefg0123456789&?!.,'</i>
54	Helvetica Narrow Bold Oblique «Esc»(Symbol set«Esc»(s1p«size»v5s3b24580T	'<i>ABCDEFGabcdefg0123456789&?!.,'</i>

Fuentes residentes

Posición	Nombre de la fuente	Muestra de impresión
55	Palatino Roman «Esc»(Symbol set«Esc»(s1p«size»v0s0b24591T	'ABCDEFGabcdefg0123456789&?!.,'
56	Palatino Bold «Esc»(Symbol set«Esc»(s1p«size»v0s3b24591T	'ABCDEFGabcdefg0123456789&?!.,'
57	Palatino Italic «Esc»(Symbol set«Esc»(s1p«size»v1s0b24591T	'ABCDEFGabcdefg0123456789&?!.,'
58	Palatino Bold Italic «Esc»(Symbol set«Esc»(s1p«size»v1s3b24591T	'ABCDEFGabcdefg0123456789&?!.,'
59	ITC Avant Garde Book «Esc»(Symbol set«Esc»(s1p«size»v0s0b24607T	'ABCDEFGabcdefg0123456789&?!.,'
60	ITC Avant Garde DemiBold «Esc»(Symbol set«Esc»(s1p«size»v0s2b24607T	'ABCDEFGabcdefg0123456789&?!.,'
61	ITC Avant Garde Book Oblique «Esc»(Symbol set«Esc»(s1p«size»v1s0b24607T	'ABCDEFGabcdefg0123456789&?!.,'
62	ITC Avant Garde DemiBold Oblique «Esc»(Symbol set«Esc»(s1p«size»v1s2b24607T	'ABCDEFGabcdefg0123456789&?!.,'
63	ITC Bookman Light «Esc»(Symbol set«Esc»(s1p«size»v0s-3b24623T	'ABCDEFGabcdefg0123456789&?!.,'
64	ITC Bookman DemiBold «Esc»(Symbol set«Esc»(s1p«size»v0s2b24623T	'ABCDEFGabcdefg0123456789&?!.,'
65	ITC Bookman Light Italic «Esc»(Symbol set«Esc»(s1p«size»v1s-3b24623T	'ABCDEFGabcdefg0123456789&?!.,'
66	ITC Bookman DemiBold Italic «Esc»(Symbol set«Esc»(s1p«size»v1s2b24623T	'ABCDEFGabcdefg0123456789&?!.,'
67	New Century Schoolbook Roman «Esc»(Symbol set«Esc»(s1p«size»v0s0b24703T	'ABCDEFGabcdefg0123456789&?!.,'
68	New Century Schoolbook Bold «Esc»(Symbol set«Esc»(s1p«size»v0s3b24703T	'ABCDEFGabcdefg0123456789&?!.,'
69	New Century Schoolbook Italic «Esc»(Symbol set«Esc»(s1p«size»v1s0b24703T	'ABCDEFGabcdefg0123456789&?!.,'
70	New Century Schoolbook Bold Ital «Esc»(Symbol set«Esc»(s1p«size»v1s3b24703T	'ABCDEFGabcdefg0123456789&?!.,'
71	Times Roman «Esc»(Symbol set«Esc»(s1p«size»v0s0b25093T	'ABCDEFGabcdefg0123456789&?!.,'
72	Times Roman Bold «Esc»(Symbol set«Esc»(s1p«size»v0s3b25093T	'ABCDEFGabcdefg0123456789&?!.,'

Fuentes residentes

Posición	Nombre de la fuente	Muestra de impresión
91	Courier PS Bold «Esc»(Symbol set«Esc»(sOp«pitch»h0s3b24579T	' ABCDEFGGabcdefg0123456789&?!.,'
92	Courier PS Oblique «Esc»(Symbol set«Esc»(sOp«pitch»h1s0b24579T	' <i>ABCDEFGGabcdefg0123456789&?!.,'</i>
93	Courier PS Bold Oblique «Esc»(Symbol set«Esc»(sOp«pitch»h1s3b24579T	' <i>ABCDEFGGabcdefg0123456789&?!.,'</i>
94	Line Printer «Esc»(8U«Esc»(sOp16.67h8.48v0s0b0T	' ABCDEFGGabcdefg0123456789&?!.,'

Lista de fuentes PostScript

Fuentes internas:

AlbertusMT	ABCDEFG abcdefg 0123456789 &?!\$.,€
AlbertusMT-Italic	<i>ABCDEFG abcdefg 0123456789 &?!\$.,€</i>
AlbertusMT-Light	ABCDEFG abcdefg 0123456789 &?!\$.,€
AntiqueOlive-Bold	ABCDEFG abcdefg 0123456789 &?!\$.,€
AntiqueOlive-Compact	ABCDEFG abcdefg 0123456789 &?!\$.,€
AntiqueOlive-Italic	<i>ABCDEFG abcdefg 0123456789 &?!\$.,€</i>
AntiqueOlive-Roman	ABCDEFG abcdefg 0123456789 &?!\$.,€
Apple-Chancery	<i>ABCDEFG abcdefg 0123456789 &?!\$.,€</i>
Arial-BoldItalicMT	ABCDEFG abcdefg 0123456789 &?!\$.,€
Arial-BoldMT	ABCDEFG abcdefg 0123456789 &?!\$.,€
Arial-ItalicMT	<i>ABCDEFG abcdefg 0123456789 &?!\$.,€</i>
ArialMT	ABCDEFG abcdefg 0123456789 &?!\$.,€
AvantGarde-Book	ABCDEFG abcdefg 0123456789 &?!\$.,€
AvantGarde-BookOblique	<i>ABCDEFG abcdefg 0123456789 &?!\$.,€</i>
AvantGarde-Demi	ABCDEFG abcdefg 0123456789 &?!\$.,€
AvantGarde-DemiOblique	ABCDEFG abcdefg 0123456789 &?!\$.,€
Bodoni	ABCDEFG abcdefg 0123456789 &?!\$.,€
Bodoni-Bold	ABCDEFG abcdefg 0123456789 &?!\$.,€
Bodoni-BoldItalic	ABCDEFG abcdefg 0123456789 &?!\$.,€
Bodoni-Italic	<i>ABCDEFG abcdefg 0123456789 &?!\$.,€</i>
Bodoni-Poster	ABCDEFG abcdefg 0123456789 &?!\$.,€
Bodoni-PosterCompressed	ABCDEFG abcdefg 0123456789 &?!\$.,€
Bookman-Demi	ABCDEFG abcdefg 0123456789 &?!\$.,€
Bookman-DemiItalic	ABCDEFG abcdefg 0123456789 &?!\$.,€
Bookman-Light	ABCDEFG abcdefg 0123456789 &?!\$.,€
Bookman-LightItalic	<i>ABCDEFG abcdefg 0123456789 &?!\$.,€</i>
Carta	*↓↑▲☆✱✱ ✱↓↑⊕★✱↑ 0123456789 ✱☉☉☉☉
Chicago	ABCDEFG abcdefg 0123456789 &?!\$.,€
Clarendon	ABCDEFG abcdefg 0123456789 &?!\$.,€
Clarendon-Bold	ABCDEFG abcdefg 0123456789 &?!\$.,€
Clarendon-Light	ABCDEFG abcdefg 0123456789 &?!\$.,€
CooperBlack	ABCDEFG abcdefg 0123456789 &?!\$.,€
CooperBlack-Italic	ABCDEFG abcdefg 0123456789 &?!\$.,€
Copperplate-ThirtyThreeBC	ABCDEFG ABCDEFG 0123456789 &?!\$.,€
Copperplate-ThirtyTwoBC	ABCDEFG ABCDEFG 0123456789 &?!\$.,€
Coronet-Regular	<i>ABCDEFG abcdefg 0123456789 &?!\$.,€</i>
Courier	ABCDEFG abcdefg 0123456789 &?!\$.,€
Courier-Bold	ABCDEFG abcdefg 0123456789 &?!\$.,€
Courier-BoldOblique	ABCDEFG abcdefg 0123456789 &?!\$.,€
Courier-Oblique	<i>ABCDEFG abcdefg 0123456789 &?!\$.,€</i>
Eurostile	ABCDEFG abcdefg 0123456789 &?!\$.,€
Eurostile-Bold	ABCDEFG abcdefg 0123456789 &?!\$.,€
Eurostile-BoldExtendedTwo	ABCDEFG abcdefg 0123456789 &?!\$.,€
Eurostile-ExtendedTwo	ABCDEFG abcdefg 0123456789 &?!\$.,€
Geneva	ABCDEFG abcdefg 0123456789 &?!\$.,€
GillSans	ABCDEFG abcdefg 0123456789 &?!\$.,€
GillSans-Bold	ABCDEFG abcdefg 0123456789 &?!\$.,€
GillSans-BoldCondensed	ABCDEFG abcdefg 0123456789 &?!\$.,€
GillSans-BoldItalic	ABCDEFG abcdefg 0123456789 &?!\$.,€
GillSans-Condensed	ABCDEFG abcdefg 0123456789 &?!\$.,€
GillSans-ExtraBold	ABCDEFG abcdefg 0123456789 &?!\$.,€
GillSans-Italic	<i>ABCDEFG abcdefg 0123456789 &?!\$.,€</i>
GillSans-Light	ABCDEFG abcdefg 0123456789 &?!\$.,€
GillSans-LightItalic	<i>ABCDEFG abcdefg 0123456789 &?!\$.,€</i>
Goudy	ABCDEFG abcdefg 0123456789 &?!\$.,€
Goudy-Bold	ABCDEFG abcdefg 0123456789 &?!\$.,€
Goudy-BoldItalic	ABCDEFG abcdefg 0123456789 &?!\$.,€
Goudy-ExtraBold	ABCDEFG abcdefg 0123456789 &?!\$.,€
Goudy-Italic	<i>ABCDEFG abcdefg 0123456789 &?!\$.,€</i>
GreekMono737	ABCDEFG abcdefg 0123456789 &?!\$.,€
GreekMono737-Bold	ABCDEFG abcdefg 0123456789 &?!\$.,€
GreekMono737-BoldItalic	ABCDEFG abcdefg 0123456789 &?!\$.,€
GreekMono737-Italic	<i>ABCDEFG abcdefg 0123456789 &?!\$.,€</i>
GreekMono851	ABCDEFG abcdefg 0123456789 &?!\$.,€
GreekMono851-Bold	ABCDEFG abcdefg 0123456789 &?!\$.,€
GreekMono851-BoldItalic	ABCDEFG abcdefg 0123456789 &?!\$.,€
GreekMono851-Italic	<i>ABCDEFG abcdefg 0123456789 &?!\$.,€</i>
GreekMono8859-7	ABCDEFG abcdefg 0123456789 &?!\$.,€
GreekMono8859-7Bold	ABCDEFG abcdefg 0123456789 &?!\$.,€

Impreso: Abr 24, 2025, 11:43:32

©2017-2019 Xerox Corporation. Reservados todos los derechos.

Xerox® y VersaLink® son marcas comerciales de Xerox Corporation en los Estados Unidos y/o en otros países.

Lista de fuentes PostScript

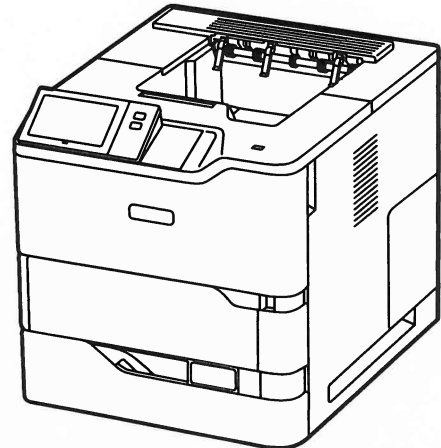
Fuentes internas (continuación):

Palatino-BoldItalic	<i>ABCDEFG abcdefg 0123456789 &?!\$,%</i>
Palatino-Italic	<i>ABCDEFG abcdefg 0123456789 &?!\$,%</i>
Palatino-Roman	ABCDEFG abcdefg 0123456789 &?!\$,%
StempelGaramond-Bold	ABCDEFG abcdefg 0123456789 &?!\$,%
StempelGaramond-BoldItalic	<i>ABCDEFG abcdefg 0123456789 &?!\$,%</i>
StempelGaramond-Italic	<i>ABCDEFG abcdefg 0123456789 &?!\$,%</i>
StempelGaramond-Roman	ABCDEFG abcdefg 0123456789 &?!\$,%
Symbol	ABXΔEΦΓ αβχδεφγ 0123456789 &?!\$,%
Tekton	ABCDEFG abcdefg 0123456789 &?!\$,%
Times-Bold	ABCDEFG abcdefg 0123456789 &?!\$,%
Times-BoldItalic	<i>ABCDEFG abcdefg 0123456789 &?!\$,%</i>
Times-Italic	<i>ABCDEFG abcdefg 0123456789 &?!\$,%</i>
Times-Roman	ABCDEFG abcdefg 0123456789 &?!\$,%
TimesNewRomanPS-BoldItalicMT	<i>ABCDEFG abcdefg 0123456789 &?!\$,%</i>
TimesNewRomanPS-BoldMT	ABCDEFG abcdefg 0123456789 &?!\$,%
TimesNewRomanPS-ItalicMT	<i>ABCDEFG abcdefg 0123456789 &?!\$,%</i>
TimesNewRomanPSMT	ABCDEFG abcdefg 0123456789 &?!\$,%
Univers	ABCDEFG abcdefg 0123456789 &?!\$,%
Univers-Bold	ABCDEFG abcdefg 0123456789 &?!\$,%
Univers-BoldExt	ABCDEFG abcdefg 0123456789 &?!\$,%
Univers-BoldExtObl	<i>ABCDEFG abcdefg 0123456789 &?!\$,%</i>
Univers-BoldOblique	<i>ABCDEFG abcdefg 0123456789 &?!\$,%</i>
Univers-Condensed	ABCDEFG abcdefg 0123456789 &?!\$,%
Univers-CondensedBold	ABCDEFG abcdefg 0123456789 &?!\$,%
Univers-CondensedBoldOblique	<i>ABCDEFG abcdefg 0123456789 &?!\$,%</i>
Univers-CondensedOblique	<i>ABCDEFG abcdefg 0123456789 &?!\$,%</i>
Univers-Extended	ABCDEFG abcdefg 0123456789 &?!\$,%
Univers-ExtendedObl	<i>ABCDEFG abcdefg 0123456789 &?!\$,%</i>
Univers-Light	ABCDEFG abcdefg 0123456789 &?!\$,%
Univers-LightOblique	<i>ABCDEFG abcdefg 0123456789 &?!\$,%</i>
Univers-Oblique	<i>ABCDEFG abcdefg 0123456789 &?!\$,%</i>
Wingdings	Ⓐ Ⓑ Ⓒ Ⓓ Ⓔ Ⓕ Ⓖ Ⓗ Ⓘ Ⓚ Ⓛ Ⓜ Ⓝ Ⓟ Ⓠ Ⓡ Ⓢ Ⓣ Ⓤ Ⓥ Ⓦ Ⓧ Ⓨ Ⓩ ⓐ ⓑ ⓓ ⓔ ⓖ ⓗ ⓙ ⓚ ⓛ ⓞ ⓟ ⓠ ⓡ ⓢ ⓣ ⓤ ⓥ ⓦ ⓧ ⓨ ⓩ ⓪ ⓫ ⓬ ⓭ ⓮ ⓯ ⓰ ⓱ ⓲ ⓳ ⓴ ⓵ ⓶ ⓷ ⓸ ⓹ ⓺ ⓻ ⓼ ⓽ ⓾ ⓿
Wingdings-Regular	Ⓐ Ⓑ Ⓒ Ⓓ Ⓔ Ⓕ Ⓖ Ⓗ Ⓘ Ⓚ Ⓛ Ⓜ Ⓝ Ⓟ Ⓠ Ⓡ Ⓢ Ⓣ Ⓤ Ⓥ Ⓦ Ⓧ Ⓨ Ⓩ ⓐ ⓑ ⓓ ⓔ ⓖ ⓗ ⓙ ⓚ ⓛ ⓞ ⓟ ⓠ ⓡ ⓢ ⓣ ⓤ ⓥ ⓦ ⓧ ⓨ ⓩ ⓪ ⓫ ⓬ ⓭ ⓮ ⓯ ⓰ ⓱ ⓲ ⓳ ⓴ ⓵ ⓶ ⓷ ⓸ ⓹ ⓺ ⓻ ⓼ ⓽ ⓾ ⓿
ZapfChancery-MediumItalic	<i>ABCDEFJG abcdefg 0123456789 &?!\$,%</i>
ZapfDingbats	⌘ ⌚ ⌛ ⌜ ⌝ ⌞ ⌟ ⌠ ⌡ ⌢ ⌣ ⌤ ⌥ ⌦ ⌧ ⌨ 〈 〉 ⌫ ⌬ ⌭ ⌮ ⌯ ⌰ ⌱ ⌲ ⌳ ⌴ ⌵ ⌶ ⌷ ⌸ ⌹ ⌺ ⌻ ⌼ ⌽ ⌾ ⌿





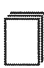
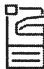
Xerox® VersaLink® B620 Printer

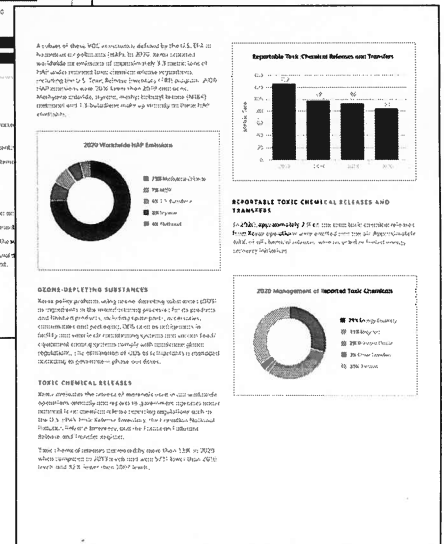
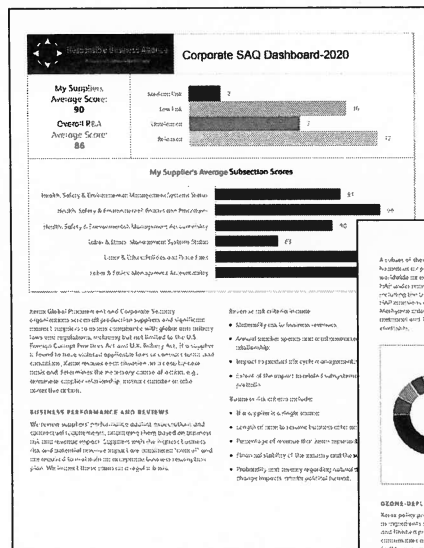
Configurable, connected, and highly capable.

The VersaLink® B620 Printer gives you the freedom to work where and how you want. Loaded with features designed to increase productivity, this highly configurable, cloud-connected workplace assistant delivers completely new capabilities that go far beyond the competition. You can count on the B620 to make your business more efficient.



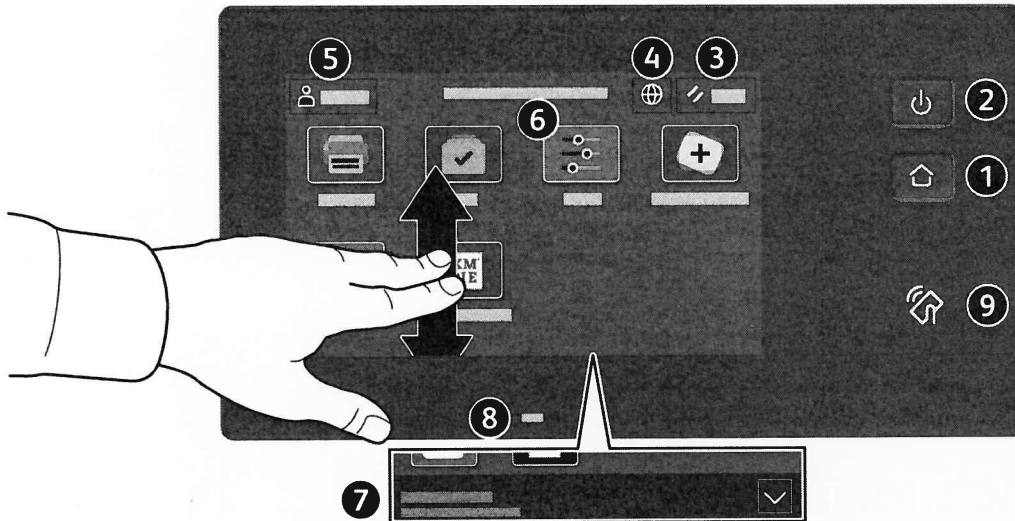
PRINT, CLOUD

-  65 ppm Letter
61 ppm A4
-  Solutions
-  Cloud connectivity
-  1200 x 1200 dpi
-  Up to 3,850 pages
-  Optional: 3 additional paper trays



Tauler de control

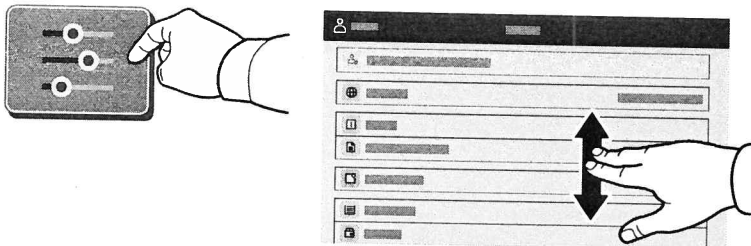
Les aplicacions disponibles poden variar segons la configuració de la impressora. Per obtenir més informació sobre les aplicacions i les funcions, consulteu el *Manual d'usuari*.



- 1 **Pàgina inicial** torna a la pantalla de l'aplicació principal.
- 2 **Alimentació/Reactivació** inicia la impressora o proporciona opcions per reiniciar-la, apagar-la o iniciar el mode de suspensió.
- 3 **Reinicia** restableix els valors predefinitos de les opcions de les aplicacions.
- 4 **Idioma** proporciona opcions d'idioma de la pantalla.
- 5 **Inicia la sessió** proporciona accés especial a les eines i a les opcions.
- 6 **L'aplicació Dispositiu** proporciona accés a la informació i la configuració de la impressora.
- 7 **El bàner de notificació** mostra els avisos i l'estat de la impressora. Per mostrar totes les notificacions, toqueu el bàner. Per tancar el bàner, toqueu la fletxa avall.
- 8 **El LED d'estat** indica l'estat de la impressora. Per obtenir informació detallada, consulteu el *Manual d'usuari*.
- 9 **L'àrea d'NFC** permet realitzar l'aparellament amb dispositius mòbils per imprimir mitjançant una aplicació.

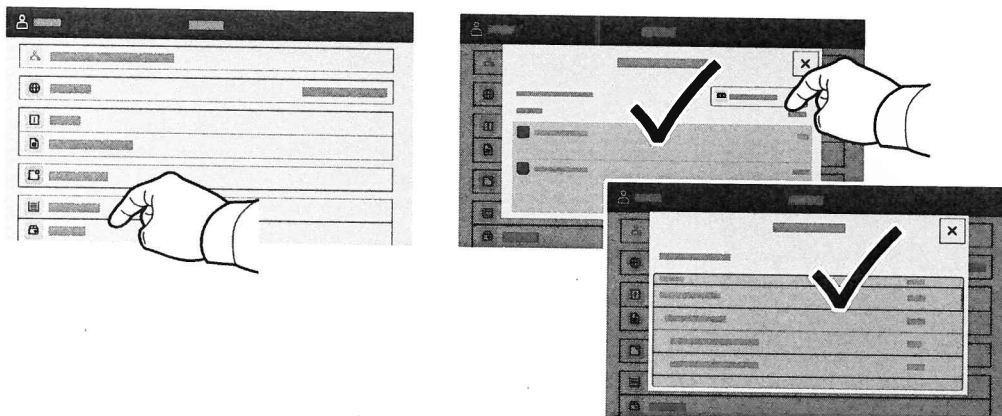
Aplicació Dispositiu

L'aplicació Dispositiu proporciona accés a dades d'estat dels subministraments, a la informació de la impressora i a la configuració del dispositiu. Per accedir a determinats menús i configuracions, iniciu una sessió mitjançant el nom i la contrasenya de l'administrador.



Informació de facturació i ús

Al menú de funcions Dispositiu, per visualitzar recomptes bàsics d'impressió, toqueu **Facturació/Ús**. Per visualitzar recomptes detallats d'ús, toqueu **Computadors d'ús**. La llista proporciona categories de recomptes detallats d'impressió.

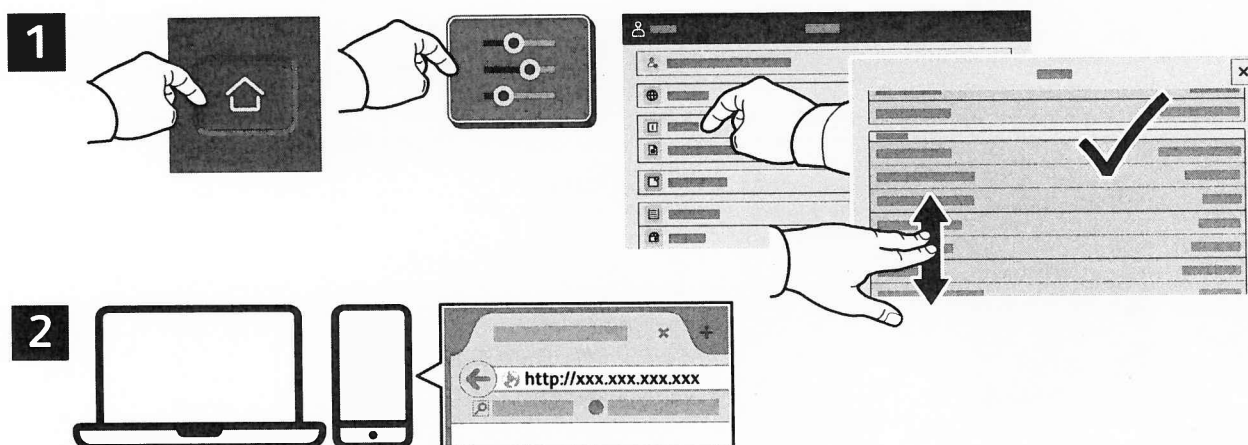


Servidor web incorporat

El servidor web incorporat de Xerox® permet accedir a informació de configuració de la impressora, d'estat dels subministraments, del paper i dels treballs, i a funcions de diagnòstics en xarxa.

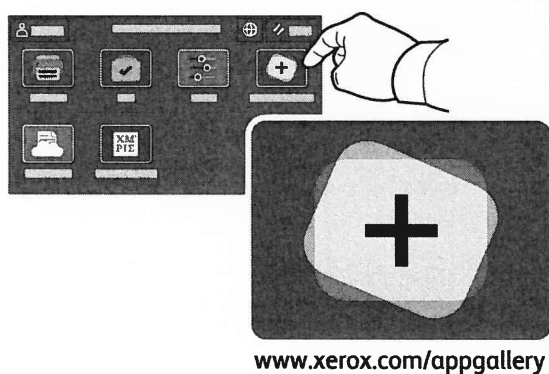
Per connectar-vos, en un navegador web, introduïu l'adreça IP de la impressora. L'adreça IPv4 de la xarxa està disponible a la pantalla tàctil del tauler de control. Toqueu l'aplicació **Dispositiu** > **Quant a i**, a continuació, desplaceu-vos cap avall.

Per obtenir informació sobre el servidor web incorporat, consulteu el *Manual d'usuari* a Xerox.com.



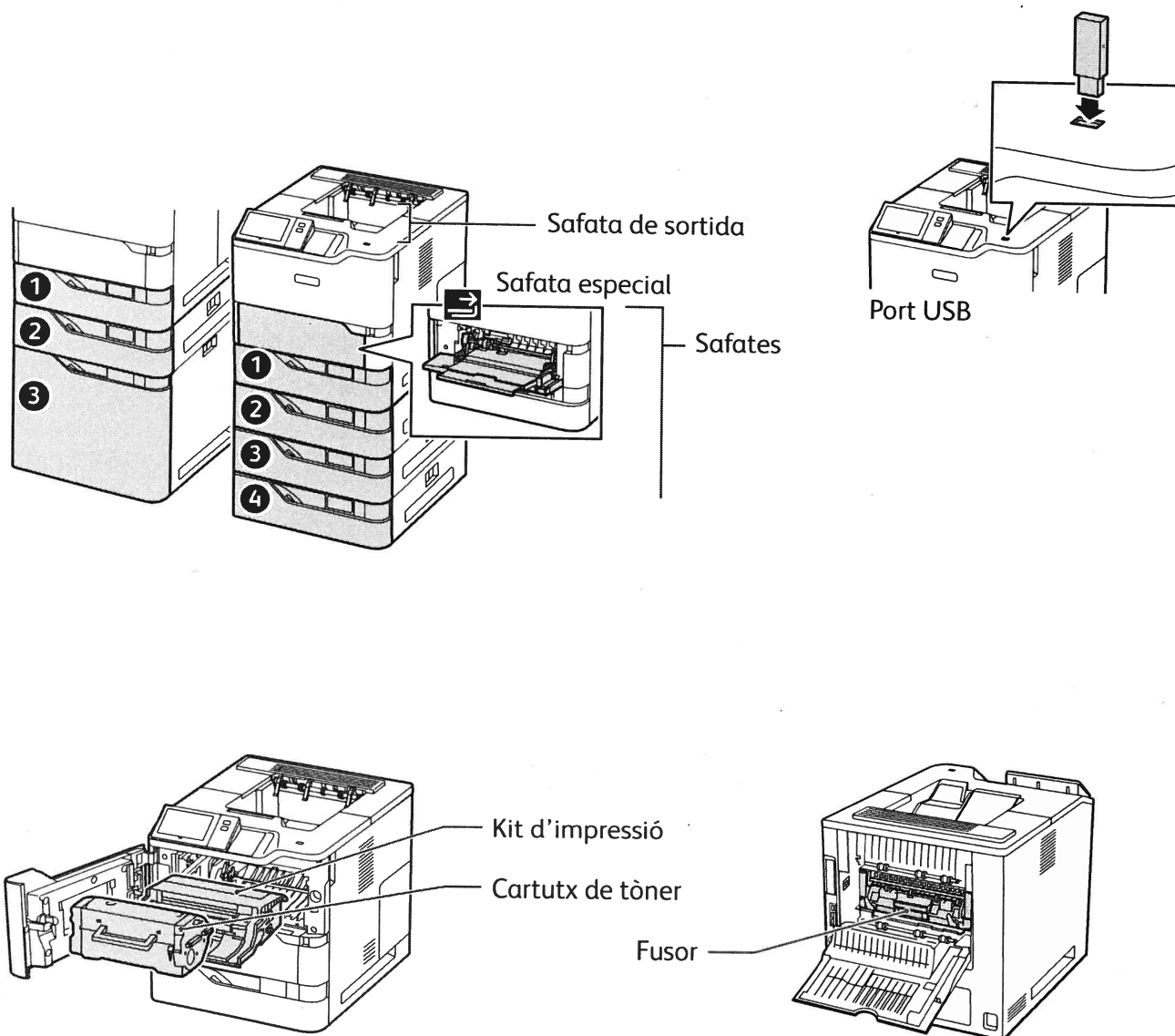
App Gallery

El Xerox App Gallery disposa d'una recopilació cada cop més gran d'aplicacions de productivitat que podeu instal·lar a la impressora. Trobeu l'aplicació a la pantalla inicial i creueu el vostre inici de sessió directament, o aneu a www.xerox.com/appgallery per iniciar una sessió i afegir el vostre dispositiu. Per simplificar la instal·lació de l'aplicació, utilitzeu per a les credencials d'inici de sessió de l'App Gallery el mateix nom que es va utilitzar per a l'inici de sessió de la impressora.



Presentació de la impressora

La configuració de la vostra impressora pot disposar d'accessoris opcionals. Per obtenir més informació, consulteu el *Manual d'usuari*.



Gestió del paper

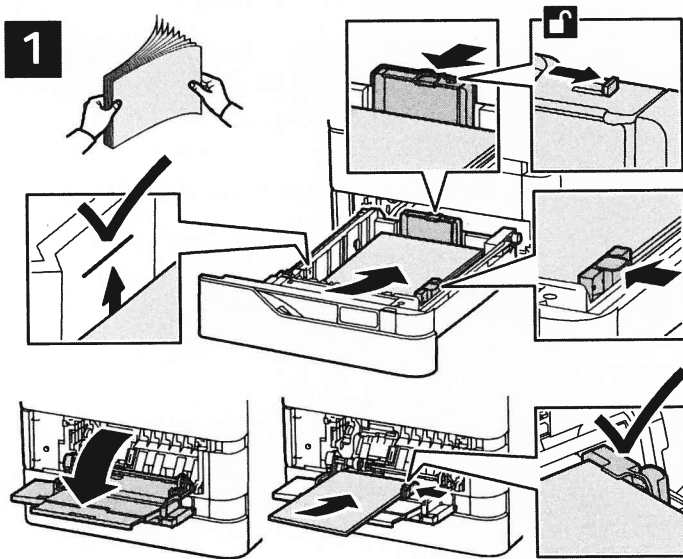
Per veure una llista completa del paper compatible amb la vostra impressora, consulteu la llista de suports recomanats a:

www.xerox.com/rmlna (EUA i Canadà)

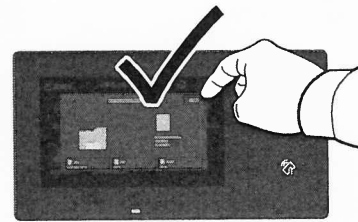
www.xerox.com/rmleu (Europa)

Per obtenir més informació sobre les safates i el paper, consulteu el *Manual d'usuari*.

Col·locació del paper

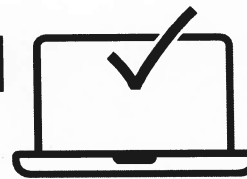


2



Confirmeu o canvieu la configuració de mida i de tipus si cal.

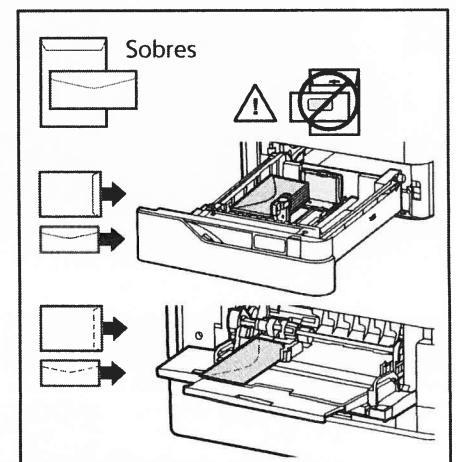
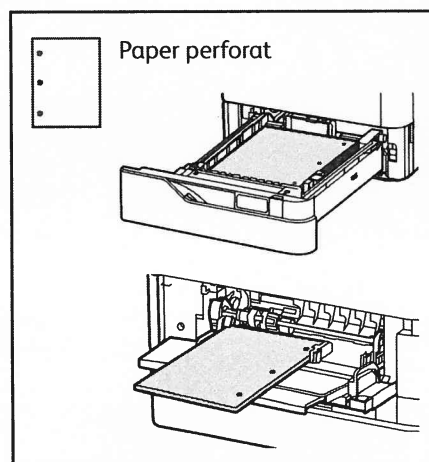
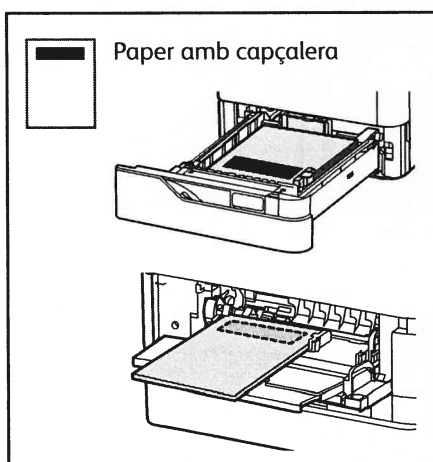
3



Quan imprimiu, seleccioneu les opcions al controlador d'impressió.

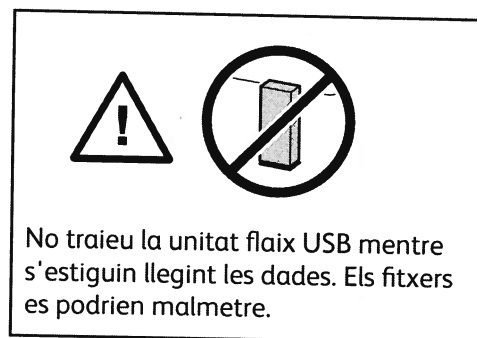
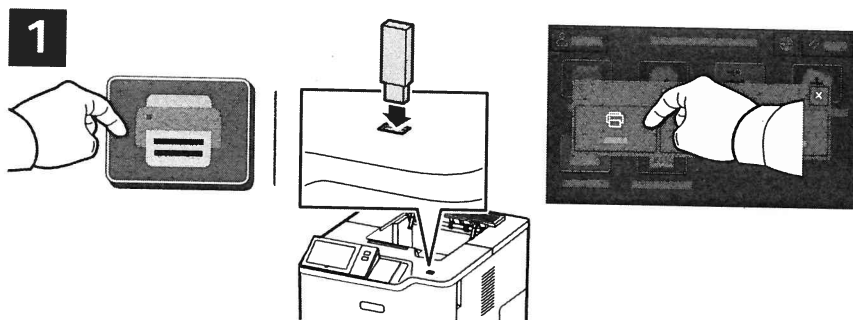
Per obtenir els millors resultats, fullegeu les vores del paper. Ajusteu les guies a la mida del paper. No col·loqueu paper per sobre de la línia de capacitat màxima.

Orientació del paper

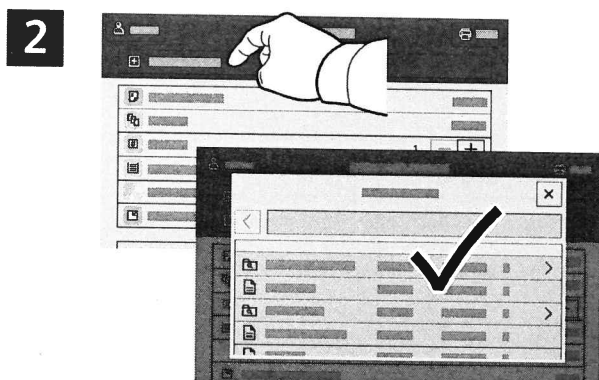


Impressió mitjançant una unitat flaix USB

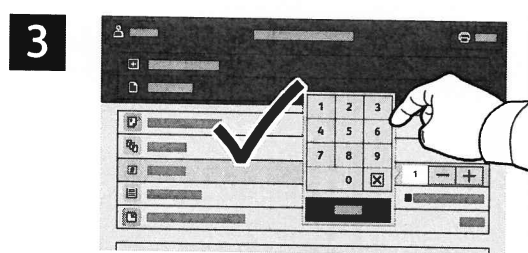
Podeu imprimir fitxers .pdf, .tiff, .ps, .xps i altres tipus de fitxers directament des d'una unitat flaix USB. Per obtenir més informació, consulteu el *Manual d'usuari*.



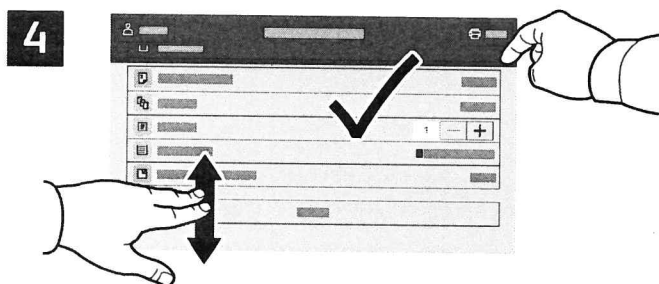
Toqueu **Imprimeix des de** o inseriu la unitat flaix USB i, a continuació, seleccioneu **Imprimeix des d'USB**.



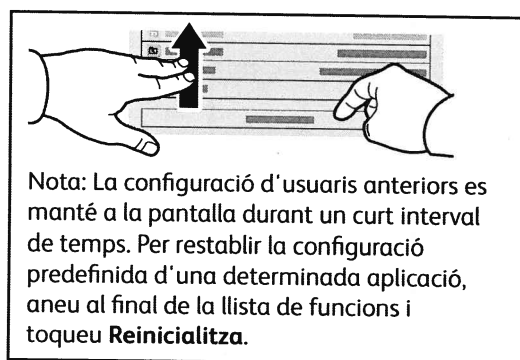
Toqueu **Afegeix el document**, aneu als vostres fitxers i seleccioneu-los.



Per seleccionar el nombre de còpies, toqueu el signe més (+) o el signe menys (-). Per introduir números més grans, toqueu **Quantitat** i, a continuació, introduïu un número.



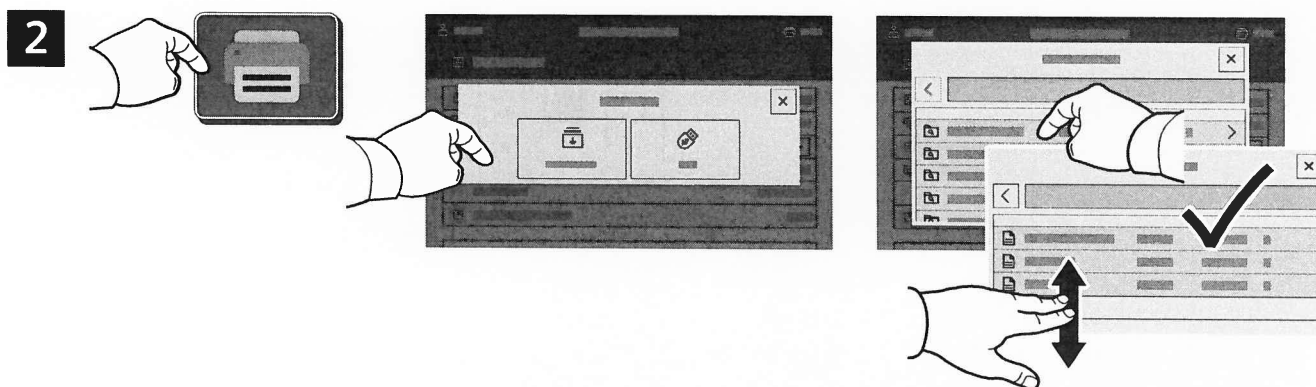
Canvieu la configuració com calgui i després toqueu **Imprimeix**.



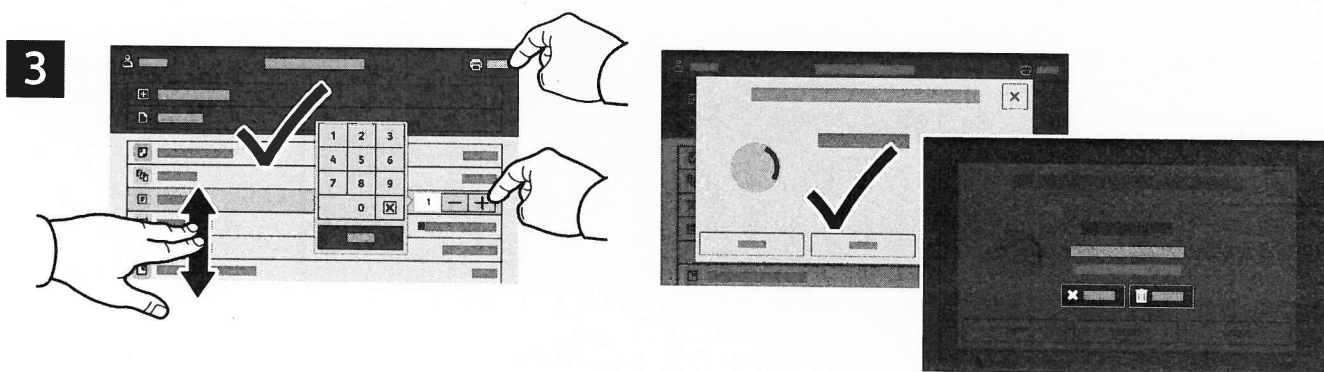
Impressió de treballs emmagatzemats a la impressora



Podeu enviar un treball d'impressió per desar-lo a la impressora i seleccionar-lo al tauler de control per imprimir-lo posteriorment. Els treballs es poden desar a la carpeta pública o es poden protegir amb una contrasenya. Al controlador de la impressora de Xerox®, seleccioneu **Propietats** (Windows) o **Funcions de Xerox** (Mac OS) i, a continuació, **Tipus de treball**. Seleccioneu **Treball desat** o **Impressió protegida**. A **Impressió protegida**, introduïu una clau. Feu clic a **D'acord** i imprimeu el treball.



Toqueu **Imprimeix des de** i, a continuació, toqueu **Treballs desats**. Seleccioneu la **carpeta pública predefinida** i, a continuació, seleccioneu el vostre treball d'impressió.



Seleccioneu la configuració de la llista. Per seleccionar el nombre de còpies, toqueu el signe més (+) o el signe menys (-). Per introduir números més grans, toqueu **Quantitat** i, a continuació, introduïu un número. Toqueu **Imprimeix**. Per suprimir el treball, a la pantalla de confirmació i a la pantalla d'impressió, toqueu **Suprimeix**.

PCL5 Font Listing, Page 1

Resident Fonts

Position	Font Name	Print Sample
1	Courier «Esc»(Symbol set«Esc»(s0p«pitch»h0s0b4099T	'ABCDEFGHabcdefgh0123456789&?!.,'
2	CG Times «Esc»(Symbol set«Esc»(s1p«size»v0s0b4101T	'ABCDEFGHabcdefgh0123456789&?!.,'
3	CG Times Bold «Esc»(Symbol set«Esc»(s1p«size»v0s3b4101T	' ABCDEFGHabcdefgh0123456789&?!.,'
4	CG Times Italic «Esc»(Symbol set«Esc»(s1p«size»v1s0b4101T	' <i>ABCDEFGHabcdefgh0123456789&?!.,'</i>
5	CG Times Bold Italic «Esc»(Symbol set«Esc»(s1p«size»v1s3b4101T	' <i>ABCDEFGHabcdefgh0123456789&?!.,'</i>
6	CG Omega «Esc»(Symbol set«Esc»(s1p«size»v0s0b4113T	'ABCDEFGHabcdefgh0123456789&?!.,'
7	CG Omega Bold «Esc»(Symbol set«Esc»(s1p«size»v0s3b4113T	' ABCDEFGHabcdefgh0123456789&?!.,'
8	CG Omega Italic «Esc»(Symbol set«Esc»(s1p«size»v1s0b4113T	' <i>ABCDEFGHabcdefgh0123456789&?!.,'</i>
9	CG Omega Bold Italic «Esc»(Symbol set«Esc»(s1p«size»v1s3b4113T	' <i>ABCDEFGHabcdefgh0123456789&?!.,'</i>
10	Coronet «Esc»(Symbol set«Esc»(s1p«size»v1s0b4116T	' <i>ABCDEF^Gabcdefgh0123456789&?!.,'</i>
11	Clarendon Condensed «Esc»(Symbol set«Esc»(s1p«size»v4s3b4140T	' ABCDEFGHabcdefgh0123456789&?!.,'
12	Univers Medium «Esc»(Symbol set«Esc»(s1p«size»v0s0b4148T	'ABCDEFGHabcdefgh0123456789&?!.,'
13	Univers Bold «Esc»(Symbol set«Esc»(s1p«size»v0s3b4148T	' ABCDEFGHabcdefgh0123456789&?!.,'
14	Univers Medium Italic «Esc»(Symbol set«Esc»(s1p«size»v1s0b4148T	' <i>ABCDEFGHabcdefgh0123456789&?!.,'</i>
15	Univers Bold Italic «Esc»(Symbol set«Esc»(s1p«size»v1s3b4148T	' <i>ABCDEFGHabcdefgh0123456789&?!.,'</i>
16	Univers Medium Condensed «Esc»(Symbol set«Esc»(s1p«size»v4s0b4148T	' ABCDEFGHabcdefgh0123456789&?!.,'
17	Univers Bold Condensed «Esc»(Symbol set«Esc»(s1p«size»v4s3b4148T	' ABCDEFGHabcdefgh0123456789&?!.,'
18	Univers Medium Condensed Italic «Esc»(Symbol set«Esc»(s1p«size»v5s0b4148T	' <i>ABCDEFGHabcdefgh0123456789&?!.,'</i>

Resident Fonts

Position	Font Name	Print Sample
19	Univers Bold Condensed Italic «Esc»(Symbol set«Esc»(s1p«size»v5s3b4148T	'ABCDEFGabcdefg0123456789&?!.,'
20	Antique Olive «Esc»(Symbol set«Esc»(s1p«size»v0s0b4168T	'ABCDEFGabcdefg0123456789&?!.,'
21	Antique Olive Bold «Esc»(Symbol set«Esc»(s1p«size»v0s3b4168T	'ABCDEFGabcdefg0123456789&?!.,'
22	Antique Olive Italic «Esc»(Symbol set«Esc»(s1p«size»v1s0b4168T	'ABCDEFGabcdefg0123456789&?!.,'
23	Garamond Antiqua «Esc»(Symbol set«Esc»(s1p«size»v0s0b4197T	'ABCDEFGabcdefg0123456789&?!.,'
24	Garamond Halbfett «Esc»(Symbol set«Esc»(s1p«size»v0s3b4197T	'ABCDEFGabcdefg0123456789&?!.,'
25	Garamond Kursiv «Esc»(Symbol set«Esc»(s1p«size»v1s0b4197T	'ABCDEFGabcdefg0123456789&?!.,'
26	Garamond Kursiv Halbfett «Esc»(Symbol set«Esc»(s1p«size»v1s3b4197T	'ABCDEFGabcdefg0123456789&?!.,'
27	Marigold «Esc»(Symbol set«Esc»(s1p«size»v0s0b4297T	'ABCDEFGabcdefg0123456789&?!.,'
28	Albertus Medium «Esc»(Symbol set«Esc»(s1p«size»v0s1b4362T	'ABCDEFGabcdefg0123456789&?!.,'
29	Albertus Extra Bold «Esc»(Symbol set«Esc»(s1p«size»v0s4b4362T	'ABCDEFGabcdefg0123456789&?!.,'
30	Ryadh «Esc»(Symbol set«Esc»(s1p«size»v0s0b4859T	ABCDEFGabcdefg0123456789&?!.,'
31	Ryadh Bold «Esc»(Symbol set«Esc»(s1p«size»v0s3b4859T	ABCDEFGabcdefg0123456789&?!.,'
32	Malka «Esc»(Symbol set«Esc»(s1p«size»v0s0b16584T	ABCDEFGabcdefg0123456789&?!.,'
33	Malka Bold «Esc»(Symbol set«Esc»(s1p«size»v0s3b16584T	ABCDEFGabcdefg0123456789&?!.,'
34	Malka Italic «Esc»(Symbol set«Esc»(s1p«size»v1s0b16584T	ABCDEFGabcdefg0123456789&?!.,'
35	Dorit «Esc»(Symbol set«Esc»(s1p«size»v0s0b16585T	ABCDEFGabcdefg0123456789&?!.,'
36	Dorit Bold «Esc»(Symbol set«Esc»(s1p«size»v0s3b16585T	ABCDEFGabcdefg0123456789&?!.,'

PCL5 Font Listing, Page 3

Resident Fonts

Position	Font Name	Print Sample
37	Naamit «Esc»(Symbol set«Esc»(s1p«size»v0s0b16587T	ABCDEFGabcdefg0123456789&?!.,'
38	Naamit Bold «Esc»(Symbol set«Esc»(s1p«size»v0s3b16587T	ABCDEFGabcdefg0123456789&?!.,'
39	Arial «Esc»(Symbol set«Esc»(s1p«size»v0s0b16602T	'ABCDEFGabcdefg0123456789&?!.,'
40	Arial Bold «Esc»(Symbol set«Esc»(s1p«size»v0s3b16602T	'ABCDEFGabcdefg0123456789&?!.,'
41	Arial Italic «Esc»(Symbol set«Esc»(s1p«size»v1s0b16602T	<i>'ABCDEFGabcdefg0123456789&?!.,'</i>
42	Arial Bold Italic «Esc»(Symbol set«Esc»(s1p«size»v1s3b16602T	<i>'ABCDEFGabcdefg0123456789&?!.,'</i>
43	Times New Roman «Esc»(Symbol set«Esc»(s1p«size»v0s0b16901T	'ABCDEFGabcdefg0123456789&?!.,'
44	Times New Roman Bold «Esc»(Symbol set«Esc»(s1p«size»v0s3b16901T	'ABCDEFGabcdefg0123456789&?!.,'
45	Times New Roman Italic «Esc»(Symbol set«Esc»(s1p«size»v1s0b16901T	<i>'ABCDEFGabcdefg0123456789&?!.,'</i>
46	Times New Roman Bold Italic «Esc»(Symbol set«Esc»(s1p«size»v1s3b16901T	<i>'ABCDEFGabcdefg0123456789&?!.,'</i>
47	Helvetica «Esc»(Symbol set«Esc»(s1p«size»v0s0b24580T	'ABCDEFGabcdefg0123456789&?!.,'
48	Helvetica Bold «Esc»(Symbol set«Esc»(s1p«size»v0s3b24580T	'ABCDEFGabcdefg0123456789&?!.,'
49	Helvetica Oblique «Esc»(Symbol set«Esc»(s1p«size»v1s0b24580T	<i>'ABCDEFGabcdefg0123456789&?!.,'</i>
50	Helvetica Bold Oblique «Esc»(Symbol set«Esc»(s1p«size»v1s3b24580T	<i>'ABCDEFGabcdefg0123456789&?!.,'</i>
51	Helvetica Narrow «Esc»(Symbol set«Esc»(s1p«size»v4s0b24580T	'ABCDEFGabcdefg0123456789&?!.,'
52	Helvetica Narrow Bold «Esc»(Symbol set«Esc»(s1p«size»v4s3b24580T	'ABCDEFGabcdefg0123456789&?!.,'
53	Helvetica Narrow Oblique «Esc»(Symbol set«Esc»(s1p«size»v5s0b24580T	<i>'ABCDEFGabcdefg0123456789&?!.,'</i>
54	Helvetica Narrow Bold Oblique «Esc»(Symbol set«Esc»(s1p«size»v5s3b24580T	<i>'ABCDEFGabcdefg0123456789&?!.,'</i>

Resident Fonts

Position	Font Name	Print Sample
55	Palatino Roman «Esc»(Symbol set«Esc»(s1p«size»v0s0b24591T	'ABCDEFGabcdefg0123456789&?!.,'
56	Palatino Bold «Esc»(Symbol set«Esc»(s1p«size»v0s3b24591T	'ABCDEFGabcdefg0123456789&?!.,'
57	Palatino Italic «Esc»(Symbol set«Esc»(s1p«size»v1s0b24591T	'ABCDEFGabcdefg0123456789&?!.,'
58	Palatino Bold Italic «Esc»(Symbol set«Esc»(s1p«size»v1s3b24591T	'ABCDEFGabcdefg0123456789&?!.,'
59	ITC Avant Garde Book «Esc»(Symbol set«Esc»(s1p«size»v0s0b24607T	'ABCDEFGabcdefg0123456789&?!.,'
60	ITC Avant Garde DemiBold «Esc»(Symbol set«Esc»(s1p«size»v0s2b24607T	'ABCDEFGabcdefg0123456789&?!.,'
61	ITC Avant Garde Book Oblique «Esc»(Symbol set«Esc»(s1p«size»v1s0b24607T	'ABCDEFGabcdefg0123456789&?!.,'
62	ITC Avant Garde DemiBold Oblique «Esc»(Symbol set«Esc»(s1p«size»v1s2b24607T	'ABCDEFGabcdefg0123456789&?!.,'
63	ITC Bookman Light «Esc»(Symbol set«Esc»(s1p«size»v0s-3b24623T	'ABCDEFGabcdefg0123456789&?!.,'
64	ITC Bookman DemiBold «Esc»(Symbol set«Esc»(s1p«size»v0s2b24623T	'ABCDEFGabcdefg0123456789&?!.,'
65	ITC Bookman Light Italic «Esc»(Symbol set«Esc»(s1p«size»v1s-3b24623T	'ABCDEFGabcdefg0123456789&?!.,'
66	ITC Bookman DemiBold Italic «Esc»(Symbol set«Esc»(s1p«size»v1s2b24623T	'ABCDEFGabcdefg0123456789&?!.,'
67	New Century Schoolbook Roman «Esc»(Symbol set«Esc»(s1p«size»v0s0b24703T	'ABCDEFGabcdefg0123456789&?!.,'
68	New Century Schoolbook Bold «Esc»(Symbol set«Esc»(s1p«size»v0s3b24703T	'ABCDEFGabcdefg0123456789&?!.,'
69	New Century Schoolbook Italic «Esc»(Symbol set«Esc»(s1p«size»v1s0b24703T	'ABCDEFGabcdefg0123456789&?!.,'
70	New Century Schoolbook Bold Ital «Esc»(Symbol set«Esc»(s1p«size»v1s3b24703T	'ABCDEFGabcdefg0123456789&?!.,'
71	Times Roman «Esc»(Symbol set«Esc»(s1p«size»v0s0b25093T	'ABCDEFGabcdefg0123456789&?!.,'
72	Times Roman Bold «Esc»(Symbol set«Esc»(s1p«size»v0s3b25093T	'ABCDEFGabcdefg0123456789&?!.,'

Resident Fonts

Position	Font Name	Print Sample
91	Courier PS Bold «Esc»(Symbol set«Esc»(s0p«pitch»h0s3b24579T	' ABCDEFGGabcdefg0123456789&?!.,'
92	Courier PS Oblique «Esc»(Symbol set«Esc»(s0p«pitch»h1s0b24579T	' <i>ABCDEFGGabcdefg0123456789&?!.,'</i>
93	Courier PS Bold Oblique «Esc»(Symbol set«Esc»(s0p«pitch»h1s3b24579T	' <i>ABCDEFGGabcdefg0123456789&?!.,'</i>
94	Line Printer «Esc»(8U«Esc»(s0p16.67h8.48v0s0b0T	'ABCDEFGabcdefg0123456789&?!.,'

PostScript Font Listing

Internal Fonts:

AlbertusMT	ABCDEFGH abcdefg 0123456789 &?!\$,€
AlbertusMT-Italic	<i>ABCDEFGH abcdefg 0123456789 &?!\$,€</i>
AlbertusMT-Light	ABCDEFGH abcdefg 0123456789 &?!\$,€
AntiqueOlive-Bold	ABCDEFGH abcdefg 0123456789 &?!\$,€
AntiqueOlive-Compact	ABCDEFGH abcdefg 0123456789 &?!\$,€
AntiqueOlive-Italic	<i>ABCDEFGH abcdefg 0123456789 &?!\$,€</i>
AntiqueOlive-Roman	ABCDEFGH abcdefg 0123456789 &?!\$,€
Apple-Chancery	<i>ABCDEFGH abcdefg 0123456789 &?!\$,€</i>
Arial-BoldItalicMT	ABCDEFGH abcdefg 0123456789 &?!\$,€
Arial-BoldMT	ABCDEFGH abcdefg 0123456789 &?!\$,€
Arial-ItalicMT	<i>ABCDEFGH abcdefg 0123456789 &?!\$,€</i>
ArialMT	ABCDEFGH abcdefg 0123456789 &?!\$,€
AvantGarde-Book	ABCDEFGH abcdefg 0123456789 &?!\$,€
AvantGarde-BookOblique	<i>ABCDEFGH abcdefg 0123456789 &?!\$,€</i>
AvantGarde-Demi	ABCDEFGH abcdefg 0123456789 &?!\$,€
AvantGarde-DemiOblique	<i>ABCDEFGH abcdefg 0123456789 &?!\$,€</i>
Bodoni	ABCDEFGH abcdefg 0123456789 &?!\$,€
Bodoni-Bold	ABCDEFGH abcdefg 0123456789 &?!\$,€
Bodoni-BoldItalic	<i>ABCDEFGH abcdefg 0123456789 &?!\$,€</i>
Bodoni-Italic	<i>ABCDEFGH abcdefg 0123456789 &?!\$,€</i>
Bodoni-Poster	ABCDEFGH abcdefg 0123456789 &?!\$,€
Bodoni-PosterCompressed	<i>ABCDEFGH abcdefg 0123456789 &?!\$,€</i>
Bookman-Demi	ABCDEFGH abcdefg 0123456789 &?!\$,€
Bookman-DemiItalic	<i>ABCDEFGH abcdefg 0123456789 &?!\$,€</i>
Bookman-Light	ABCDEFGH abcdefg 0123456789 &?!\$,€
Bookman-LightItalic	<i>ABCDEFGH abcdefg 0123456789 &?!\$,€</i>
Carta	*!@#%&'()*+,-./:;<=>?[]^_`{ }~ 0123456789 *!@#%&'()*+,-./:;<=>?[]^_`{ }~
Chicago	ABCDEFGH abcdefg 0123456789 &?!\$,€
Clarendon	ABCDEFGH abcdefg 0123456789 &?!\$,€
Clarendon-Bold	ABCDEFGH abcdefg 0123456789 &?!\$,€
Clarendon-Light	ABCDEFGH abcdefg 0123456789 &?!\$,€
CooperBlack	ABCDEFGH abcdefg 0123456789 &?!\$,€
CooperBlack-Italic	<i>ABCDEFGH abcdefg 0123456789 &?!\$,€</i>
Copperplate-ThirtyThreeBC	ABCDEFGH ABCDEFG 0123456789 &?!\$,€
Copperplate-ThirtyTwoBC	ABCDEFGH ABCDEFG 0123456789 &?!\$,€
Coronet-Regular	<i>ABCDEFGH abcdefg 0123456789 &?!\$,€</i>
Courier	ABCDEFGH abcdefg 0123456789 &?!\$,€
Courier-Bold	ABCDEFGH abcdefg 0123456789 &?!\$,€
Courier-BoldOblique	<i>ABCDEFGH abcdefg 0123456789 &?!\$,€</i>
Courier-Oblique	<i>ABCDEFGH abcdefg 0123456789 &?!\$,€</i>
Eurostile	ABCDEFGH abcdefg 0123456789 &?!\$,€
Eurostile-Bold	ABCDEFGH abcdefg 0123456789 &?!\$,€
Eurostile-BoldExtendedTwo	ABCDEFGH abcdefg 0123456789 &?!\$,€
Eurostile-ExtendedTwo	ABCDEFGH abcdefg 0123456789 &?!\$,€
Geneva	ABCDEFGH abcdefg 0123456789 &?!\$,€
GillSans	ABCDEFGH abcdefg 0123456789 &?!\$,€
GillSans-Bold	ABCDEFGH abcdefg 0123456789 &?!\$,€
GillSans-BoldCondensed	ABCDEFGH abcdefg 0123456789 &?!\$,€
GillSans-BoldItalic	<i>ABCDEFGH abcdefg 0123456789 &?!\$,€</i>
GillSans-Condensed	ABCDEFGH abcdefg 0123456789 &?!\$,€
GillSans-ExtraBold	ABCDEFGH abcdefg 0123456789 &?!\$,€
GillSans-Italic	<i>ABCDEFGH abcdefg 0123456789 &?!\$,€</i>
GillSans-Light	ABCDEFGH abcdefg 0123456789 &?!\$,€
GillSans-LightItalic	<i>ABCDEFGH abcdefg 0123456789 &?!\$,€</i>
Goudy	ABCDEFGH abcdefg 0123456789 &?!\$,€
Goudy-Bold	ABCDEFGH abcdefg 0123456789 &?!\$,€
Goudy-BoldItalic	<i>ABCDEFGH abcdefg 0123456789 &?!\$,€</i>
Goudy-ExtraBold	ABCDEFGH abcdefg 0123456789 &?!\$,€
Goudy-Italic	<i>ABCDEFGH abcdefg 0123456789 &?!\$,€</i>
GreekMono737	ABCDEFGH abcdefg 0123456789 &?!\$,€
GreekMono737-Bold	ABCDEFGH abcdefg 0123456789 &?!\$,€
GreekMono737-BoldItalic	<i>ABCDEFGH abcdefg 0123456789 &?!\$,€</i>
GreekMono737-Italic	<i>ABCDEFGH abcdefg 0123456789 &?!\$,€</i>
GreekMono851	ABCDEFGH abcdefg 0123456789 &?!\$,€
GreekMono851-Bold	ABCDEFGH abcdefg 0123456789 &?!\$,€
GreekMono851-BoldItalic	<i>ABCDEFGH abcdefg 0123456789 &?!\$,€</i>
GreekMono851-Italic	<i>ABCDEFGH abcdefg 0123456789 &?!\$,€</i>
GreekMono8859-7	ABCDEFGH abcdefg 0123456789 &?!\$,€
GreekMono8859-7Bold	ABCDEFGH abcdefg 0123456789 &?!\$,€

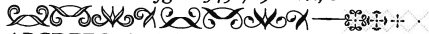
Printed On: Apr 24, 2025, 11:42:02

©2017-2019 Xerox Corporation. All Rights Reserved.

Xerox® and VersaLink® are trademarks of Xerox Corporation in the United States and/or other countries.

PostScript Font Listing

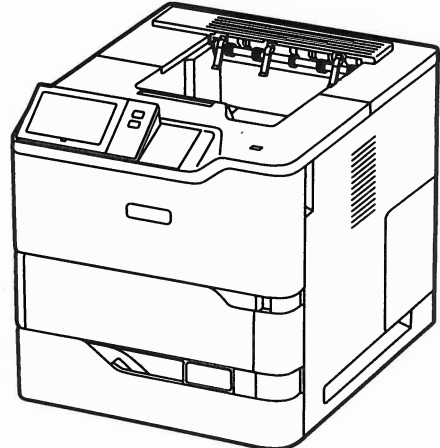
Internal Fonts (continued):

GreekMono8859-7BoldItalic	ABCDEFG abcdefg 0123456789 &?!\$.,
GreekMono8859-7Italic	ABCDEFG abcdefg 0123456789 &?!\$.,
GreekSans737	ABCDEFG abcdefg 0123456789 &?!\$.,
GreekSans737-Bold	ABCDEFG abcdefg 0123456789 &?!\$.,
GreekSans737-BoldItalic	ABCDEFG abcdefg 0123456789 &?!\$.,
GreekSans737-Italic	ABCDEFG abcdefg 0123456789 &?!\$.,
GreekSans851	ABCDEFG abcdefg 0123456789 &?!\$.,
GreekSans851-Bold	ABCDEFG abcdefg 0123456789 &?!\$.,
GreekSans851-BoldItalic	ABCDEFG abcdefg 0123456789 &?!\$.,
GreekSans851-Italic	ABCDEFG abcdefg 0123456789 &?!\$.,
GreekSans8859-7	ABCDEFG abcdefg 0123456789 &?!\$.,
GreekSans8859-7Bold	ABCDEFG abcdefg 0123456789 &?!\$.,
GreekSans8859-7BoldItalic	ABCDEFG abcdefg 0123456789 &?!\$.,
GreekSans8859-7Italic	ABCDEFG abcdefg 0123456789 &?!\$.,
GreekSerif737	ABCDEFG abcdefg 0123456789 &?!\$.,
GreekSerif737-Bold	ABCDEFG abcdefg 0123456789 &?!\$.,
GreekSerif737-BoldItalic	ABCDEFG abcdefg 0123456789 &?!\$.,
GreekSerif737-Italic	ABCDEFG abcdefg 0123456789 &?!\$.,
GreekSerif851	ABCDEFG abcdefg 0123456789 &?!\$.,
GreekSerif851-Bold	ABCDEFG abcdefg 0123456789 &?!\$.,
GreekSerif851-BoldItalic	ABCDEFG abcdefg 0123456789 &?!\$.,
GreekSerif851-Italic	ABCDEFG abcdefg 0123456789 &?!\$.,
GreekSerif8859-7	ABCDEFG abcdefg 0123456789 &?!\$.,
GreekSerif8859-7Bold	ABCDEFG abcdefg 0123456789 &?!\$.,
GreekSerif8859-7BoldItalic	ABCDEFG abcdefg 0123456789 &?!\$.,
GreekSerif8859-7Italic	ABCDEFG abcdefg 0123456789 &?!\$.,
Helvetica	ABCDEFG abcdefg 0123456789 &?!\$.,€
Helvetica-Bold	ABCDEFG abcdefg 0123456789 &?!\$.,€
Helvetica-BoldOblique	ABCDEFG abcdefg 0123456789 &?!\$.,€
Helvetica-Condensed	ABCDEFG abcdefg 0123456789 &?!\$.,€
Helvetica-Condensed-Bold	ABCDEFG abcdefg 0123456789 &?!\$.,€
Helvetica-Condensed-BoldOblique	ABCDEFG abcdefg 0123456789 &?!\$.,€
Helvetica-Condensed-Oblique	ABCDEFG abcdefg 0123456789 &?!\$.,€
Helvetica-Narrow	ABCDEFG abcdefg 0123456789 &?!\$.,€
Helvetica-Narrow-Bold	ABCDEFG abcdefg 0123456789 &?!\$.,€
Helvetica-Narrow-BoldOblique	ABCDEFG abcdefg 0123456789 &?!\$.,€
Helvetica-Narrow-Oblique	ABCDEFG abcdefg 0123456789 &?!\$.,€
Helvetica-Oblique	ABCDEFG abcdefg 0123456789 &?!\$.,€
HoeflerText-Black	ABCDEFG abcdefg 0123456789 &?!\$.,€
HoeflerText-BlackItalic	ABCDEFG abcdefg 0123456789 &?!\$.,€
HoeflerText-Italic	ABCDEFG abcdefg 0123456789 &?!\$.,€
HoeflerText-Ornaments	
HoeflerText-Regular	ABCDEFG abcdefg 0123456789 &?!\$.,€
JoannaMT	ABCDEFG abcdefg 0123456789 &?!\$.,€
JoannaMT-Bold	ABCDEFG abcdefg 0123456789 &?!\$.,€
JoannaMT-BoldItalic	ABCDEFG abcdefg 0123456789 &?!\$.,€
JoannaMT-Italic	ABCDEFG abcdefg 0123456789 &?!\$.,€
LetterGothic	ABCDEFG abcdefg 0123456789 &?!\$.,€
LetterGothic-Bold	ABCDEFG abcdefg 0123456789 &?!\$.,€
LetterGothic-BoldSlanted	ABCDEFG abcdefg 0123456789 &?!\$.,€
LetterGothic-Slanted	ABCDEFG abcdefg 0123456789 &?!\$.,€
LubalinGraph-Book	ABCDEFG abcdefg 0123456789 &?!\$.,€
LubalinGraph-BookOblique	ABCDEFG abcdefg 0123456789 &?!\$.,€
LubalinGraph-Demi	ABCDEFG abcdefg 0123456789 &?!\$.,€
LubalinGraph-DemiOblique	ABCDEFG abcdefg 0123456789 &?!\$.,€
Marigold	ABCDEFG abcdefg 0123456789 &?!\$.,€
MonaLisa-Recut	ABCDEFG abcdefg 0123456789 &?!\$.,€
Monaco	ABCDEFG abcdefg 0123456789 &?!\$.,€
NewCenturySchlbk-Bold	ABCDEFG abcdefg 0123456789 &?!\$.,€
NewCenturySchlbk-BoldItalic	ABCDEFG abcdefg 0123456789 &?!\$.,€
NewCenturySchlbk-Italic	ABCDEFG abcdefg 0123456789 &?!\$.,€
NewCenturySchlbk-Roman	ABCDEFG abcdefg 0123456789 &?!\$.,€
NewYork	ABCDEFG abcdefg 0123456789 &?!\$.,€
Optima	ABCDEFG abcdefg 0123456789 &?!\$.,€
Optima-Bold	ABCDEFG abcdefg 0123456789 &?!\$.,€
Optima-BoldItalic	ABCDEFG abcdefg 0123456789 &?!\$.,€
Optima-Italic	ABCDEFG abcdefg 0123456789 &?!\$.,€
Oxford	ABCDEFG abcdefg 0123456789 &?!\$.,€
Palatino-Bold	ABCDEFG abcdefg 0123456789 &?!\$.,€


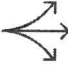


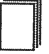

Xerox® VersaLink® B620 Printer

Configurable, connected, and highly capable.

The VersaLink® B620 Printer gives you the freedom to work where and how you want. Loaded with features designed to increase productivity, this highly configurable, cloud-connected workplace assistant delivers completely new capabilities that go far beyond the competition. You can count on the B620 to make your business more efficient.



PRINT, CLOUD

-  65 ppm Letter
61 ppm A4
-  Solutions
-  Cloud connectivity
-  1200 x 1200 dpi
-  Up to 3,850 pages
-  Optional: 3 additional paper trays

Corporate SAQ Dashboard-2020

My Supplier's Average Score: 90
Overall PEA Average Score: 85

My Supplier's Average Subsection Scores

Subsection	Score
Health, Safety & Environmental Management System	93
Health, Safety & Environmental Assessment Procedures	98
Health, Safety & Environmental Management Assessment	90
Site & Asset Management System Rating	93
Site & Asset Management Assessment	93

2020 Worldwide HAP Enrichment

Region	Enrichment Score
North America	95
Europe	90
Asia Pacific	85
Latin America	80

Reportable Toxic Chemical Releases and Transfers

Year	Releases and Transfers
2018	100
2019	100
2020	100

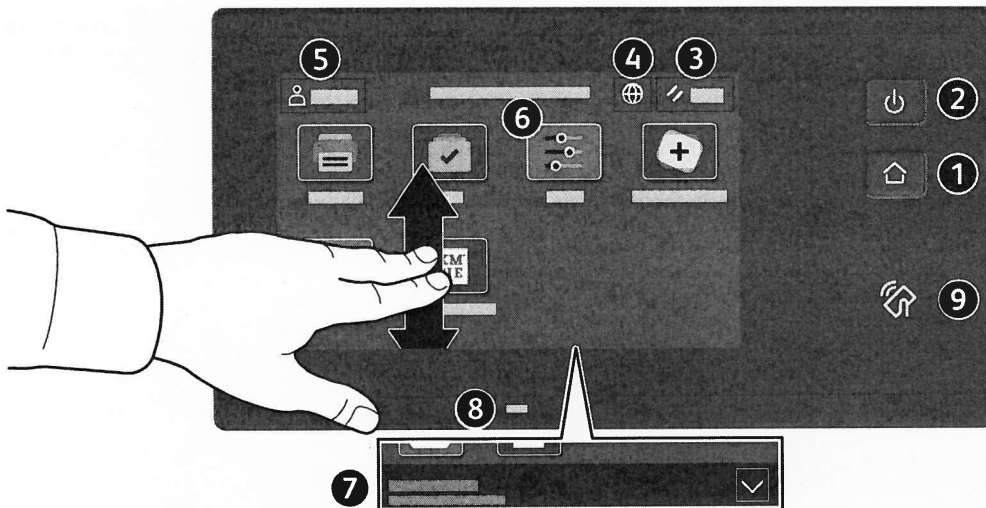
2020 Management of Reportable Toxic Chemicals

Category	Percentage
100% Compliance	100%
99% Compliance	0%
98% Compliance	0%
97% Compliance	0%



Control Panel

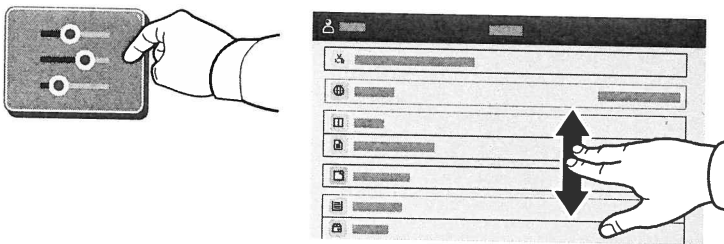
Available apps can vary based on your printer setup. For details about apps and features, refer to the *User Guide*.



- 1 Home returns to the main app screen.
- 2 Power/Wake starts the printer or provides options to sleep, restart or power off the printer.
- 3 Reset restores settings to their default values in all apps.
- 4 Language provides choice of screen languages.
- 5 Log In provides special access to tools and settings.
- 6 Device app provides access to printer information and settings.
- 7 Notification banner shows printer status and warnings. To see all notifications, touch the banner. To close the banner, touch the down arrow.
- 8 Status LED indicates printer status. For detailed information, refer to the *User Guide*.
- 9 NFC Area allows pairing with a mobile device to print from an app.

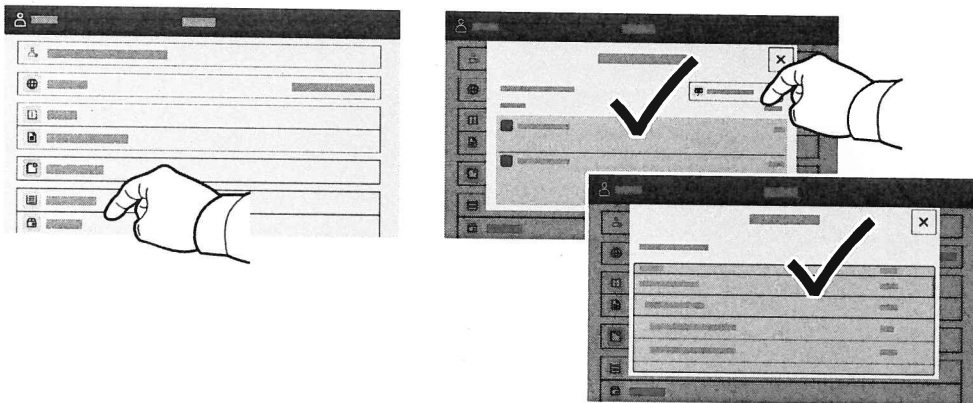
Device app

The Device app provides access to supplies status, printer information, and settings. Some menus and settings require log in with the administrator name and password.



Billing and Usage Information

In the Device features menu, to view basic impression counts, touch **Billing/Usage**. To view detailed usage counts, touch **Usage Counters**. The list provides detailed impression count categories.

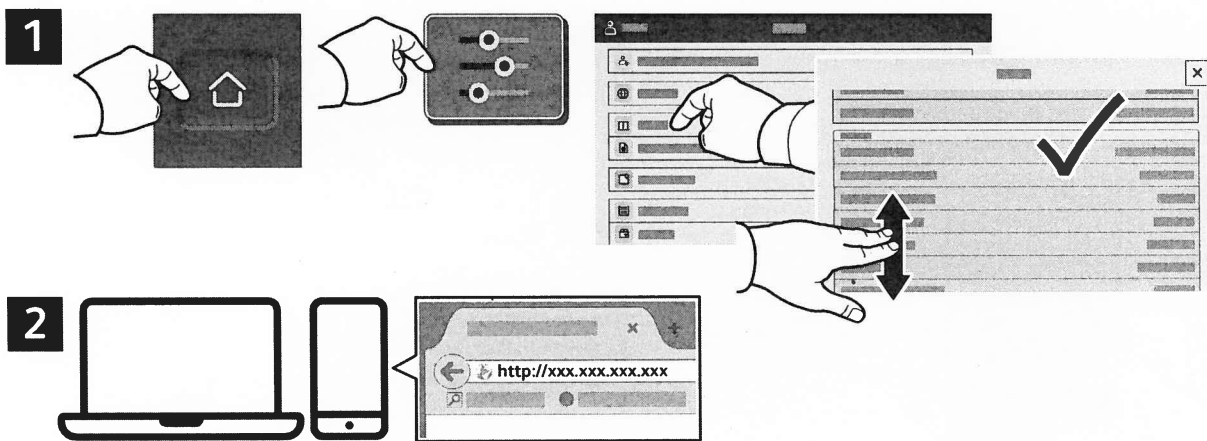


Embedded Web Server

The Xerox® Embedded Web Server enables you to access printer configuration details, paper and supplies status, job status, and diagnostic functions over a network.

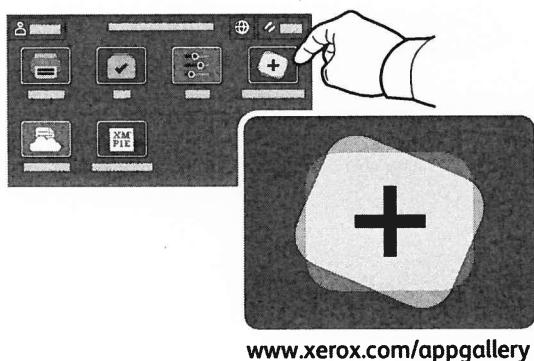
To connect, in a Web browser, type the printer IP address. The network IPv4 address is available on the control panel touch screen. Touch **Device app > About**, then scroll down.

For details on using the Embedded Web Server, refer to the *User Guide* located on Xerox.com.



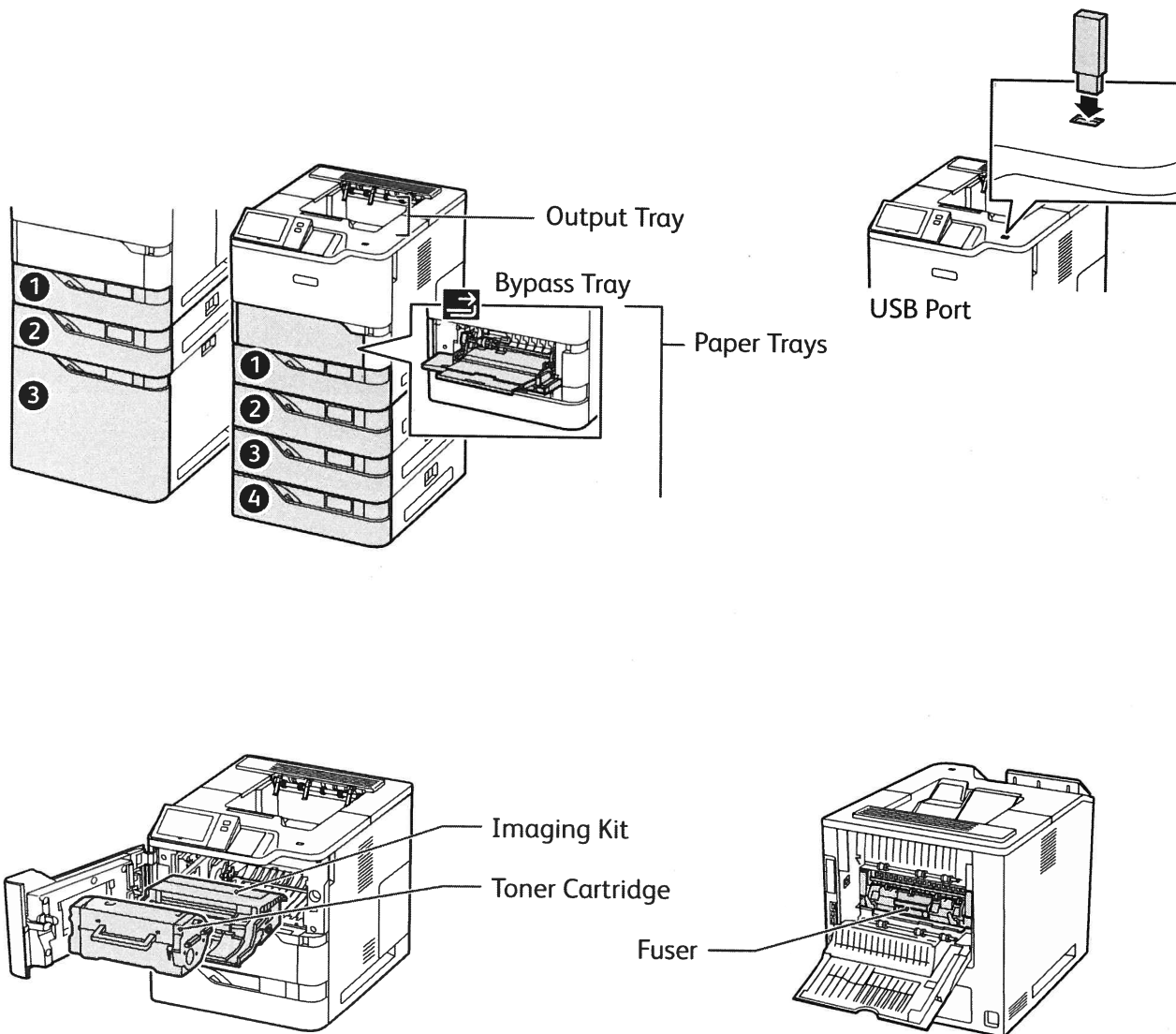
App Gallery

The Xerox App Gallery has a growing collection of productivity apps that you can install on your printer. Find the app on your home screen and create your login directly, or go to www.xerox.com/appgallery to log in and add your device. To simplify app installation, use the same name for your app gallery login credentials that you used for the printer login.



Printer Tour

Optional accessories can be part of your printer setup. For details, refer to the *User Guide*.



Paper Handling

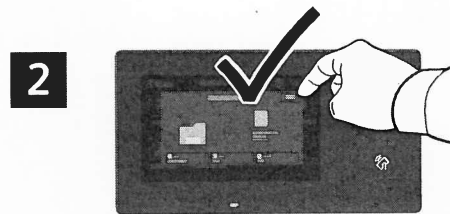
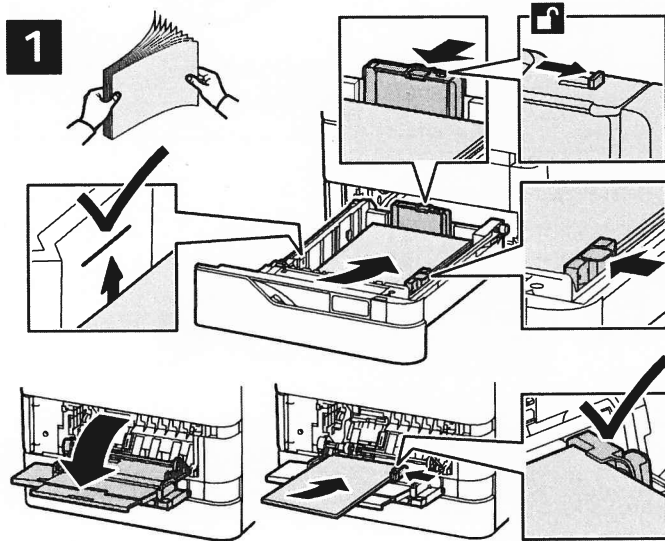
For a complete list of paper that works with your printer, see the Recommended Media List at:

www.xerox.com/rmlna (U. S. and Canada)

www.xerox.com/rmleu (Europe)

For details about trays and paper, refer to the *User Guide*.

Loading Paper



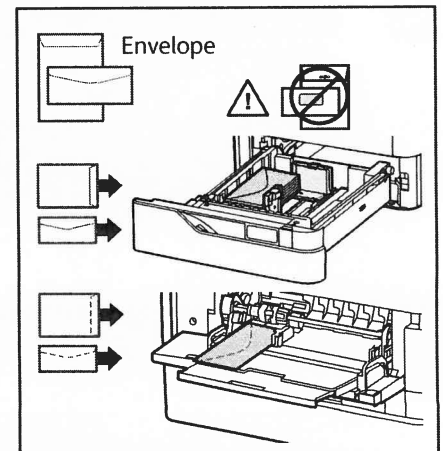
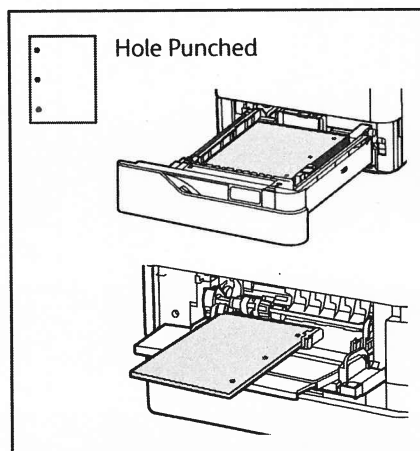
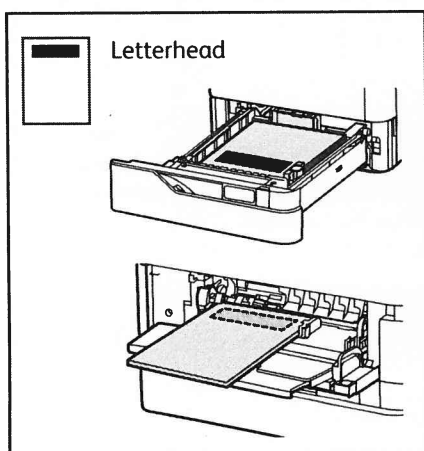
Confirm or change size, type, and color settings if needed.



For the best results, fan the edges of the paper. Adjust the guides to fit the paper size. Do not load paper above the maximum fill line.

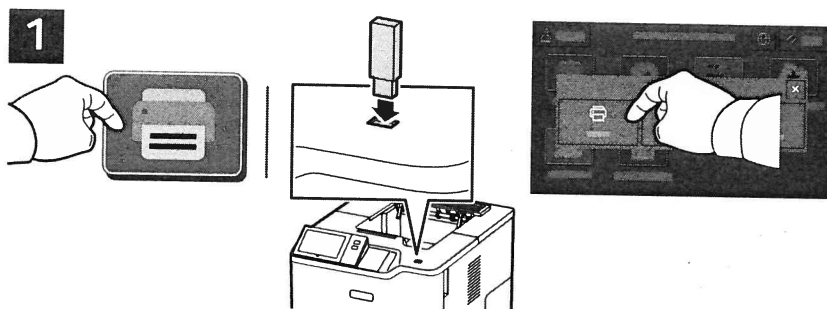
When printing, select options in the print driver.

Paper Orientation

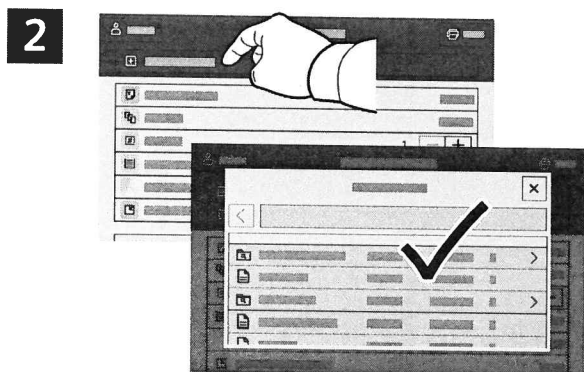


Printing from a USB Flash Drive

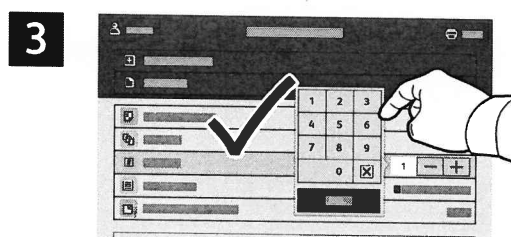
You can print .pdf, .tiff, .ps, .xps and other files types directly from a USB Flash Drive. For more information, refer to the *User Guide*.



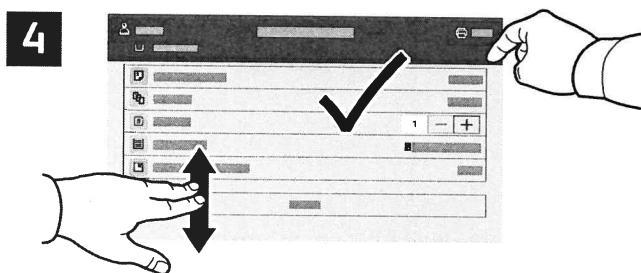
Touch **Print From** or insert your USB Flash Drive, then choose **Print From USB**.



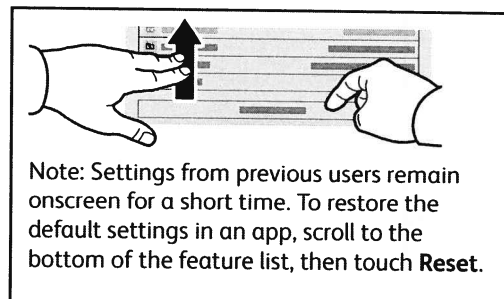
Touch **Add Document**, then navigate to your files and select them.



To select the number of copies, touch the plus sign (+) or the minus sign (-). For larger numbers, touch **Quantity** then enter a number.



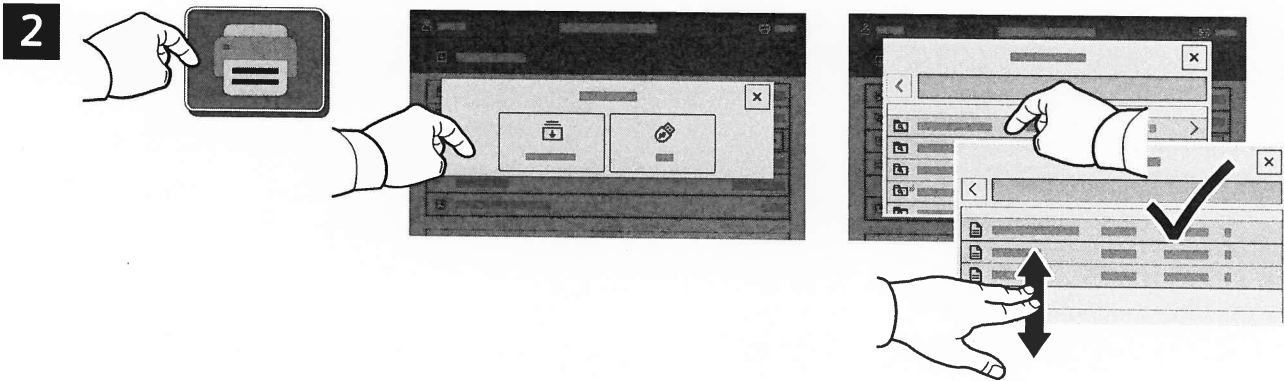
Select settings as needed, then touch **Print**.



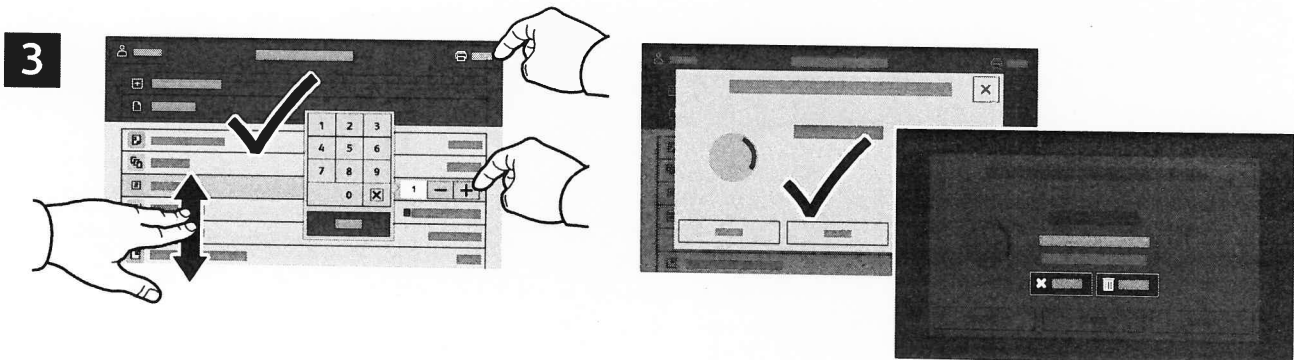
Printing Jobs Stored on the Printer



You can send a print job to save to the printer, then select the job from the printer control panel to print at a later time. Jobs can be saved in the public folder or be password protected. In the Xerox® printer driver, select **Properties** (Windows) or **Xerox Features** (Mac OS), then **Job Type**. Select **Saved Job** or **Secure Print**. For Secure Print, type a passcode. Click **OK** and print the job.



Touch **Print From** then touch **Saved Jobs**. Select the **Default Public Folder** then select your print job.



Select settings from the list. To select the number of copies, touch the plus sign (+) or the minus sign (-). For larger numbers, touch **Quantity** then enter a number. Touch **Print**. To delete the job, in the printing screen and confirmation screen, touch **Delete**.

