

PostScript Font Listing

Internal Fonts:

AlbertusMT	ABCDEF abcdefg 0123456789 &?!\$.€
AlbertusMT-Italic	ABCDEF abcdefg 0123456789 &?!\$.€
AlbertusMT-Light	ABCDEF abcdefg 0123456789 &?!\$.€
AntiqueOlive-Bold	ABCDEF abcdefg 0123456789 &?!\$.€
AntiqueOlive-Compact	ABCDEF abcdefg 0123456789 &?!\$.€
AntiqueOlive-Italic	ABCDEF abcdefg 0123456789 &?!\$.€
AntiqueOlive-Roman	ABCDEF abcdefg 0123456789 &?!\$.€
Apple-Chancery	ABCDEF abcdefg 0123456789 &?!\$.€
Arial-BoldItalicMT	ABCDEF abcdefg 0123456789 &?!\$.€
Arial-BoldMT	ABCDEF abcdefg 0123456789 &?!\$.€
Arial-ItalicMT	ABCDEF abcdefg 0123456789 &?!\$.€
ArialMT	ABCDEF abcdefg 0123456789 &?!\$.€
AvantGarde-Book	ABCDEF abcdefg 0123456789 &?!\$.€
AvantGarde-BookOblique	ABCDEF abcdefg 0123456789 &?!\$.€
AvantGarde-Demi	ABCDEF abcdefg 0123456789 &?!\$.€
AvantGarde-DemiOblique	ABCDEF abcdefg 0123456789 &?!\$.€
Bodoni	ABCDEF abcdefg 0123456789 &?!\$.€
Bodoni-Bold	ABCDEF abcdefg 0123456789 &?!\$.€
Bodoni-BoldItalic	ABCDEF abcdefg 0123456789 &?!\$.€
Bodoni-Italic	ABCDEF abcdefg 0123456789 &?!\$.€
Bodoni-Poster	ABCDEF abcdefg 0123456789 &?!\$.€
Bodoni-PosterCompressed	ABCDEF abcdefg 0123456789 &?!\$.€
Bookman-Demi	ABCDEF abcdefg 0123456789 &?!\$.€
Bookman-DemiItalic	ABCDEF abcdefg 0123456789 &?!\$.€
Bookman-Light	ABCDEF abcdefg 0123456789 &?!\$.€
Bookman-LightItalic	ABCDEF abcdefg 0123456789 &?!\$.€
Carta	*!@#%&'()*+,-./:;<=>?[]^_`{ }~ 0123456789 &?!\$.€
Chicago	ABCDEF abcdefg 0123456789 &?!\$.€
Clarendon	ABCDEF abcdefg 0123456789 &?!\$.€
Clarendon-Bold	ABCDEF abcdefg 0123456789 &?!\$.€
Clarendon-Light	ABCDEF abcdefg 0123456789 &?!\$.€
CooperBlack	ABCDEF abcdefg 0123456789 &?!\$.€
CooperBlack-Italic	ABCDEF abcdefg 0123456789 &?!\$.€
Copperplate-ThirtyThreeBC	ABCDEF abcdefg 0123456789 &?!\$.€
Copperplate-ThirtyTwoBC	ABCDEF abcdefg 0123456789 &?!\$.€
Coronet-Regular	ABCDEF abcdefg 0123456789 &?!\$.€
Courier	ABCDEF abcdefg 0123456789 &?!\$.€
Courier-Bold	ABCDEF abcdefg 0123456789 &?!\$.€
Courier-BoldOblique	ABCDEF abcdefg 0123456789 &?!\$.€
Courier-Oblique	ABCDEF abcdefg 0123456789 &?!\$.€
Eurostile	ABCDEF abcdefg 0123456789 &?!\$.€
Eurostile-Bold	ABCDEF abcdefg 0123456789 &?!\$.€
Eurostile-BoldExtendedTwo	ABCDEF abcdefg 0123456789 &?!\$.€
Eurostile-ExtendedTwo	ABCDEF abcdefg 0123456789 &?!\$.€
Geneva	ABCDEF abcdefg 0123456789 &?!\$.€
GillSans	ABCDEF abcdefg 0123456789 &?!\$.€
GillSans-Bold	ABCDEF abcdefg 0123456789 &?!\$.€
GillSans-BoldCondensed	ABCDEF abcdefg 0123456789 &?!\$.€
GillSans-BoldItalic	ABCDEF abcdefg 0123456789 &?!\$.€
GillSans-Condensed	ABCDEF abcdefg 0123456789 &?!\$.€
GillSans-ExtraBold	ABCDEF abcdefg 0123456789 &?!\$.€
GillSans-Italic	ABCDEF abcdefg 0123456789 &?!\$.€
GillSans-Light	ABCDEF abcdefg 0123456789 &?!\$.€
GillSans-LightItalic	ABCDEF abcdefg 0123456789 &?!\$.€
Goudy	ABCDEF abcdefg 0123456789 &?!\$.€
Goudy-Bold	ABCDEF abcdefg 0123456789 &?!\$.€
Goudy-BoldItalic	ABCDEF abcdefg 0123456789 &?!\$.€
Goudy-ExtraBold	ABCDEF abcdefg 0123456789 &?!\$.€
Goudy-Italic	ABCDEF abcdefg 0123456789 &?!\$.€
GreekMono737	ABCDEF abcdefg 0123456789 &?!\$.€
GreekMono737-Bold	ABCDEF abcdefg 0123456789 &?!\$.€
GreekMono737-BoldItalic	ABCDEF abcdefg 0123456789 &?!\$.€
GreekMono737-Italic	ABCDEF abcdefg 0123456789 &?!\$.€
GreekMono851	ABCDEF abcdefg 0123456789 &?!\$.€
GreekMono851-Bold	ABCDEF abcdefg 0123456789 &?!\$.€
GreekMono851-BoldItalic	ABCDEF abcdefg 0123456789 &?!\$.€
GreekMono851-Italic	ABCDEF abcdefg 0123456789 &?!\$.€
GreekMono8859-7	ABCDEF abcdefg 0123456789 &?!\$.€
GreekMono8859-7Bold	ABCDEF abcdefg 0123456789 &?!\$.€

Resident Fonts

Position	Font Name	Print Sample
1	Courier «Esc»(Symbol set«Esc»(s0p«pitch»h0s0b4099T	'ABCDEFGHabcdefgh0123456789&?!.,'
2	CG Times «Esc»(Symbol set«Esc»(s1p«size»v0s0b4101T	'ABCDEFGHabcdefgh0123456789&?!.,'
3	CG Times Bold «Esc»(Symbol set«Esc»(s1p«size»v0s3b4101T	'ABCDEFGHabcdefgh0123456789&?!.,'
4	CG Times Italic «Esc»(Symbol set«Esc»(s1p«size»v1s0b4101T	'ABCDEFGHabcdefgh0123456789&?!.,'
5	CG Times Bold Italic «Esc»(Symbol set«Esc»(s1p«size»v1s3b4101T	'ABCDEFGHabcdefgh0123456789&?!.,'
6	CG Omega «Esc»(Symbol set«Esc»(s1p«size»v0s0b4113T	'ABCDEFGHabcdefgh0123456789&?!.,'
7	CG Omega Bold «Esc»(Symbol set«Esc»(s1p«size»v0s3b4113T	'ABCDEFGHabcdefgh0123456789&?!.,'
8	CG Omega Italic «Esc»(Symbol set«Esc»(s1p«size»v1s0b4113T	'ABCDEFGHabcdefgh0123456789&?!.,'
9	CG Omega Bold Italic «Esc»(Symbol set«Esc»(s1p«size»v1s3b4113T	'ABCDEFGHabcdefgh0123456789&?!.,'
10	Coronet «Esc»(Symbol set«Esc»(s1p«size»v1s0b4116T	'ABCDEFGHabcdefgh0123456789&?!.,'
11	Clarendon Condensed «Esc»(Symbol set«Esc»(s1p«size»v4s3b4140T	'ABCDEFGHabcdefgh0123456789&?!.,'
12	Univers Medium «Esc»(Symbol set«Esc»(s1p«size»v0s0b4148T	'ABCDEFGHabcdefgh0123456789&?!.,'
13	Univers Bold «Esc»(Symbol set«Esc»(s1p«size»v0s3b4148T	'ABCDEFGHabcdefgh0123456789&?!.,'
14	Univers Medium Italic «Esc»(Symbol set«Esc»(s1p«size»v1s0b4148T	'ABCDEFGHabcdefgh0123456789&?!.,'
15	Univers Bold Italic «Esc»(Symbol set«Esc»(s1p«size»v1s3b4148T	'ABCDEFGHabcdefgh0123456789&?!.,'
16	Univers Medium Condensed «Esc»(Symbol set«Esc»(s1p«size»v4s0b4148T	'ABCDEFGHabcdefgh0123456789&?!.,'
17	Univers Bold Condensed «Esc»(Symbol set«Esc»(s1p«size»v4s3b4148T	'ABCDEFGHabcdefgh0123456789&?!.,'
18	Univers Medium Condensed Italic «Esc»(Symbol set«Esc»(s1p«size»v5s0b4148T	'ABCDEFGHabcdefgh0123456789&?!.,'

Resident Fonts

Position	Font Name	Print Sample
19	Univers Bold Condensed Italic «Esc»(Symbol set«Esc»(s1p«size»v5s3b4148T	' ABCDEFGGabcdefg0123456789&?!.,'
20	Antique Olive «Esc»(Symbol set«Esc»(s1p«size»v0s0b4168T	'ABCDEFGabcdefg0123456789&?!.,'
21	Antique Olive Bold «Esc»(Symbol set«Esc»(s1p«size»v0s3b4168T	' ABCDEFGGabcdefg0123456789&?!.,'
22	Antique Olive Italic «Esc»(Symbol set«Esc»(s1p«size»v1s0b4168T	' <i>ABCDEFGGabcdefg0123456789&?!.,'</i>
23	Garamond Antiqua «Esc»(Symbol set«Esc»(s1p«size»v0s0b4197T	'ABCDEFGabcdefg0123456789&?!.,'
24	Garamond Halbfett «Esc»(Symbol set«Esc»(s1p«size»v0s3b4197T	' ABCDEFGGabcdefg0123456789&?!.,'
25	Garamond Kursiv «Esc»(Symbol set«Esc»(s1p«size»v1s0b4197T	' <i>ABCDEFGGabcdefg0123456789&?!.,'</i>
26	Garamond Kursiv Halbfett «Esc»(Symbol set«Esc»(s1p«size»v1s3b4197T	' <i>ABCDEFGGabcdefg0123456789&?!.,'</i>
27	Marigold «Esc»(Symbol set«Esc»(s1p«size»v0s0b4297T	'ABCDEFGabcdefg0123456789&?!.,'
28	Albertus Medium «Esc»(Symbol set«Esc»(s1p«size»v0s1b4362T	' ABCDEFGGabcdefg0123456789&?!.,'
29	Albertus Extra Bold «Esc»(Symbol set«Esc»(s1p«size»v0s4b4362T	' ABCDEFGGabcdefg0123456789&?!.,'
30	Ryadh «Esc»(Symbol set«Esc»(s1p«size»v0s0b4859T	ABCDEFGabcdefg0123456789&?!.,'
31	Ryadh Bold «Esc»(Symbol set«Esc»(s1p«size»v0s3b4859T	ABCDEFGabcdefg0123456789&?!.,'
32	Malka «Esc»(Symbol set«Esc»(s1p«size»v0s0b16584T	ABCDEFGabcdefg0123456789&?!.,'
33	Malka Bold «Esc»(Symbol set«Esc»(s1p«size»v0s3b16584T	ABCDEFGabcdefg0123456789&?!.,'
34	Malka Italic «Esc»(Symbol set«Esc»(s1p«size»v1s0b16584T	<i>ABCDEFGabcdefg0123456789&?!.,'</i>
35	Dorit «Esc»(Symbol set«Esc»(s1p«size»v0s0b16585T	ABCDEFGabcdefg0123456789&?!.,'
36	Dorit Bold «Esc»(Symbol set«Esc»(s1p«size»v0s3b16585T	ABCDEFGabcdefg0123456789&?!.,'

Resident Fonts

Position	Font Name	Print Sample
37	Naamit «Esc»(Symbol set«Esc»(s1p«size»v0s0b16587T	ABCDEFgabcdefg0123456789&?!.,'
38	Naamit Bold «Esc»(Symbol set«Esc»(s1p«size»v0s3b16587T	ABCDEFgabcdefg0123456789&?!.,'
39	Arial «Esc»(Symbol set«Esc»(s1p«size»v0s0b16602T	'ABCDEFgabcdefg0123456789&?!.,'
40	Arial Bold «Esc»(Symbol set«Esc»(s1p«size»v0s3b16602T	'ABCDEFgabcdefg0123456789&?!.,'
41	Arial Italic «Esc»(Symbol set«Esc»(s1p«size»v1s0b16602T	'ABCDEFgabcdefg0123456789&?!.,'
42	Arial Bold Italic «Esc»(Symbol set«Esc»(s1p«size»v1s3b16602T	'ABCDEFgabcdefg0123456789&?!.,'
43	Times New Roman «Esc»(Symbol set«Esc»(s1p«size»v0s0b16901T	'ABCDEFgabcdefg0123456789&?!.,'
44	Times New Roman Bold «Esc»(Symbol set«Esc»(s1p«size»v0s3b16901T	'ABCDEFgabcdefg0123456789&?!.,'
45	Times New Roman Italic «Esc»(Symbol set«Esc»(s1p«size»v1s0b16901T	'ABCDEFgabcdefg0123456789&?!.,'
46	Times New Roman Bold Italic «Esc»(Symbol set«Esc»(s1p«size»v1s3b16901T	'ABCDEFgabcdefg0123456789&?!.,'
47	Helvetica «Esc»(Symbol set«Esc»(s1p«size»v0s0b24580T	'ABCDEFgabcdefg0123456789&?!.,'
48	Helvetica Bold «Esc»(Symbol set«Esc»(s1p«size»v0s3b24580T	'ABCDEFgabcdefg0123456789&?!.,'
49	Helvetica Oblique «Esc»(Symbol set«Esc»(s1p«size»v1s0b24580T	'ABCDEFgabcdefg0123456789&?!.,'
50	Helvetica Bold Oblique «Esc»(Symbol set«Esc»(s1p«size»v1s3b24580T	'ABCDEFgabcdefg0123456789&?!.,'
51	Helvetica Narrow «Esc»(Symbol set«Esc»(s1p«size»v4s0b24580T	'ABCDEFgabcdefg0123456789&?!.,'
52	Helvetica Narrow Bold «Esc»(Symbol set«Esc»(s1p«size»v4s3b24580T	'ABCDEFgabcdefg0123456789&?!.,'
53	Helvetica Narrow Oblique «Esc»(Symbol set«Esc»(s1p«size»v5s0b24580T	'ABCDEFgabcdefg0123456789&?!.,'
54	Helvetica Narrow Bold Oblique «Esc»(Symbol set«Esc»(s1p«size»v5s3b24580T	'ABCDEFgabcdefg0123456789&?!.,'

Resident Fonts

Position	Font Name	Print Sample
55	Palatino Roman «Esc»(Symbol set«Esc»(s1p«size»v0s0b24591T	'ABCDEFGabcdefg0123456789&?!.,'
56	Palatino Bold «Esc»(Symbol set«Esc»(s1p«size»v0s3b24591T	'ABCDEFGabcdefg0123456789&?!.,'
57	Palatino Italic «Esc»(Symbol set«Esc»(s1p«size»v1s0b24591T	'ABCDEFGabcdefg0123456789&?!.,'
58	Palatino Bold Italic «Esc»(Symbol set«Esc»(s1p«size»v1s3b24591T	'ABCDEFGabcdefg0123456789&?!.,'
59	ITC Avant Garde Book «Esc»(Symbol set«Esc»(s1p«size»v0s0b24607T	'ABCDEFGabcdefg0123456789&?!.,'
60	ITC Avant Garde DemiBold «Esc»(Symbol set«Esc»(s1p«size»v0s2b24607T	'ABCDEFGabcdefg0123456789&?!.,'
61	ITC Avant Garde Book Oblique «Esc»(Symbol set«Esc»(s1p«size»v1s0b24607T	'ABCDEFGabcdefg0123456789&?!.,'
62	ITC Avant Garde DemiBold Oblique «Esc»(Symbol set«Esc»(s1p«size»v1s2b24607T	'ABCDEFGabcdefg0123456789&?!.,'
63	ITC Bookman Light «Esc»(Symbol set«Esc»(s1p«size»v0s-3b24623T	'ABCDEFGabcdefg0123456789&?!.,'
64	ITC Bookman DemiBold «Esc»(Symbol set«Esc»(s1p«size»v0s2b24623T	'ABCDEFGabcdefg0123456789&?!.,'
65	ITC Bookman Light Italic «Esc»(Symbol set«Esc»(s1p«size»v1s-3b24623T	'ABCDEFGabcdefg0123456789&?!.,'
66	ITC Bookman DemiBold Italic «Esc»(Symbol set«Esc»(s1p«size»v1s2b24623T	'ABCDEFGabcdefg0123456789&?!.,'
67	New Century Schoolbook Roman «Esc»(Symbol set«Esc»(s1p«size»v0s0b24703T	'ABCDEFGabcdefg0123456789&?!.,'
68	New Century Schoolbook Bold «Esc»(Symbol set«Esc»(s1p«size»v0s3b24703T	'ABCDEFGabcdefg0123456789&?!.,'
69	New Century Schoolbook Italic «Esc»(Symbol set«Esc»(s1p«size»v1s0b24703T	'ABCDEFGabcdefg0123456789&?!.,'
70	New Century Schoolbook Bold Ital «Esc»(Symbol set«Esc»(s1p«size»v1s3b24703T	'ABCDEFGabcdefg0123456789&?!.,'
71	Times Roman «Esc»(Symbol set«Esc»(s1p«size»v0s0b25093T	'ABCDEFGabcdefg0123456789&?!.,'
72	Times Roman Bold «Esc»(Symbol set«Esc»(s1p«size»v0s3b25093T	'ABCDEFGabcdefg0123456789&?!.,'

Resident Fonts

Position	Font Name	Print Sample
91	Courier PS Bold «Esc»(Symbol set«Esc»(s0p«pitch»h0s3b24579T	' ABCDEFGG abcde fg 0123456789&?!.,'
92	Courier PS Oblique «Esc»(Symbol set«Esc»(s0p«pitch»h1s0b24579T	' <i>ABCDEFGG</i> abcde <i>fg</i> 0123456789&?!.,'
93	Courier PS Bold Oblique «Esc»(Symbol set«Esc»(s0p«pitch»h1s3b24579T	' <i>ABCDEFGG</i> abcde <i>fg</i> 0123456789&?!.,'
93	Line Printer «Esc»(8U«Esc»(s0p16.67h8.48v0s0b0T	'ABCDEFGabcde fg 0123456789&?!.,'

Save Big With Our Spring Sale

BOOST YOUR FLOWER POWER

April showers bring
May flowers—so get
yours blooming
today with 20%
off perennials
and annuals,
now through
June 1.



GET DIGGING...

... and weeding and clipping with
new garden tools and accessories.
We've got great deals on super-
sharp shears, shiny spades and
shovels, and gloves and clogs
to boot. But why stop there?
Don't forget to visit our
showroom of garden accents
featuring bird baths, windchimes,
gazing balls, even benches. You
won't want to go back indoors!



PLANT FOR WINGED WILDLIFE

Did you know that certain plants
attract hummingbirds,
butterflies, bluebirds
and other winged species?

Talk to our experts about how to
create a haven for these delicate
beauties. You'll be amazed by the
colorful new visitors who will come to
sample the pollen and alight on soft
flower petals.

ALPINE RIDGE
GARDEN  **CENTERS**

info@alpinegardencenter.com

THE ALPINE RIDGE APPROACH TO GARDENING

We're about sustainable gardening, embracing
growth without the use of chemicals. Our organic
compost replenishes the soil with natural nutrients.
We have plants that will help keep pesky insects
away, without the need for pesticides. Even our
containers are made of recycled paper products
that will nurture your plants. It's our pledge to
keep your gardens, lawns and all who visit them
free from pollutants and full of beauty.

xerox

Printed on a Xerox®, AltaLink® C8200 Series Color
Multi-function Printer. © 2023 Xerox Corporation. All rights
reserved. Xerox®, and AltaLink® are trademarks of Xerox
Corporation in the United States and/or other countries.
10/23 TSK-5073 BR27311 AC8PS-06UA

NEWSLETTER SIGN-UP

Sign up today for gardening
tips and member discounts
delivered to your email.



Supplies Usage

Consumables

1 Toner Cartridges



Black

Date Installed: Dec 29, 2023
 Reorder: 006R01742
 Estimated Pages Remaining: 35000
 (Based upon this toner cartridge's average coverage: 4%)

Life Remaining: 100%
 50%
 0%

Cyan

Date Installed: Aug 18, 2022
 Reorder: 006R01743
 Estimated Pages Remaining: 500
 (Based upon this toner cartridge's average coverage: 5%)

Life Remaining: 100%
 50%
 0%

Magenta

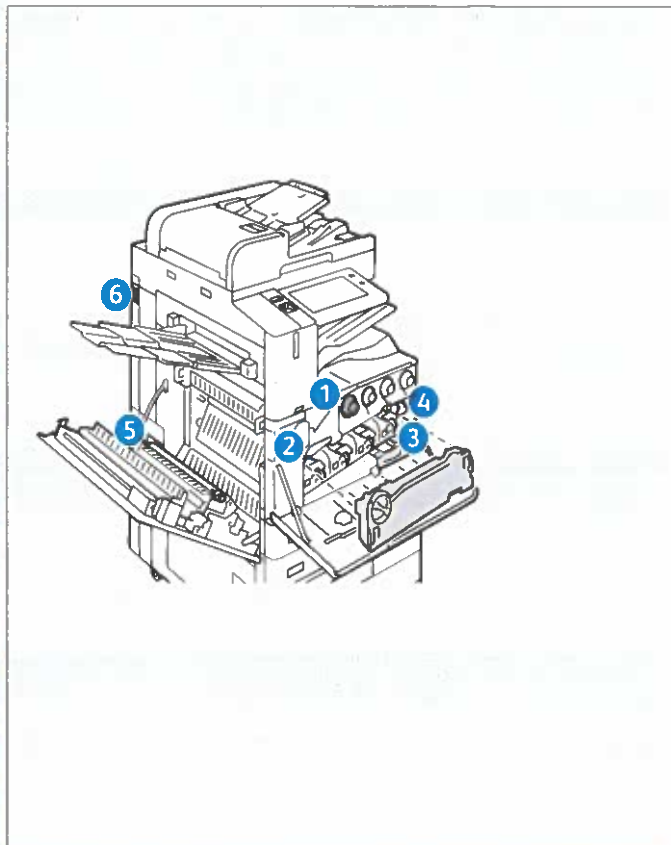
Date Installed: May 4, 2023
 Reorder: 006R01744
 Estimated Pages Remaining: 18000
 (Based upon this toner cartridge's average coverage: 3%)

Life Remaining: 100%
 50%
 0%

Yellow

Date Installed: Jun 15, 2022
 Reorder: 006R01745
 Estimated Pages Remaining: 5500
 (Based upon this toner cartridge's average coverage: 6%)

Life Remaining: 100%
 50%
 0%



Routine Maintenance Items

2 Drum Cartridge



Black (R1)

Date Installed: Nov 29, 2021
 Reorder: 013R00681
 Estimated Pages Remaining: 148500
 (Based on average printer job size: 1 Pages)

Life Remaining: 100%
 50%
 0%

Cyan (R2)

Date Installed: Dec 20, 2021
 Reorder: 013R00681
 Estimated Pages Remaining: 147000
 (Based on average printer job size: 1 Pages)

Life Remaining: 100%
 50%
 0%

Magenta (R3)

Date Installed: Feb 16, 2022
 Reorder: 013R00681
 Estimated Pages Remaining: 0
 (Based on average printer job size: 1 Pages)

Life Remaining: 100%
 50%
 0%

Yellow (R4)

Date Installed: Mar 7, 2022
 Reorder: 013R00681
 Estimated Pages Remaining: 69500
 (Based on average printer job size: 1 Pages)

Life Remaining: 100%
 50%
 0%

3 Waste Container



Date Installed: Unknown
 Reorder: 008R08102

OK

4 Transfer Belt Cleaner



Date Installed: Unknown
 Reorder: 001R00623
 Estimated Pages Remaining: 156500

Life Remaining: 100%
 50%
 0%

5 Second Bias Transfer Roller



Date Installed: Unknown
 Reorder: 008R08103
 Estimated Pages Remaining: 199996500

Life Remaining: 100%
 50%
 0%

6 Fan Filter



Date Installed: Feb 12, 2024
 Reorder: 008R08104
 Estimated Pages Remaining: 500000

Life Remaining: 100%
 50%
 0%

Troubleshooting Print Quality

Your Xerox® AltaLink® C8230/C8235/C8245/C8255/C8270 Color Multifunction Printer is designed to produce high-quality color prints consistently. If you observe print-quality problems, use the information on these pages to troubleshoot the problems. For detailed online support information, go to www.xerox.com/office/support.

CAUTION: The Xerox® warranty, Service Agreement, or Total Satisfaction Guarantee does not cover damage caused by using unsupported paper, transparencies, or other specialty media. The Total Satisfaction Guarantee is available in the United States and Canada. Coverage can vary outside of these areas. For details, contact your local representative.

Paper Type

CAUTION: If you change the type of paper in the tray, change the paper type at the control panel to match the paper in the tray. If you fail to change the paper type, it can cause print-quality problems and damage the fuser.

For the best results, only use recommended Xerox® paper and media. Xerox® paper and media are guaranteed to produce excellent results on your Xerox® AltaLink® C8230/C8235/C8245/C8255/C8270 Color Multifunction Printer. To order Xerox® paper and media, go to www.xerox.com/office/supplies.

For a complete list of recommended paper for your printer, go to:

- North America: www.xerox.com/rmlna
- Europe: www.xerox.com/rmleu

Solving Print-Quality Problems

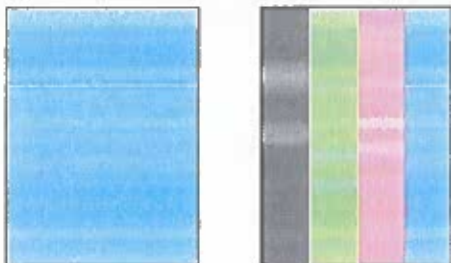
Use the following tables to find specific solutions to print-quality problems.

Note: The images that appear represent long-edge feed prints. If you print short-edge feed, the print-quality defects are rotated 90 degrees. The images that appear are for reference only. Not all pages represented are printed.

Solving Print-Quality Problems

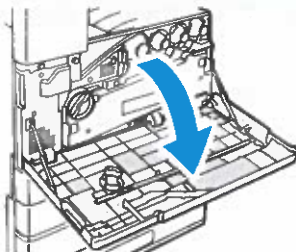
Problem

Light Lines or Streaks in One Color

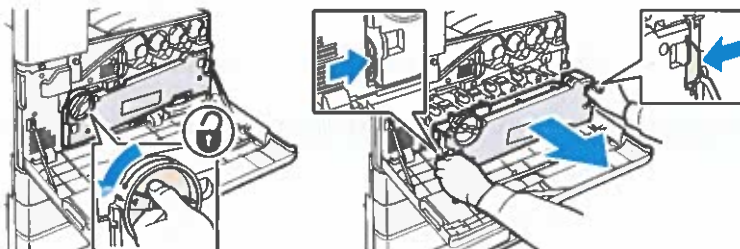


Solution

1. Open the front cover.

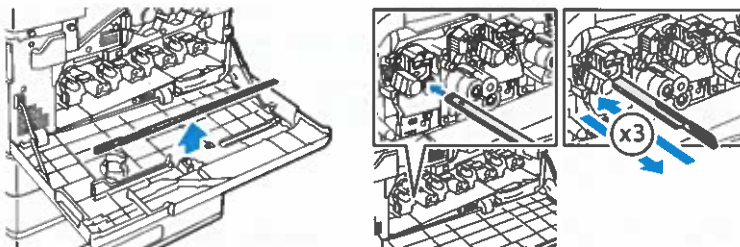


2. To unlock the belt tension lever, on the left side of the printer, rotate the belt tension lever, then open the drum cartridge cover.




3. Pull out the LED print head cleaner until it stops, then move it all the way in and out two or three times. Repeat this process for all four toner units.

Note: Ensure that you pull the LED print head cleaners out as far as they will go. Push them in as far as they will go. Do not use excessive force.






If the problem persists, check if the drum cartridge is causing the problem. To check, switch the suspected drum cartridge with another drum cartridge of a different color. If the problem occurs where you move the suspected drum cartridge, replace the suspected drum cartridge.


Solving Print-Quality Problems (continued)

Problem	Solution
<p data-bbox="103 396 312 423">Incomplete Fusing</p> <p data-bbox="103 434 592 495">Toner appears to be missing from the print, or rubs off easily.</p> 	<ol data-bbox="655 396 1410 456" style="list-style-type: none">1. Verify that the paper you are using is the correct type for the printer and is properly loaded. For a complete list of recommended paper for your printer, go to:<ul data-bbox="691 472 1378 577" style="list-style-type: none">– North America: www.xerox.com/rmlna– Europe: www.xerox.com/rmleu2. Verify that the paper type is selected on the control panel and in the print driver.3. If the problem persists, do one of the following:<ol data-bbox="691 701 1434 790" style="list-style-type: none">a. For dedicated trays, log in as admin, touch Device > Tools > Device Settings > Paper Management > Tray Settings. Select the tray, touch Edit, then change the paper type. Note: To change the size, type, or color of paper in a dedicated tray when the control panel is locked, log in as the system administrator.b. For trays that are set to Fully Adjustable:<ul data-bbox="727 913 1385 983" style="list-style-type: none">• Trays 1–4 and 6: Open, then close the selected paper tray.• Tray 5: Remove, then reinsert the paper.The control panel prompts you to confirm or change the paper type.c. At the touch screen, touch Type, then do one of the following:<ul data-bbox="727 1077 1390 1146" style="list-style-type: none">• Select the correct paper type, then touch Confirm.• Select the next heavier type of paper, then touch Confirm. Note: Paper types from lightest to heaviest are: <ul data-bbox="727 1200 1410 1326" style="list-style-type: none">• For uncoated paper: Plain, Lightweight Cardstock, Cardstock, and Heavyweight Cardstock.• For coated paper: Lightweight Glossy Cardstock, Glossy Cardstock, and Heavyweight Glossy Cardstock.

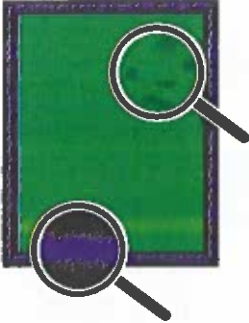

Solving Print-Quality Problems (continued)

Problem	Solution
<p data-bbox="102 360 309 389">Repeating Defects</p> <p data-bbox="102 400 560 521">Spots or lines appear at regular intervals on the page in the direction that the paper moves through the printer in all colors or in non-printed areas.</p>  <p data-bbox="102 831 564 920">Spots or lines appear at regular intervals on the page, in the direction the paper moves through the printer, and in one color only.</p> 	<ol data-bbox="655 360 1398 562" style="list-style-type: none">1. At the control panel, touch Device > Tools > Troubleshooting > Support Pages > Repeating Defects Page > Print. The Repeating Defects Page prints with instructions for identifying defective units.2. To correct the problem, replace items identified on the Repeating Defects Page.  <ol data-bbox="655 909 1437 1267" style="list-style-type: none">3. If you replaced the the transfer roller, reset the counter:<ol data-bbox="691 947 1437 1267" style="list-style-type: none">a. At the control panel, press Log In. Enter system administrator login information, then touch Enter. For details, refer to the <i>System Administrator Guide</i>.b. Touch Device > Tools > Device Settings.c. Scroll, then touch Supplies > Supply Counter Reset.d. Touch Second Bias Transfer Roll.e. Touch Reset Counter.f. To close the pop-up window, touch X, touch admin, then select Logout.

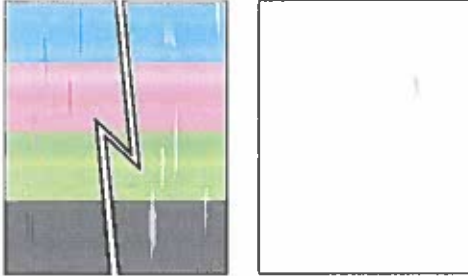
Solving Print-Quality Problems (continued)

Problem	Solution
<p>Offset Image</p> <p>The most common offset is toner that appears to be reprinted on the page and placed about 95 mm (3.75 in.) across the page in the direction that the paper moves through the printer.</p> <p>Note: For a different distance, use the Repeating Defects Page to identify the cause.</p> 	<ol style="list-style-type: none">1. Verify that the paper you are using is the correct paper type for the printer and is properly loaded. For a complete list of recommended paper for your printer, go to:<ul style="list-style-type: none">– North America: www.xerox.com/rmlna– Europe: www.xerox.com/rmleu2. Verify that the paper type is selected on the control panel and in the print driver. Note: To change the size, type, or color of paper in a dedicated tray when the control panel is locked, log in as the system administrator.3. If the problem continues, do one of the following:<ol style="list-style-type: none">a. For dedicated trays, log in as admin, touch Device > Tools > Device Settings > Paper Management > Tray Settings. Select the tray, touch Edit, then change the paper type.b. For trays that are set to Fully Adjustable:<ul style="list-style-type: none">• Trays 1–4 and 6: Open, then close the selected paper tray.• Tray 5: Remove, then reinsert the paper.The control panel prompts you to confirm or change the paper type.c. At the touch screen, touch Type, then do one of the following:<ul style="list-style-type: none">• Select the correct paper type, then touch Confirm.• Select the next heavier paper type, then touch Confirm.Note: Paper types from lightest to heaviest are:<ul style="list-style-type: none">• For uncoated paper: Plain, Lightweight Cardstock, Cardstock, and Heavyweight Cardstock.• For coated paper: Lightweight Glossy Cardstock, Glossy Cardstock, and Heavyweight Glossy Cardstock.d. To identify the cause, use the Repeating Defects Page. For details, refer to the previous page.

Solving Print-Quality Problems (continued)

Problem	Solution
<p>Heavy Coverage Appears Mottled or Blotchy Blacks Appear Blue</p> 	<ol style="list-style-type: none">1. Verify that the paper you are using is the correct type for the printer and is properly loaded. For a complete list of recommended paper for your printer, go to:<ul style="list-style-type: none">– North America: www.xerox.com/rmlna– Europe: www.xerox.com/rmleu2. Verify that the paper type is selected on the control panel and in the print driver. <p>If the problem continues, call for service.</p>
<p>Colors Align Incorrectly Color has shifted outside the designated area or is superimposed over another color.</p> 	<p>Open, then close the front door. The printer performs an automatic registration calibration with the next print.</p>
<p>All Colors Too Light or Too Dark Colors appear faded or too dark on print or copy.</p>	<ol style="list-style-type: none">1. Verify that the paper you are using is the correct type for the printer and is properly loaded. For a complete list of recommended paper for your printer, go to:<ul style="list-style-type: none">– North America: www.xerox.com/rmlna– Europe: www.xerox.com/rmleu2. Verify that the paper type is selected on the control panel and in the print driver.3. Calibrate the printer colors. The calibration procedure adjusts the printer color balance and lightness level. At the control panel, touch Device > Tools > Troubleshooting > Calibration > Print Calibration or Copy Calibration. Follow the onscreen instructions to run the calibration procedure. <p>Note: For information about changing the Lightness setting in the PostScript print driver for your operating system, refer to the <i>Printing</i> chapter of the <i>User Guide</i>.</p>

Solving Print-Quality Problems (continued)

Problem	Solution
<p data-bbox="102 344 400 371">Lines, Smudges, or Streaks</p> <p data-bbox="102 383 584 443">Dark or light marks appear on the page in all colors and/or in non-printed areas.</p> 	<ol data-bbox="655 344 1414 1256" style="list-style-type: none">1. Verify that the paper you are using is the correct type for the printer and is properly loaded. For a complete list of recommended paper for your printer, go to:<ul data-bbox="691 456 1378 524" style="list-style-type: none">- North America: www.xerox.com/rmlna- Europe: www.xerox.com/rmleu2. Verify that the paper type is selected on the control panel and in the print driver.3. If the problem persists, follow these steps:<ol data-bbox="691 651 1433 712" style="list-style-type: none">a. At the control panel, touch Device > Information Pages > Troubleshooting Print Quality Page > Print. The Repeating Defects Page prints with instructions for identifying defective units.b. To correct the problem, replace the items identified on the Repeating Defects Page.4. If the problem continues, replace the transfer belt cleaner. If you replace the transfer belt cleaner, reset the counter:<ol data-bbox="691 936 1433 1256" style="list-style-type: none">a. At the control panel, press Log In. Enter system administrator login information, then touch Done. For details, refer to the <i>System Administrator Guide</i>.b. Touch Device > Tools > Device Settings.c. Scroll, then touch Supplies > Supply Counter Reset.d. Touch Transfer Belt Cleaner.e. Touch Confirm Reset.f. To close the pop-up window, touch X, touch admin, then select Logout.

Solving Print-Quality Problems (continued)

Problem	Solution
<p>Poor Transparency Print Quality Print-quality defects are occurring on transparency film:</p> <ul style="list-style-type: none"> • Light or dark spots • Smearred toner • Light bands on print 	<p>Use only Xerox® Transparencies.</p> <p>CAUTION: Using non-Xerox® transparencies can cause print-quality problems or damage to the fuser. Damage caused by using unsupported media is not covered by the Xerox® Warranty, Service Agreement, or Total Satisfaction Guarantee.</p>
<p>Grays are Not Neutral The grays on the printed page are not neutral; they contain color tints.</p>	<p>Calibrate the printer colors. The calibration process adjusts the printer color balance.</p> <ol style="list-style-type: none"> 1. At the control panel, touch Device > Tools > Troubleshooting > Calibration > Print Calibration. 2. Follow the onscreen instructions to run the Print Calibration procedure.
<p>Colors Vary Between Computers The colors printed from one computer do not match the colors printed from a different computer.</p>	<ol style="list-style-type: none"> 1. Confirm that the print driver settings for Print Quality, Color Correction, and Color By Words are identical on both computers. 2. Adjust the settings as needed. <p>Note: Print driver settings override the settings that are made at the printer control panel.</p>
<p>Colors Do Not Match The color produced by the printer is different from the color that it must match.</p>	<p>For more information about color matching, go to the Online Support Assistant at www.xerox.com/office/support.</p>
<p>Printed Colors Do Not Match Monitor Colors The color produced by the printer looks different from the color that appears on the computer monitor.</p>	<p>To view information about color matching between the monitor and the printed document, go to the Online Support Assistant at www.xerox.com/office/support.</p>

Print-Quality Settings

The Print-Quality mode and Color Corrections options directly control the quality of your prints. You can change these settings in the print driver. Select the setting that is best suited for your print job.

Print-Quality Mode

- **Enhanced** mode is the general-purpose mode for crisp, bright color prints. Enhanced mode balances speed with quality.
- **High Resolution** mode is a high quality mode that creates fine lines and detail. High Resolution mode is recommended for vibrant, saturated color prints. High Resolution mode balances quality over speed.
- **Toner Saver** mode reduces the amount of toner used for print jobs and is useful for draft-quality output. Print quality is slightly lower than using Standard mode.

Color Corrections

Color corrections are available on the Image Options tab in the print driver. The Preview window appears on the right side of the Image Options tab. When the Preview check box is selected, color correction appear in the Preview window. Selecting and clearing the Preview check box allows you to compare the corrected image to the uncorrected image.

To adjust the color characteristics of your print job, select the Color Correction tab, then select options as needed.

- **Xerox Black and White Conversion** converts the colors to grayscale, producing a black and white print job. This setting is useful for creating black and white master documents for photocopying or faxing.
- **Color Correction** provides options to match the printer colors as closely as possible to colors on other devices, such as your computer screen or a printing press.
 - **Automatic** applies the best color correction to each graphic element of the document: text, artwork, and photographs.
 - **Simulate LCD Display** approximates the print job color to the colors on a LCD computer monitor.
 - **sRGB Display** approximates the print job color to an RGB (red, green, blue) display.
 - **None** removes all color correction. This option is the best choice when working with color specified within your application or operating system.
- **Xerox Automatic Color** applies the best color correction to each graphic element of the document, including text, artwork, and photographs.
- **Custom Automatic Color** provides more options for customizing colors in your print job. Use one selection to adjust the color of the text and graphics. Use the other selection to adjust the color correction applied to images. You can apply a wide range of color options to each element to simulate the outputs of different color devices.

To adjust colors using descriptive phrases, select the **Color By Words** tab. From the menus, select the phrases to build a sentence that describes the color adjustment that you want. You can build more than one sentence for the print job, affecting one color or an entire range of colors.

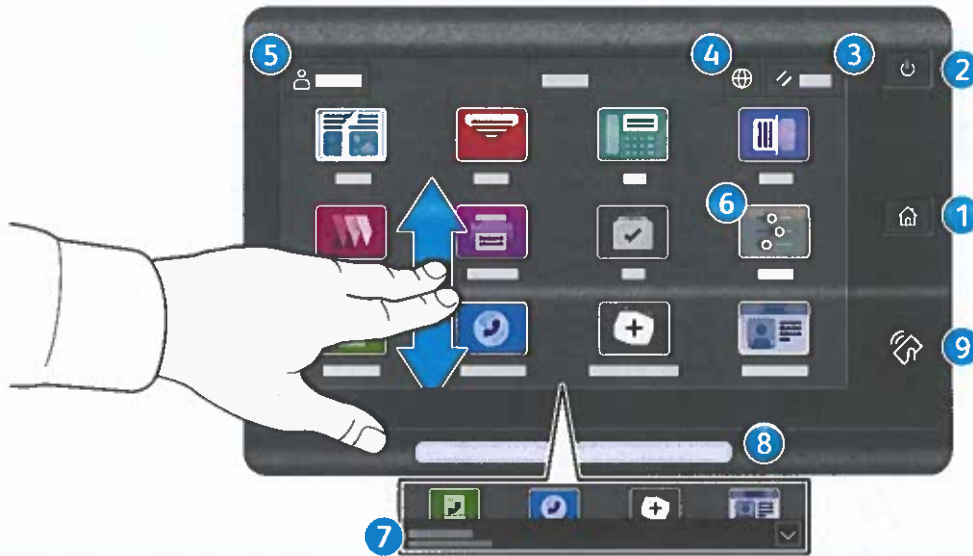
To change settings for each individual color parameter, select the **Color Adjustments** tab, then adjust the sliders. The sliders allow you to select a continuous range of adjustment for each of the following:

- Lightness
- Contrast
- Saturation
- Cyan to Red
- Magenta to Green
- Yellow to Blue

For more information on color matching and ICC profiles, go to www.xerox.com/office/support.

Control Panel

Available apps can vary based on your printer setup. For details about apps and features, refer to the *User Guide*.



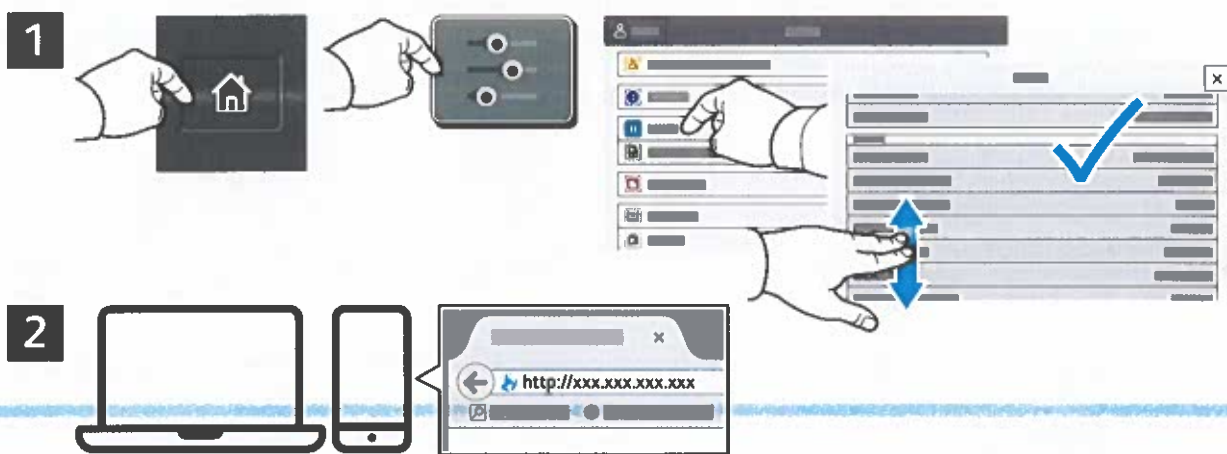
- 1 Home returns to the main app screen.
- 2 Power/Wake starts the printer or provides options to sleep, restart or power off the printer.
- 3 Reset restores settings to their default values in all apps.
- 4 Language provides choice of screen languages.
- 5 Log In provides special access to tools and settings.
- 6 Device app provides access to printer information and settings.
- 7 Notification banner shows printer status and warnings. To see all notifications, touch the banner. To close the banner, touch the down arrow.
- 8 Status LED indicates printer status. For detailed information, refer to the *User Guide*.
- 9 NFC Area allows pairing with a mobile device to print or scan from an app.

Embedded Web Server

The Xerox® Embedded Web Server enables you to access printer configuration details, paper and supplies status, job status, and diagnostic functions over a network. You can also manage fax, email, and address books.

To connect, in a Web browser, type the printer IP address. The network IPv4 address is available on the control panel touch screen. Touch **Device app > About**, then scroll down.

For details on using the Embedded Web Server, refer to the *User Guide* located on Xerox.com.



App Gallery

The Xerox App Gallery has a growing collection of productivity apps that you can install on your printer. Find the app on your home screen and create your login directly, or go to www.xerox.com/appgallery to log in and add your device. To simplify app installation, use the same name for your app gallery login credentials that you used for the printer login.



www.xerox.com/appgallery

Paper Handling

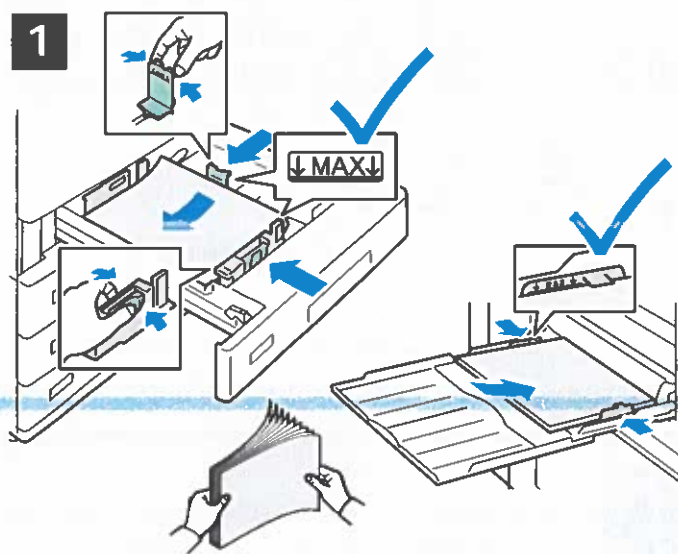
For a complete list of paper that works with your printer, see the Recommended Media List at:

www.xerox.com/rmlna (U. S. and Canada)

www.xerox.com/rmlEU (Europe)

For details about trays and paper, refer to the *User Guide*.

Loading Paper



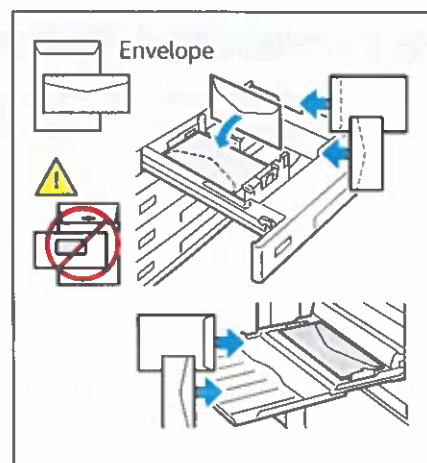
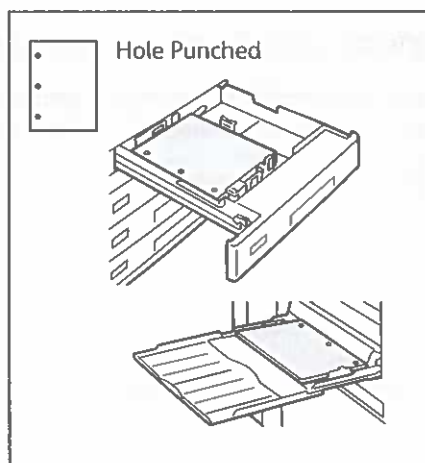
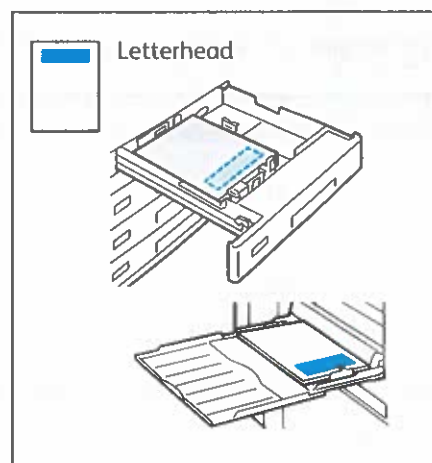
Confirm or change size, type, and color settings if needed.



For the best results, fan the edges of the paper. Adjust the guides to fit the paper size. Do not load paper above the maximum fill line.

When printing, select options in the print driver.

Paper Orientation



Scanning and Emailing

If the printer is connected to a network, you can select a destination for the scanned image at the printer control panel.

This guide defines techniques to scan documents without preparing special setups:

- Scanning documents to an email address.
- Scanning documents to a saved Favorite, Address Book listing, or USB Flash Drive.
- Scanning documents to the Default Public folder on the printer hard drive, and retrieving them using your Web browser.

For details and more scan setups, refer to the *User Guide*. For details about address book and workflow template setup, refer to the *System Administrator Guide*.

1



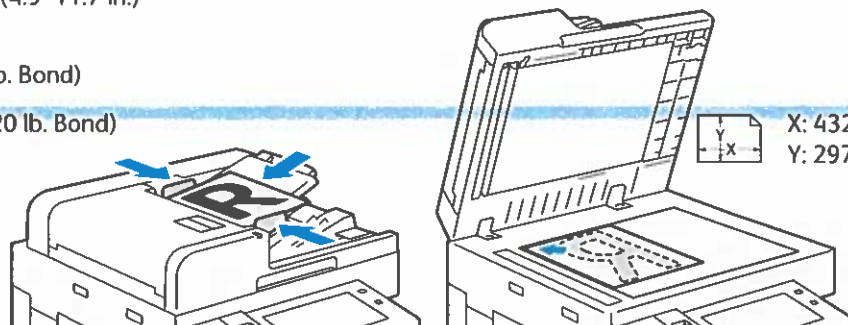
X: 85–432 mm (3.3–17 in.)
Y: 125–297 mm (4.9–11.7 in.)



38–128 g/m²
(26 lb. Text–34 lb. Bond)



≤130 (80 g/m², 20 lb. Bond)
C8270: ≤250



Load the original documents.

2



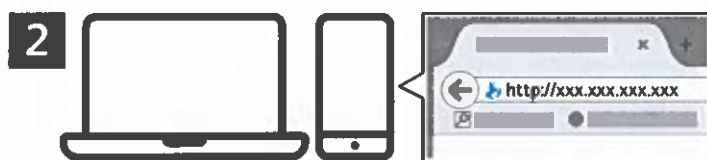
Press **Home**, then to email the scan, touch **Email**. To scan to the Default Public Folder or a USB Flash Drive, touch **Workflow Scanning**. If your scan destination is stored in the Address Book or saved as a Favorite, touch **Scan To**.

Retrieving Scan Files

To download your scanned images from the Default Public Folder on the printer, use the Embedded Web Server. You can set up personal folders and workflow scanning templates in the Embedded Web Server. For details, refer to the *User Guide*.



Note the printer IP address on the touch screen. If the IP Address does not appear in the top of the touch screen, press Home, touch **Device** > **About** then scroll to check the IP Address.



In a Web browser, type the printer IP address, then press Enter or Return.



Click the **Scan** tab.

Faxing


You can send a fax in one of four ways:


- **Fax** scans the document then sends it directly to a fax machine.
- **Server Fax** scans the document then sends it to a fax server, which transmits the document to a fax machine.
- **Internet Fax** scans the document then emails it to a recipient.
- **LAN Fax** sends the current print job as a fax.

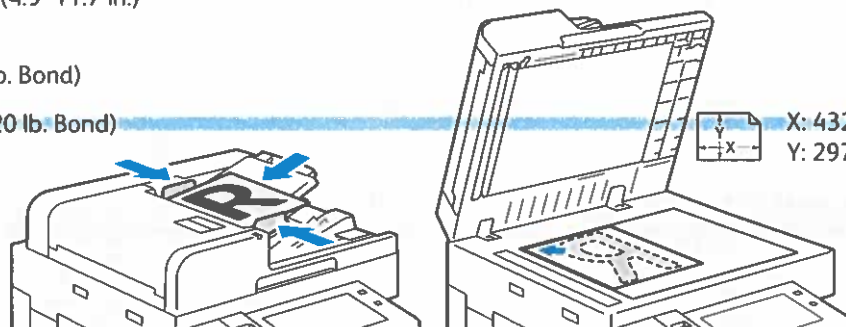
For details, refer to the *User Guide*. For details about LAN Fax, refer to the print driver software. For details about fax setup and advanced settings, refer to the *System Administrator Guide*.

1

 X: 85–432 mm (3.3–17 in.)
Y: 125–297 mm (4.9–11.7 in.)

 38–128 g/m²
(26 lb. Text–34 lb. Bond)

 ≤130 (80 g/m², 20 lb. Bond)
C8270: ≤250



 X: 432 mm (17 in.)
Y: 297 mm (11.7 in.)

Load the original document.

2

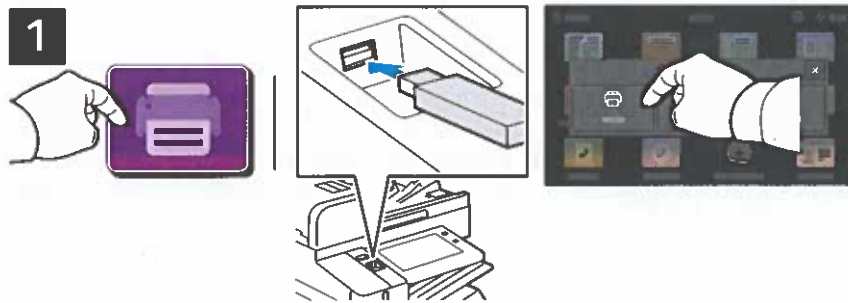


To send the fax to a fax machine, press **Home**, then touch **Fax** or **Server Fax**.

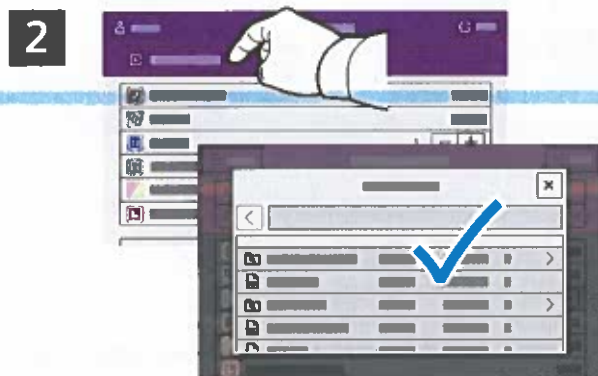
To send the fax as an email attachment, touch **Home**, then touch **Internet Fax**.

Printing from a USB Flash Drive

You can print .pdf, .tiff, .ps, .xps and other files types directly from a USB Flash Drive. For more information, refer to the *User Guide*.



Touch **Print From** or insert your USB Flash Drive, then choose **Print From USB**.



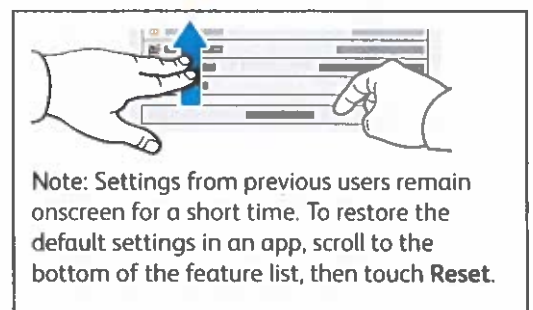
Touch **Add Document**, then navigate to your files and select them.



To select the number of copies, touch the plus sign (+) or the minus sign (-). For larger numbers, touch **Quantity** then enter a number.



Select settings as needed, then touch **Print**.



Billing Summary

System Information

Machine Name: Xerox AltaLink C8270 Color MFP (A2:1...
 Machine Serial Number: ZQZ654009
 Power On Impressions: 0

Software Versions
 Device Software: 121.040.004.03800
 Patch Version: None
 Network Controller: 121.040.03800
 UI Panel Firmware: 003.002.00000
 Marking Engine: 034.045.000
 Document Feeder: 001.035.000
 Finisher: 000.000.000
 Fax: 003.020.008
 Scanner: 017.023.006

Billing Meters

Fax

Embedded Fax Images Sent: 7
 Embedded Fax Impressions: 7

Copy

Black Copied Impressions: 2842
 Color Copied Impressions: 183

Print

Black Printed Impressions: 110
 Color Printed Impressions: 122

Scan

Network Scanning Images Sent: 48
 E-mail Images Sent: 9

Plain Paper: 3141
 Bond: 2
 Transparency: 4
 Preprinted: 1
 Labels: 1
 Envelope: 1
 Custom: 1

Device Totals

Black Impressions: 2990
 Color Impressions: 321
 Total Impressions: 3311

Common User Data

Machine Name: Xerox AltaLink C8270 Color MFP (A2.1...
 IP Address: 10.61.9.146
 Machine Serial Number: ZQZ654009
 Fax Line 1: 3338
 Machine URL: https://10.61.9.146
 Machine Activation Date: Jan 01, 1970 05:30:00
 Black Impressions: 2990
 Color Impressions: 321
 Total Impressions: 3311

Machine Profile

Xerox Asset Tag:
 Customer Asset Tag:
 Service Phone Number:
 Customer Support Number:
 Supplies Phone Number:
 System Administrator: System Administrator name not set
 Machine Location: machine location not set
Managed By
 Primary MB Server:

Machine Hardware

Fax Card: present
 Extended Fax Card: not present
 Fax Card Memory Size: 1936 MB
 Foreign Interface Card: not present
 Device RAM Size: 8192 MB
 Device Storage Size: used=3531MB/total=256060MB (SSD)
 EPC Memory Size: 1000 MB
 Finisher Type: Offsetting Catch Tray
 Finisher Punch: None
 Finisher Folder: not present
 Multi-feed Detection Kit: Installed

General Setup

Remote Services: Enabled
 Remote Software Download: Enabled
 Remote Services Trans. Time: 04:29
 Xerox Workplace Cloud: Disabled
 E-mail Alerts: Disabled
 Service Plan: Metered
 Billing Impression Mode: A3 Impressions
 Geographic Region: Western Hemisphere
 Startup Config Report: Disabled
 GMT Offset: +05:30
 Cloning Installation: Allowed (Encrypted Files Only)
 Allow Print Submission of Clone Files: Disabled
 File Sharing: Enabled
 Document Feeder Multi-feed Detection: Enabled
 JBIG2: Lossless

Energy Saver

Deep Sleep: Enabled
 Energy Saver Mode: Job Activated
 Sleep Mode Timer: 120 minutes
 Auto-Off: Disabled

Smart Proximity Sensor

Wake on Arrival: Enabled
 Sleep on Departure: Disabled
 Maximize Detection Range: Disabled

Software Versions

Device Software: 121.040.004.03800
 Patch Version: None
 Network Controller: 121.040.03800
 UI Panel Firmware: 003.002.00000
 User Interface: 121.040.03800
 Marking Engine: 034.045.000
 Copy Controller: 121.040.03800
 Document Feeder: 001.035.000
 Finisher: 000.000.000
 Fax: 003.020.008
 OS: 121.004.03800
 Scanner: 017.023.006
 Software Upgrade: 121.040.03800
 Tray 2:
 Tray 3:
 Tray 4:

Machine Upgrades:

Last Successful Upgrade: February 12, 2024 12:36:49
 Scheduled Auto Upgrades: Disabled
 Auto Upgrade Start Time: Daily
 Auto Upgrade Server: 0.0.0.0:21

Media Trays

Tray 1: Plain, White and A4 (210 x 297 mm)
 Tray 2: Plain, White and A3 (297 x 420 mm)
 Tray 3: Bond, White and Letter (8.5 x 11")
 Tray 4: Plain, White and Letter (8.5 x 11")
 Bypass Tray: Plain, White and x=105mm, y=241mm

Connectivity

Mobile Workflows

Mopria Printing Discovery: Enabled
 Mopria Scanning: Enabled
 Authentication: Disabled
 Universal Print: Disabled
 Universal Print Registration Status: Not Registered

Physical Connections

USB Settings
 Usb Type A Ports: All Enabled
 Printing Timeout: 5 seconds
Wired:
 Ethernet MAC Address: Enabled
 Ethernet Speed/Duplex Setting: 9c:93:4e:a2:1b:0b auto
Wireless:
 Wireless MAC Address: Disabled
 Network Name (SSID):
 BSSID:
 Security Mode:
 Encryption Algorithm:
 Status:
Wi-Fi Direct: Enabled
 Wireless Hardware: Not Installed
 Wi-Fi Protected Setup (WPS) Name:
 Connection Method:
 Subnet Prefix Address:
 Access Point (SSID):
 Show Password on Device Touch Screen:
NFC: Enabled

Protocols

TCP/IPV4:

Enabled
 IP Address: 10.61.9.146
 Subnet Mask: 255.255.255.0
 Router/Gateway: 10.61.9.1
 Automatic Addressing: DHCP
 DHCP Server: 10.61.13.223
 DHCP Lease Expiration: Tue Feb 20 17:28:24 2024
 BOOTP Broadcast: Disabled
 Self Assigned Address State: Enabled
 Self Assigned Address:

TCP/IPV6:

Enabled
 Link Local Address: fe80::9e93:4eff:fea2:1b0b
 Use Router Supplied Prefix: Enabled
 Stateless Global Address 1: fd00:0:2:109:9e93:4eff:fea2:1b0b
 Stateless Global Address 2:
 Manual Address:
 DHCP Addressing: Use DHCP as directed by a router
 DHCP Address: fd00:0:2:109:3ddc:24b8:1335:f486
 Default Gateway: fe80::8afc:5dff:fe75:e282
 DUID (DHCP Unique Identifier): 000100012d5e15df9c934ea21b0b

DNS Settings:

Requested Host Name: XRX9C934EA21B08
 Verified Host Name:
 Requested Domain Name:
 Verified Domain Name:
 Multicast DNS: Enabled
 Release DHCP Leases and DNS Registrati: Disabled
 Primary DNS Server: 10.61.7.15
 Alternate DNS Server 1: 10.61.13.20
 Alternate DNS Server 2:
 DNS Connection Timeout: 5
 Append Device Domain: Enabled
 Append Parent Domain: Disabled
 DNS Domain Search List: XEROXQA.COM
 Prefer IPv6 DNS over IPv4: Enabled

Installed Options

PS: Installed

Accounting

Accounting Mode: None
 Network Accounting: Disabled

Security**Authentication Configuration**

Machine UI Authentication: Locally on the Device
 Home: Unlocked
 Jobs: Unlocked
 Device: Unlocked
 Device Website Authentication: Locally on the Device
 Authorization: Locally on the Device
 Retrieve E-mail from LDAP: Enabled

Authentication Server:

Kerberos: Kerberos
 Kerberos Primary Realm:
 Kerberos Primary Address: 0.0.0.88
 Kerberos Alt 1 Realm:
 Kerberos Alt 1 Address: 0.0.0.88
 SMB NT Domain:
 SMB Alt 1 NT Domain:
 Smartcard Ctrl Server: 0.0.0.443
 Smartcard Ctrl Domain:
 SmartCard OCSP URL:
 Card Reader Upgrade Policy: Enabled
 Card Reader Firmware Version:

Xerox Secure Access:

Secure Access Server: Disabled
 Secure Access Path: 0.0.0.443

Audit Log:

Audit Log: Enabled

IP Sec:

IP Sec: Disabled

IP Filtering:

IP Filtering: Disabled

Security Certificates

Machine Certificate: Signed
 Root Certificates Installed: 55

802.1x:

802.1x: Disabled

Job Data Removal:

Scheduled: Disabled
 Scheduled Frequency: Monthly

FIPS 140-3:

FIPS 140-3: Disabled

TLS:

TLS Hash: TLS 1.1 and TLS 1.2
 SHA-1, SHA-256 and above

Trellix Embedded Control:

Trellix Embedded Control: Enhanced Security

Extensible Service Setup

Third Generation Browser: X3G_3.24.23_2.40.5_011_01.00.00
 Widget Version: v1.3.17 c8 20140613
 Widget Version: v25.04 g9 20240123

Common User Data

Machine Name: Xerox AltaLink C8270 Color MFP (A2 1...
 IP Address: 10.61.9.146
 Machine Serial Number: ZQZ654009
 Fax Line1: 3338
 Machine URL: https://10.61.9.146
 Machine Activation Date: Jan 01, 1970 05:30:00
 Black Impressions: 2990
 Color Impressions: 321
 Total Impressions: 3311

Machine Profile

Xerox Asset Tag:
 Customer Asset Tag:
 Service Phone Number:
 Customer Support Number:
 Supplies Phone Number:
 System Administrator: System Administrator name not set
 Machine Location: machine location not set
Managed By
 Primary MB Server:

Machine Hardware

Fax Card: present
 Extended Fax Card: not present
 Fax Card Memory Size: 1936 MB
 Foreign Interface Card: not present
 Device RAM Size: 8192 MB
 Device Storage Size: used=3531MB/total=256060MB (SSD)
 EPC Memory Size: 1000 MB
 Finisher Type: Offsetting Catch Tray
 Finisher Punch: None
 Finisher Folder: not present
 Multi-feed Detection Kit: Installed

General Setup

Remote Services: Enabled
 Remote Software Download: Enabled
 Remote Services Trans. Time: 04:29
 Xerox Workplace Cloud: Disabled
 E-mail Alerts: Disabled
 Service Plan: Metered
 Billing Impression Mode: A3 Impressions
 Geographic Region: Western Hemisphere
 GMT Offset: +05:30
 Cloning Installation: Allowed (Encrypted Files Only)
 File Sharing: Enabled
 JBIG2: Lossless
Energy Saver
 Deep Sleep: Enabled
 Energy Saver Mode: Job Activated
Smart Proximity Sensor
 Wake on Arrival: Enabled
 Sleep on Departure: Disabled

Software Versions

Device Software: 121.040.004.03800
 Patch Version: None
 Network Controller: 121.040.03800
 UI Panel Firmware: 003.002.00000
 Marking Engine: 034.045.000
 Document Feeder: 001.035.000
 Finisher: 000.000.000
 Fax: 003.020.008
 Scanner: 017.023.006
Machine Upgrades:
 Last Successful Upgrade: February 12, 2024 12:36:49

Media Trays

Tray 1: Plain, White and A4 (210 x 297 mm)
 Tray 2: Plain, White and A3 (297 x 420 mm)
 Tray 3: Bond, White and Letter (8.5 x 11")
 Tray 4: Plain, White and Letter (8.5 x 11")
 Bypass Tray: Plain, White and x=105mm, y=241mm

Installed Options

PS: Installed

Connectivity

Mobile Workflows
 Mopria Printing Discovery: Enabled
 Mopria Scanning Authentication: Enabled
Physical Connections
USB Settings
 Usb Type A Ports: All Enabled
Wired:
 Ethernet MAC Address: Enabled
 Ethernet Speed/Duplex Setting: 9c:93:4e:a2:1b:0b
 auto
 Disabled
Wireless:
 Wireless MAC Address:
 Network Name (SSID):
 BSSID:
 Security Mode:
 Encryption Algorithm:
 Status: Enabled
Wi-Fi Direct:
 Wireless Hardware: Not Installed
 Wi-Fi Protected Setup (WPS) Name:
 Access Point (SSID):
 Show Password on Device Touch Screen:
 NFC: Enabled

Protocols

TCP/IPV4:
 IP Address: Enabled
 10.61.9.146
 Subnet Mask: 255.255.255.0
 Router/Gateway: 10.61.9.1
 Automatic Addressing: DHCP
 DHCP Server: 10.61.13.223
 DHCP Lease Expiration: Tue Feb 20 17:28:24 2024
 BOOTP Broadcast: Disabled
 Self Assigned Address State: Enabled
 Self Assigned Address:
TCP/IPV6:
 Link Local Address: Enabled
 fe80::9e93:4eff:fea2:1b0b
 Use Router Supplied Prefix: Enabled
 Stateless Global Address 1: fd00:0:2:109:9e93:4eff:fea2:1b0b
 Stateless Global Address 2: ::
 Manual Address:
 DHCP Addressing: Use DHCP as directed by a router
 DHCP Address: fd00:0:2:109:3ddc:24b8:1335:f486
 Default Gateway: fe80::8af:c5dff:fe75:e282
 DUID (DHCP Unique Identifier): 000100012d5e15df9c934ea21b0b
DNS Settings:
 Requested Host Name: XRX9C934EA21B0B
 Verified Host Name:
 Requested Domain Name:
 Verified Domain Name:
 Multicast DNS: Enabled
 Release DHCP Leases and DNS Registrati...: Disabled
 Primary DNS Server: 10.61.7.15
 Prefer IPv6 DNS over IPv4: Enabled
Bonjour:
 Bonjour Printer Name: Xerox AltaLink C8270 Color MFP (A2:1...
HTTP:
 Force Traffic over Secure Connection (H...: Enabled
 IPP: Yes
SNMP
 SNMP v1/v2: Enabled
 SNMP v3: Disabled
LPR/LPD:
 Enabled
Raw IP Printing:
 Enabled
LDAP
 LDAP Server 1 Primary LDAP Address: 0.0.0.389
 LDAP Server 1 Search Directory Root:
 LDAP Server 1 Secure Connection (LDA...: Disabled
 LDAP Server 1 Validate Server Certificate...: Disabled
SMTP
 SMTP Server: 10.61.23.93:25
 Connect Encryption (TLS): No Encryption
 Validate Server Certificate (TLS):