

Device RAM Size: 8192 MB
 Device Storage Size: used=3603MB/total:255060MB (SSD)
 EPC Memory Size: 1000 MB
 Finisher Type: BR Booklet Maker Finisher
 Finisher Punch: 2/4 Hole
 Finisher Folder: C Fold/Z Fold Unit
 Multi-feed Detection Kit: Installed

General Setup

Remote Services:
 Remote Software Download: Enabled
 Remote Services Trans. Time: 14:10
 Xerox Workplace Cloud: Disabled
 E-mail Alerts: Disabled
 Service Plan: Metered
 Billing Impression Mode: A3 Impressions
 Geographic Region: unknown
 GMT Offset: +0200
 Cloning Installation: Allowed (Encrypted Files Only)
 File Sharing: Enabled
 JBIG2: Lossless
Energy Saver
 Deep Sleep: Enabled
 Energy Saver Mode: Job Activated
Smart Proximity Sensor
 Wake on Arrival: Enabled
 Sleep on Departure: Disabled

Software Versions

Device Software: 120.040.103.34/700
 Patch Version: None
 Network Controller: 120.040.34/700
 UI Panel Firmware: 003.002.000000
 Marking Engine: 034.045.000
 Document Feeder: 001.035.000
 Finisher: 005.003.000
 Fax: 000.000.000
 Scanner: 017.022.004
Machine Upgrades: Not Allowed
 Last Successful Upgrade: December 18, 2023 12:55:54

Media Trays

Tray 1: Plain, White and Legal (8.5 x 14")
 Tray 2: Plain, White and Tabloid (11 x 17")
 Tray 3: Plain, White and A4 (210 x 297 mm)
 Tray 4: Plain, White and Letter (8.5 x 11")
 Bypass Tray: Labels, White and A4 (210 x 297 mm)

Installed Options

PS: Installed

Router/Gateway: 10.61.16.1
 Automatic Addressing: DHCP
 DHCP Server: 10.61.13.223
 DHCP Lease Expiration: Tue Dec 26 13:50:03 2023
 BOOTP Broadcast: Disabled
 Self Assigned Address State: Enabled
 Self Assigned Address: Enabled

TCP/IPV6:

Link Local Address: Enabled
 Use Router Supplied Prefix: fe80::9e93:4eff:fe02:1b0b
 Stateless Global Address 1: Enabled
 Stateless Global Address 2: fd00:0:2:116:9e93:4eff:fe02:1b0b
 Manual Address: ::
 DHCP Addressing: Use DHCP as directed by a router
 DHCP Address: fe80::8dfc:5dff:fe75:e282

DNS Settings:

Default Gateway: XeroxGC934EA21B08
 DUID (DHCP Unique Identifier):
 Requested Host Name:
 Verified Host Name:
 Requested Domain Name:
 Verified Domain Name:
 Multicast DNS: Enabled
 Release DHCP Leases and DNS Registrati... Disabled
 Primary DNS Server: 10.61.7.15
 Prefer IPv6 DNS over IPv4: Enabled

Bonjour:

Bonjour Printer Name: Xerox Alvalink C8270 Color MFP (A2:1...
HTTP: Enabled
 Force Traffic over Secure Connection (H... Yes
 IPP: Enabled

SNMP

SNMP v1 M2: Enabled
 SNMP v3: Disabled
 LPR/LPD: Enabled
Raw IP Printing: Enabled
LDAP
 LDAP Server 1 Primary/LDAP Address: 0.0.0.0:389
 LDAP Server 1 Search Directory Root: Disabled
 LDAP Server 1 Secure Connection (LDA... Disabled
 LDAP Server 1 Validate Server Certificate... Disabled

SMTP

SMTP Server: 0.0.0.0:25
 Connect Encryption (TLS): No Encryption
 Validate Server Certificate (TLS):

Device RAM Size: 8192 MB
 Device Storage Size: Used= 3603MB/total= 256060MB (SSD)
 EPC Memory Size: 1000 MB
 Finisher Type: BR Booklet Maker Finisher
 Finisher Punch: 2/4 Hole
 Finisher Folder: C Fold/Z Fold Unit
 Multi-feed Detection Kit: Installed

General Setup

Remote Services:
 Remote Software Download: Enabled
 Remote Services Trans. Time: 14:10
 Xerox Workplace Cloud: Disabled
 E-mail Alerts: Disabled
 Service Alert: Metered
 Billing Impression Mode: A3 Impressions
 Geographic Region: unknown
 Startup Config Report: Enabled
 GMT Offset: +02:00
 Cloning Installation: Allowed (Encrypted Files Only)
 Allow Print Submission of Clone Files: Disabled
 File Sharing: Enabled
 Document Feeder Multi-feed Detection: Enabled
 JBIG2: Lossless

Energy Saver

Deep Sleep: Enabled
 Energy Saver Mode: Job Activated
 Sleep Mode Timer: 120 minutes
 Auto-Off: Disabled

Smart Proximity Sensor

Wake on Arrival: Enabled
 Sleep on Departure: Disabled
 Maximize Detection Range: Disabled

Software Versions

Device Software: 120.040.103.34700
 Patch Version: None
 Network Controller: 120.040.34700
 UI Panel Firmware: 003.002.00000
 User Interface: 120.040.34700
 Marking Engine: 034.045.000
 Copy Controller: 120.040.34700
 Document Feeder: 001.035.000
 Finisher: 006.003.000
 Fax: 000.000.000
 OS: 120.103.34700
 Scanner: 017.022.004
 Software Upgrade: 120.040.34700
 Tray 2:
 Tray 3:
 Tray 4:

Machine Upgrades

Last Successful Upgrade: Not Allowed
 Scheduled Auto Upgrades: December 18, 2023 12:55:54
 Auto Upgrade Start Time: Disabled
 Auto Upgrade Server: Daily
 0:00:0:21

Media Trays

Tray 1: Plain, White and Legal (8.5 x 14")
 Tray 2: Plain, White and Tabloid (11 x 17")
 Tray 3: Plain, White and A4 (210 x 297 mm)
 Tray 4: Plain, White and Letter (8.5 x 11")
 Bypass Tray: Labels, White and A4 (210 x 297 mm)

ENABLED

Protocols

TCP/IPV4:
 IP Address: Enabled
 10.61.1.6.61
 Subnet Mask: 255.255.255.0
 10.61.1.6.1
 Router/Gateway: DHCP
 Automatic Addressing: 10.61.1.3.223
 DHCP Server: Tue Dec 26 13 50:03 2023
 DHCP Lease Expiration: Disabled
 BOOTP Broadcast: Disabled
 Self Assigned Address State: Enabled
 Self Assigned Address: Enabled

TCP/IPV6

Link Local Address: Enabled
 fe80::9e93:4eff:fe02::1:b0b
 Use Router Supplied Prefix: Enabled
 Stateless Global Address 1: fe00::0:2:116:9e93:4eff:fe02:1:b0b
 Stateless Global Address 2: ::
 Manual Address: Use DHCP as directed by a router
 DHCP Addressing: fe80::80fc:5dff:fe75:e282
 DHCP Address: fe80::80fc:5dff:fe75:e282
 Default Gateway: XRX9C934E421B08
 DUID (DHCP Unique Identifier):

DNS Settings

Requested Host Name: XRX9C934E421B08
 Verified Host Name:
 Requested Domain Name:
 Verified Domain Name:
 Multicast DNS:
 Release DHCP Leases and DNS Registrati...:
 Primary DNS Server:
 Alternate DNS Server 1:
 Alternate DNS Server 2:
 DNS Connection Timeout:
 Append Device Domain:
 Append Parent Domains:
 DNS Domain Search List:
 Prefer IPv6 DNS over IPv4:
 Enabled
 Disabled
 10.61.7.15
 10.61.13.20
 ::
 5
 Enabled
 Disabled
 XEROXQA.COM
 Enabled

Installed Options

PS: Installed

Secure Access Path:

Audit Log:

IP Sec:

IP Filtering:

Security Certificates

Machine Certificate:

Root Certificates Installed:

802.1X:

Authentication Method:

Job Data Removal:

Scheduled:

Scheduled Frequency:

FIPS 140-3:

TLS:

TLS Host:

Trellix Embedded Control:

Enabled

Disabled

Disabled

Signed

54

Disabled

EAP-MS-CHAPv2

Disabled

Monthly

Disabled

TLS 1.1 and TLS 1.2

SHA-1, SHA-256 and above

Enhanced Security

Extensible Service Setup

Third Generation Browser:

Widget Version:

Widget Version:

X3G_3.26.23.2324.011_01.00.00

V1.3.17 c8 20140613

v2.5.02 99 20220901

Transparency: 3
Labels: 3

Fax
Embedded Fax Images Sent: 0
Embedded Fax Impressions: 0

Copy
Black Copied Impressions: 45
Color Copied Impressions: 6

Print
Black Printed Impressions: 87
Color Printed Impressions: 134

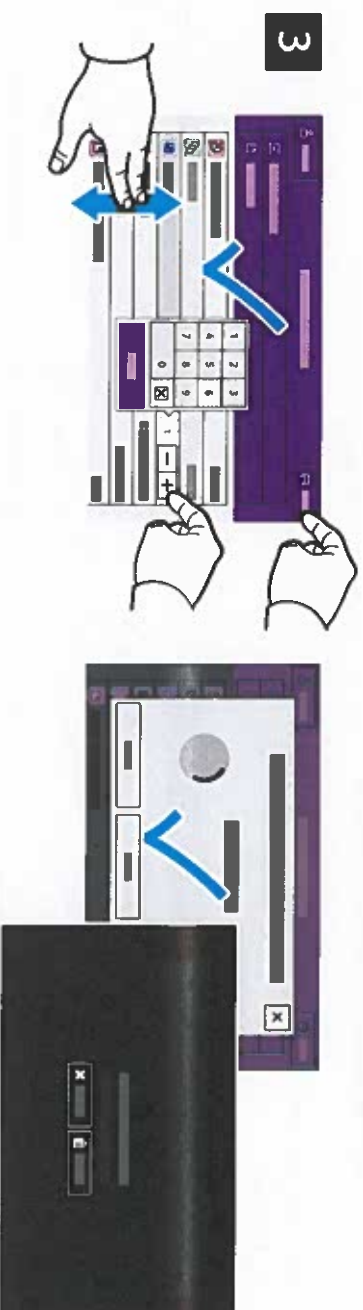
Scan
Network Scanning Images Sent: 21
E-mail Images Sent: 1

Device Totals
Black Impressions: 137
Color Impressions: 140
Total Impressions: 277

select **Properties** (Windows) or **Xerox Features** (Mac OS), then **Job Type**. Select **Saved Job** or **Secure Print**. For **Secure Print**, type a passcode. Click **OK** and print the job.



Touch **Print From** then touch **Saved Jobs**. Select the **Default Public Folder** then select your print job.



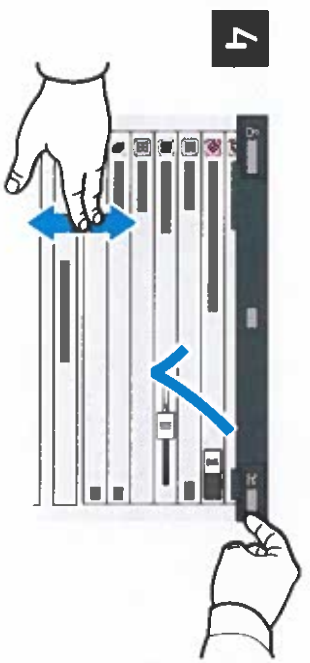
Select settings from the list. To select the number of copies, touch the plus sign (+) or the minus sign (-). For larger numbers, touch **Quantity** then enter a number. Touch **Print**. To delete the job, in the printing screen and confirmation screen, touch **Delete**.



For fax numbers, touch **Manual Entry**, then enter the fax number using the touch screen alphanumeric keys and special characters. Touch **Add**. To add more fax numbers to the list, touch **Add Recipient**.

For Internet Fax email addresses, touch **Manual Entry**, then enter the email address using the touch screen keypad. Touch **Add**. To add more email addresses to the list, touch **Add Recipient**.


To select saved numbers, use the Device Address Book or Favorites. To select stored fax locations, use the Mailbox or Polling.



Change the settings as needed, then touch **Send**.

Note: Settings from previous users remain onscreen for a short time. To restore the default settings in an app, scroll to the bottom of the feature list, then touch **Reset**.

Select the **Default Public Folder**, then find your scan in the list. To download the scan, click **Go**.



The screenshot shows a table of scan jobs. Each row represents a scan job and includes several columns: a checkbox, a status icon, a file name, a date, and a 'Go' button. Below the table, there are three buttons: 'Update View', 'Download', and 'Delete'. Arrows point from the text instructions to these buttons.

To refresh the list, click **Update View**.

To save the file to your computer, select **Download**.

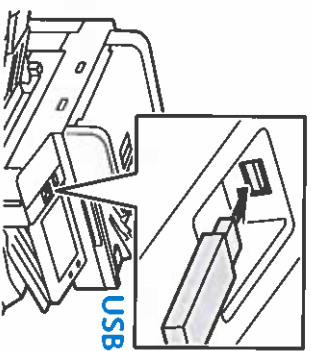
To print the saved file again, select **Reprint**.

To permanently remove the stored job, select **Delete**.

To open a directory, select **Open**.

For Email, touch **Manual Entry**, type the email address using the touch screen keypad, then touch **Add**. To add more than one email address to the list, touch **Add Recipient**. To type a subject line for the email, touch **Subject**. To select saved email addresses, use the Device Address Book or select from Favorites.

For Workflow Scanning, touch **Default Public Folder**, or insert your USB Flash Drive.



For Scan To, touch a destination type, then enter the appropriate information. To add more than one destination to the list, touch **Add Destination**.

4

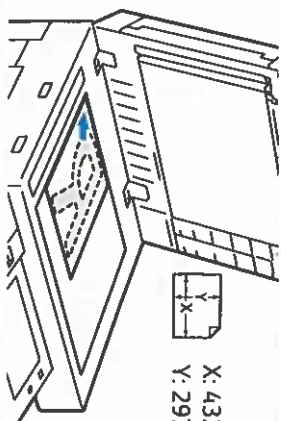


Change the settings as needed, then touch **Scan**, or for Email, touch **Send**.

Note: Settings from previous users remain onscreen for a short time. To restore the default settings in an app, scroll to the bottom of the feature list, then touch **Reset**.

(26 lb. Text–34 lb. Bond)

≤130 (80 g/m², 20 lb. Bond)
C8270: ≤250



X: 432 mm (17 in.)
Y: 297 mm (11.7 in.)

Load the original documents.

2




Touch **Copy**, then and select the number of copies.

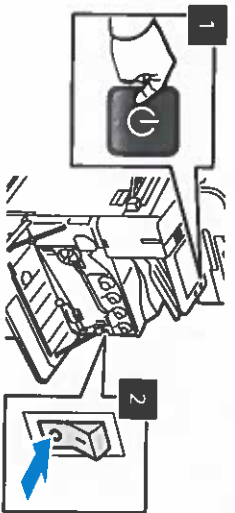
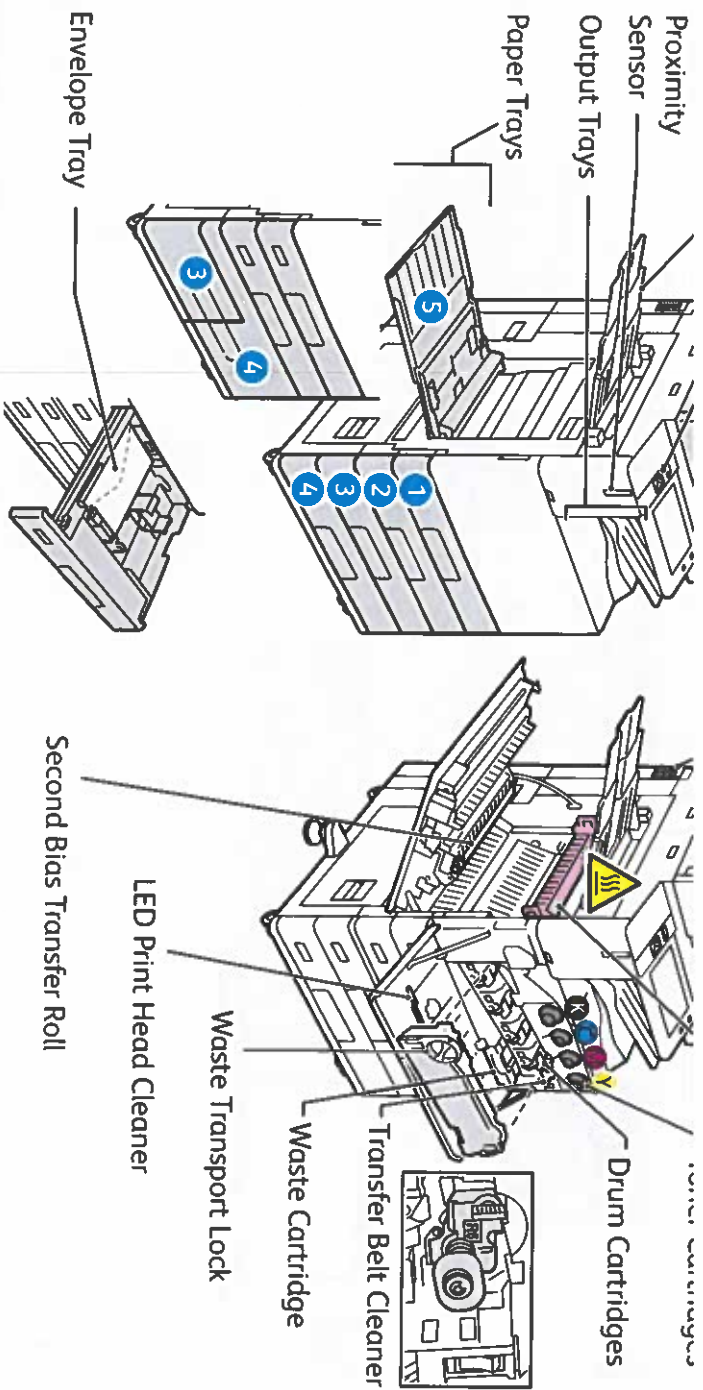
3



Select feature settings from the list, then touch **Start**.



Note: Settings from previous users remain onscreen for a short time. To restore the default settings in an app, scroll to the bottom of the feature list and touch **Reset**.



To restart the printer, on the control panel, press the **secondary power switch (1)**.

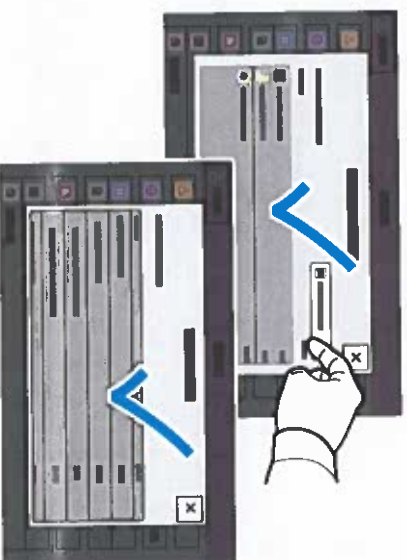
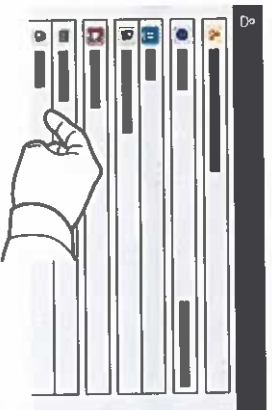
For full printer power off, press the **secondary power switch (1)**. Behind the front cover, press the **main power switch (2)**.

To select sleep mode, press the **secondary power switch (1)**. At the printer control panel touch screen, touch a selection.



Billing and Usage Information

In the Device features menu, to view basic impression counts, touch **Billing/Usage**. To view detailed usage counts, touch **Usage Counters**. The list provides detailed impression count categories.



tray. If you fail to change the paper type, it can cause print-quality problems and damage the fuser.

For the best results, only use recommended Xerox® paper and media. Xerox® paper and media are guaranteed to produce excellent results on your Xerox® Altalink® C8230/C8235/C8245/C8255/C8270 Color Multifunction Printer. To order Xerox® paper and media, go to www.xerox.com/office/supplies.

For a complete list of recommended paper for your printer, go to:

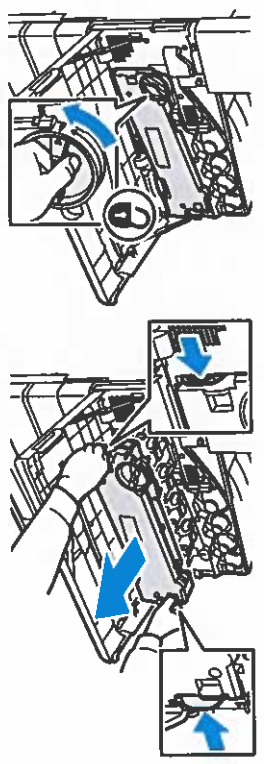
- North America: www.xerox.com/rmlna
- Europe: www.xerox.com/rmleu

Solving Print-Quality Problems

Use the following tables to find specific solutions to print-quality problems.

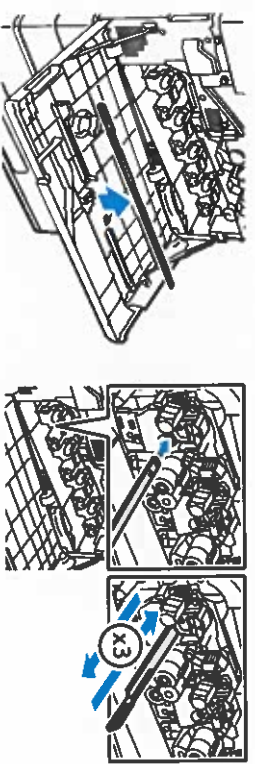
Note: The images that appear represent long-edge feed prints. If you print short-edge feed, the print-quality defects are rotated 90 degrees. The images that appear are for reference only. Not all pages represented are printed.

4. To unlock the belt tension lever, on the left side of the printer, move the belt tension lever, then open the drum cartridge cover.



3. Pull out the LED print head cleaner until it stops, then move it all the way in and out two or three times. Repeat this process for all four toner units.

Note: Ensure that you pull the LED print head cleaners out as far as they will go. Push them in as far as they will go. Do not use excessive force.



If the problem persists, check if the drum cartridge is causing the problem. To check, switch the suspected drum cartridge with another drum cartridge of a different color. If the problem occurs where you move the suspected drum cartridge, replace the suspected drum cartridge.



a. For dedicated trays, log in as admin, touch **Device** > **Tools** > **Device Settings** > **Paper Management** > **Tray Settings**. Select the tray, touch **Edit**, then change the paper type.

Note: To change the size, type, or color of paper in a dedicated tray when the control panel is locked, log in as the system administrator.

b. For trays that are set to **Fully Adjustable**:

- **Trays 1–4 and 6:** Open, then close the selected paper tray.
- **Tray 5:** Remove, then reinsert the paper.

The control panel prompts you to confirm or change the paper type.

c. At the touch screen, touch **Type**, then do one of the following:

- Select the correct paper type, then touch **Confirm**.
- Select the next heavier type of paper, then touch **Confirm**.

Note: Paper types from lightest to heaviest are:

- For uncoated paper: Plain, Lightweight Cardstock, Cardstock, and Heavyweight Cardstock.

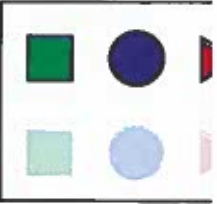
- For coated paper: Lightweight Glossy Cardstock, Glossy Cardstock, and Heavyweight Glossy Cardstock.



Spots or lines appear at regular intervals on the page, in the direction the paper moves through the printer, and in one color only.



3. If you replaced the the transfer roller, reset the counter:
 - a. At the control panel, press **Log In**. Enter system administrator login information, then touch **Enter**. For details, refer to the *System Administrator Guide*.
 - b. Touch **Device** > **Tools** > **Device Settings**.
 - c. Scroll, then touch **Supplies** > **Supply Counter Reset**.
 - d. Touch **Second Bias Transfer Roll**.
 - e. Touch **Reset Counter**.
 - f. To close the pop-up window, touch **X**, touch **admin**, then select **Logout**.



3. If the problem continues, do one of the following:
- For dedicated trays, log in as admin, touch **Device** > **Tools** > **Device Settings** > **Paper Management** > **Tray Settings**. Select the tray, touch **Edit**, then change the paper type.
 - For trays that are set to Fully Adjustable:
 - Trays 1–4 and 6: Open, then close the selected paper tray.
 - Tray 5: Remove, then reinsert the paper.The control panel prompts you to confirm or change the paper type.
 - At the touch screen, touch **Type**, then do one of the following:
 - Select the correct paper type, then touch **Confirm**.
 - Select the next heavier paper type, then touch **Confirm**.

Note: Paper types from lightest to heaviest are:

 - For uncoated paper: Plain, Lightweight Cardstock, Cardstock, and Heavyweight Cardstock.
 - For coated paper: Lightweight Glossy Cardstock, Glossy Cardstock, and Heavyweight Glossy Cardstock.
 - To identify the cause, use the Repeating Defects Page. For details, refer to the previous page.



Colors Align Incorrectly

Color has shifted outside the designated area or is superimposed over another color.



All Colors Too Light or Too Dark

Colors appear faded or too dark on print or copy.

Open, then close the front door. The printer performs an automatic registration calibration with the next print.

1. Verify that the paper you are using is the correct type for the printer and is properly loaded.
For a complete list of recommended paper for your printer, go to:
 - North America: www.xerox.com/rmlna
 - Europe: www.xerox.com/rmleu
2. Verify that the paper type is selected on the control panel and in the print driver.
3. Calibrate the printer colors. The calibration procedure adjusts the printer color balance and lightness level. At the control panel, touch **Device > Tools > Troubleshooting > Calibration > Print Calibration** or **Copy Calibration**. Follow the onscreen instructions to run the calibration procedure.

Note: For information about changing the Lightness setting in the PostScript print driver for your operating system, refer to the *Printing* chapter of the *User Guide*.

a. At the control panel, touch **Device** > **Information Pages** > **Troubleshooting Print Quality Page** > **Print**.

The Repeating Defects Page prints with instructions for identifying defective units.

b. To correct the problem, replace the items identified on the Repeating Defects Page.

4. If the problem continues, replace the transfer belt cleaner. If you replace the transfer belt cleaner, reset the counter:

a. At the control panel, press **Log In**. Enter system administrator login information, then touch **Done**. For details, refer to the *System Administrator Guide*.

b. Touch **Device** > **Tools** > **Device Settings**.

c. Scroll, then touch **Supplies** > **Supply Counter Reset**.

d. Touch **Transfer Belt Cleaner**.

e. Touch **Confirm Reset**.

f. To close the pop-up window, touch **X**, touch **admin**, then select **Logout**.

| | |
|---|--|
| <p>The grays on the printed page are not neutral; they contain color tints.</p> | <p>balance.</p> <ol style="list-style-type: none"> 1. At the control panel, touch Device > Tools > Troubleshooting > Calibration > Print Calibration. 2. Follow the onscreen instructions to run the Print Calibration procedure. |
| <p>Colors Vary Between Computers The colors printed from one computer do not match the colors printed from a different computer.</p> | <ol style="list-style-type: none"> 1. Confirm that the print driver settings for Print Quality, Color Correction, and Color By Words are identical on both computers. 2. Adjust the settings as needed. <p>Note: Print driver settings override the settings that are made at the printer control panel.</p> |
| <p>Colors Do Not Match The color produced by the printer is different from the color that it must match.</p> | <p>For more information about color matching, go to the Online Support Assistant at www.xerox.com/office/support.</p> |
| <p>Printed Colors Do Not Match Monitor Colors The color produced by the printer looks different from the color that appears on the computer monitor.</p> | <p>To view information about color matching between the monitor and the printed document, go to the Online Support Assistant at www.xerox.com/office/support.</p> |

Image Options tab. When the Preview check box is selected, color correction appear in the Preview window. Selecting and clearing the Preview check box allows you to compare the corrected image to the uncorrected image.

To adjust the color characteristics of your print job, select the Color Correction tab, then select options as needed.

- **Xerox Black and White Conversion** converts the colors to grayscale, producing a black and white print job. This setting is useful for creating black and white master documents for photocopying or faxing.
- **Color Correction** provides options to match the printer colors as closely as possible to colors on other devices, such as your computer screen or a printing press.
 - Automatic applies the best color correction to each graphic element of the document: text, artwork, and photographs.
 - **Simulate LCD Display** approximates the print job color to the colors on a LCD computer monitor.
 - **sRGB Display** approximates the print job color to an RGB (red, green, blue) display.
 - **None** removes all color correction. This option is the best choice when working with color specified within your application or operating system.
- **Xerox Automatic Color** applies the best color correction to each graphic element of the document, including text, artwork, and photographs.
- **Custom Automatic Color** provides more options for customizing colors in your print job. Use one selection to adjust the color of the text and graphics. Use the other selection to adjust the color correction applied to images. You can apply a wide range of color options to each element to simulate the outputs of different color devices.

To adjust colors using descriptive phrases, select the **Color By Words** tab. From the menus, select the phrases to build a sentence that describes the color adjustment that you want. You can build more than one sentence for the print job, affecting one color or an entire range of colors.

To change settings for each individual color parameter, select the **Color Adjustments** tab, then adjust the sliders. The sliders allow you to select a continuous range of adjustment for each of the following:

- Lightness
- Contrast
- Saturation
- Cyan to Red
- Magenta to Green
- Yellow to Blue

For more information on color matching and ICC profiles, go to www.xerox.com/office/support.

Magenta

Date Installed: Nov 30, 1979
 Reorder: 006R01744
 Estimated Pages Remaining: 500
 (Based upon this toner cartridge's average coverage: 0%)

Life Remaining
 100%
 50%
 0%

Yellow

Date Installed: Nov 30, 1979
 Reorder: 006R01745
 Estimated Pages Remaining: 11500
 (Based upon this toner cartridge's average coverage: 1%)

Life Remaining
 100%
 50%
 0%

Routine Maintenance Items

2 Drum Cartridge



Black (R1)

Date Installed: Mar 7, 2022
 Reorder: 013R00681
 Estimated Pages Remaining: 80500
 (Based on average printer job size: 1 Pages)

Life Remaining
 100%
 50%
 0%

Cyan (R2)

Date Installed: Jun 17, 2022
 Reorder: 013R00681
 Estimated Pages Remaining: 0
 (Based on average printer job size: 1 Pages)

Life Remaining
 100%
 50%
 0%

Magenta (R3)

Date Installed: Jul 5, 2022
 Reorder: 013R00681
 Estimated Pages Remaining: 0
 (Based on average printer job size: 1 Pages)

Life Remaining
 100%
 50%
 0%

Yellow (R4)

Date Installed: Feb 16, 2022
 Reorder: 013R00681
 Estimated Pages Remaining: 0
 (Based on average printer job size: 1 Pages)

Life Remaining
 100%
 50%
 0%

7 Staple Refill

Reorder: 008R12941

OK

3 Waste Container

Date Installed: Dec 19, 2023
 Reorder: 008R08102

OK

4 Transfer Belt Cleaner

Date Installed: Dec 19, 2023
 Reorder: 001R00623
 Estimated Pages Remaining: 0

Life Remaining
 100%
 50%
 0%

5 Second Bias Transfer Roller

Date Installed: Dec 19, 2023
 Reorder: 008R08103
 Estimated Pages Remaining: 0

Life Remaining
 100%
 50%
 0%

6 Fan Filter

Date Installed: Dec 19, 2023
 Reorder: 008R08104
 Estimated Pages Remaining: 0

Life Remaining
 100%
 50%
 0%

April snows bring May flowers—so get yours blooming today with 20% off perennials and annuals, now through June 1.



... and weeding and clipping with new garden tools and accessories. We've got great deals on super-sharp shears, shiny spades and shovels, and gloves and clogs to boot. But why stop there? Don't forget to visit our showroom of garden accents featuring bird baths, windchimes, gazing balls, even benches. You won't want to go back indoors!



WINGED WILDLIFE

Did you know that certain plants attract hummingbirds, butterflies, bluebirds and other winged species?

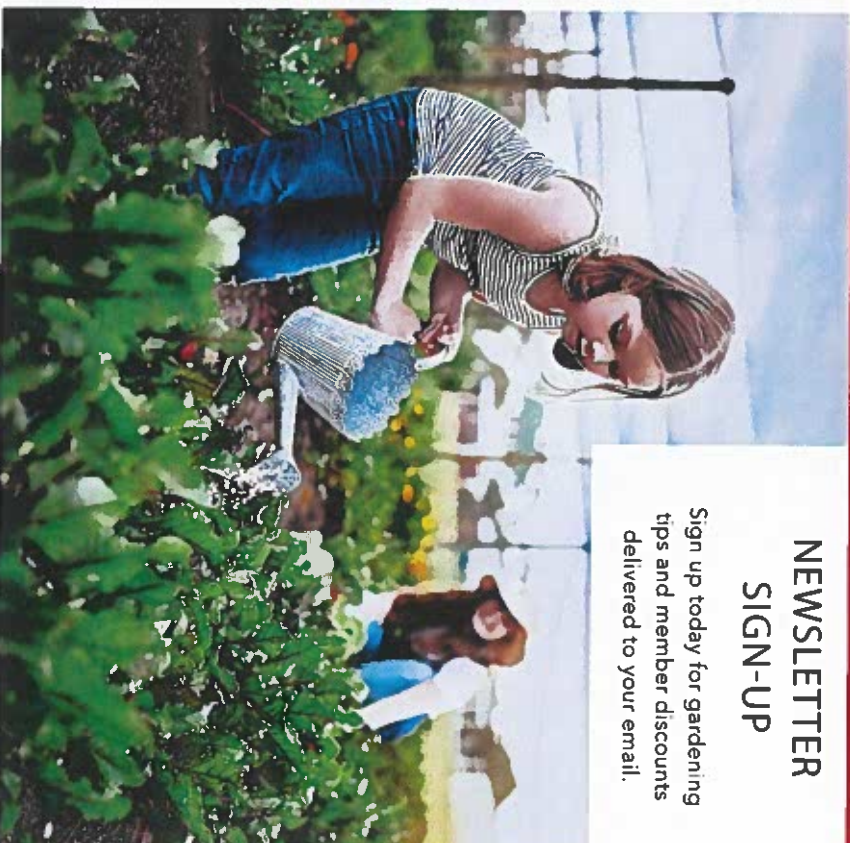
Talk to our experts about how to create a haven for these delicate beauties. You'll be amazed by the colorful new visitors who will come to sample the pollen and alight on soft flower petals.

ALPINE RIDGE GARDEN CENTERS

info@alpinegardencenter.com

THE ALPINE RIDGE APPROACH TO GARDENING

We're about sustainable gardening, embracing growth without the use of chemicals. Our organic compost replenishes the soil with natural nutrients. We have plants that will help keep pesky insects away, without the need for pesticides. Even our containers are made of recycled paper products that will nurture your plants. It's our pledge to keep your gardens, lawns and all who visit them free from pollutants and full of beauty.



NEWSLETTER SIGN-UP

Sign up today for gardening tips and member discounts delivered to your email.

XEROX™

Printed on a Xerox® Altalink® C8200 Series Color Multifunction Printer © 2023 Xerox Corporation. All rights reserved. Xerox®, and Altalink® are trademarks of Xerox Corporation in the United States and/or other countries. 10/23 TSK-5073 BR27311 AC895-06UA

- | | | |
|----|--|----------------------------------|
| 5 | CG Times Bold Italic «Esc»(Symbol set«Esc»(s1p«size»v1s3b4101T | 'ABCDEFfGabcdefg0123456789&?!,.' |
| 6 | CG Omega «Esc»(Symbol set«Esc»(s1p«size»v0s0b4113T | 'ABCDEFfGabcdefg0123456789&?!,.' |
| 7 | CG Omega Bold «Esc»(Symbol set«Esc»(s1p«size»v0s3b4113T | 'ABCDEFfGabcdefg0123456789&?!,.' |
| 8 | CG Omega Italic «Esc»(Symbol set«Esc»(s1p«size»v1s0b4113T | 'ABCDEFfGabcdefg0123456789&?!,.' |
| 9 | CG Omega Bold Italic «Esc»(Symbol set«Esc»(s1p«size»v1s3b4113T | 'ABCDEFfGabcdefg0123456789&?!,.' |
| 10 | Coronet «Esc»(Symbol set«Esc»(s1p«size»v1s0b4116T | 'ABCDEFfGabcdefg0123456789&?!,.' |
| 11 | Clarendon Condensed «Esc»(Symbol set«Esc»(s1p«size»v4s3b4140T | 'ABCDEFfGabcdefg0123456789&?!,.' |
| 12 | Univers Medium «Esc»(Symbol set«Esc»(s1p«size»v0s0b4148T | 'ABCDEFfGabcdefg0123456789&?!,.' |
| 13 | Univers Bold «Esc»(Symbol set«Esc»(s1p«size»v0s3b4148T | 'ABCDEFfGabcdefg0123456789&?!,.' |
| 14 | Univers Medium Italic «Esc»(Symbol set«Esc»(s1p«size»v1s0b4148T | 'ABCDEFfGabcdefg0123456789&?!,.' |
| 15 | Univers Bold Italic «Esc»(Symbol set«Esc»(s1p«size»v1s3b4148T | 'ABCDEFfGabcdefg0123456789&?!,.' |
| 16 | Univers Medium Condensed «Esc»(Symbol set«Esc»(s1p«size»v4s0b4148T | 'ABCDEFfGabcdefg0123456789&?!,.' |
| 17 | Univers Bold Condensed «Esc»(Symbol set«Esc»(s1p«size»v4s3b4148T | 'ABCDEFfGabcdefg0123456789&?!,.' |
| 18 | Univers Medium Condensed Italic «Esc»(Symbol set«Esc»(s1p«size»v5s0b4148T | 'ABCDEFfGabcdefg0123456789&?!,.' |

- 23 «Esc»(Symbol set«Esc»(s1p«size»v0s0b4197T
- 24 Garamond Halbtrett
«Esc»(Symbol set«Esc»(s1p«size»v0s3b4197T 'ABCDEFfGabcdeffg0123456789&?!,,'
- 25 Garamond Kursiv
«Esc»(Symbol set«Esc»(s1p«size»v1s0b4197T 'ABCDEFfGabcdeffg0123456789&?!,,'
- 26 Garamond Kursiv Halbtrett
«Esc»(Symbol set«Esc»(s1p«size»v1s3b4197T 'ABCDEFfGabcdeffg0123456789&?!,,'
- 27 Harigold
«Esc»(Symbol set«Esc»(s1p«size»v0s0b4297T 'ABCDEFfGabcdeffg0123456789&?!,,'
- 28 Albertus Medium
«Esc»(Symbol set«Esc»(s1p«size»v0s1b4362T 'ABCDEFfGabcdeffg0123456789&?!,,'
- 29 Albertus Extra Bold
«Esc»(Symbol set«Esc»(s1p«size»v0s4b4362T 'ABCDEFfGabcdeffg0123456789&?!,,'
- 30 Ryadh
«Esc»(Symbol set«Esc»(s1p«size»v0s0b4859T ABCDEFfGabcdeffg0123456789&?!,,'
- 31 Ryadh Bold
«Esc»(Symbol set«Esc»(s1p«size»v0s3b4859T ABCDEFfGabcdeffg0123456789&?!,,'
- 32 Malka
«Esc»(Symbol set«Esc»(s1p«size»v0s0b16584T ABCDEFfGabcdeffg0123456789&?!,,'
- 33 Malka Bold
«Esc»(Symbol set«Esc»(s1p«size»v0s3b16584T ABCDEFfGabcdeffg0123456789&?!,,'
- 34 Malka Italic
«Esc»(Symbol set«Esc»(s1p«size»v1s0b16584T ABCDEFfGabcdeffg0123456789&?!,,'
- 35 Dorit
«Esc»(Symbol set«Esc»(s1p«size»v0s0b16585T ABCDEFfGabcdeffg0123456789&?!,,'
- 36 Dorit Bold
«Esc»(Symbol set«Esc»(s1p«size»v0s3b16585T ABCDEFfGabcdeffg0123456789&?!,,'

- 41 Arial Italic
«Esc»(Symbol set«Esc»(s1p«size»v1s0b16602T
'ABCDEFfGabcde!g0123456789&?!,.'
- 42 Arial Bold Italic
«Esc»(Symbol set«Esc»(s1p«size»v1s3b16602T
'ABCDEFfGabcde!g0123456789&?!,.'
- 43 Times New Roman
«Esc»(Symbol set«Esc»(s1p«size»v0s0b16901T
'ABCDEFfGabcde!g0123456789&?!,.'
- 44 Times New Roman Bold
«Esc»(Symbol set«Esc»(s1p«size»v0s3b16901T
'ABCDEFfGabcde!g0123456789&?!,.'
- 45 Times New Roman Italic
«Esc»(Symbol set«Esc»(s1p«size»v1s0b16901T
'ABCDEFfGabcde!g0123456789&?!,.'
- 46 Times New Roman Bold Italic
«Esc»(Symbol set«Esc»(s1p«size»v1s3b16901T
'ABCDEFfGabcde!g0123456789&?!,.'
- 47 Helvetica
«Esc»(Symbol set«Esc»(s1p«size»v0s0b24580T
'ABCDEFfGabcde!g0123456789&?!,.'
- 48 Helvetica Bold
«Esc»(Symbol set«Esc»(s1p«size»v0s3b24580T
'ABCDEFfGabcde!g0123456789&?!,.'
- 49 Helvetica Oblique
«Esc»(Symbol set«Esc»(s1p«size»v1s0b24580T
'ABCDEFfGabcde!g0123456789&?!,.'
- 50 Helvetica Bold Oblique
«Esc»(Symbol set«Esc»(s1p«size»v1s3b24580T
'ABCDEFfGabcde!g0123456789&?!,.'
- 51 Helvetica Narrow
«Esc»(Symbol set«Esc»(s1p«size»v4s0b24580T
'ABCDEFfGabcde!g0123456789&?!,.'
- 52 Helvetica Narrow Bold
«Esc»(Symbol set«Esc»(s1p«size»v4s3b24580T
'ABCDEFfGabcde!g0123456789&?!,.'
- 53 Helvetica Narrow Oblique
«Esc»(Symbol set«Esc»(s1p«size»v5s0b24580T
'ABCDEFfGabcde!g0123456789&?!,.'
- 54 Helvetica Narrow Bold Oblique
«Esc»(Symbol set«Esc»(s1p«size»v5s3b24580T
'ABCDEFfGabcde!g0123456789&?!,.'

- 59 ITC Avant Garde Book
«Esc»(Symbol set«Esc»(s1p«size»v0s0b24607T
'ABCDEFgabcde!fg0123456789&?!,.'
- 60 ITC Avant Garde DemiBold
«Esc»(Symbol set«Esc»(s1p«size»v0s2b24607T
'ABCDEFgabcde!fg0123456789&?!,.'
- 61 ITC Avant Garde Book Oblique
«Esc»(Symbol set«Esc»(s1p«size»v1s0b24607T
'ABCDEFgabcde!fg0123456789&?!,.'
- 62 ITC Avant Garde DemiBold Oblique
«Esc»(Symbol set«Esc»(s1p«size»v1s2b24607T
'ABCDEFgabcde!fg0123456789&?!,.'
- 63 ITC Bookman Light
«Esc»(Symbol set«Esc»(s1p«size»v0s-3b24623T
'ABCDEFgabcde!fg0123456789&?!,.'
- 64 ITC Bookman DemiBold
«Esc»(Symbol set«Esc»(s1p«size»v0s2b24623T
'ABCDEFgabcde!fg0123456789&?!,.'
- 65 ITC Bookman Light Italic
«Esc»(Symbol set«Esc»(s1p«size»v1s-3b24623T
'ABCDEFgabcde!fg0123456789&?!,.'
- 66 ITC Bookman DemiBold Italic
«Esc»(Symbol set«Esc»(s1p«size»v1s2b24623T
'ABCDEFgabcde!fg0123456789&?!,.'
- 67 New Century Schoolbook Roman
«Esc»(Symbol set«Esc»(s1p«size»v0s0b24703T
'ABCDEFgabcde!fg0123456789&?!,.'
- 68 New Century Schoolbook Bold
«Esc»(Symbol set«Esc»(s1p«size»v0s3b24703T
'ABCDEFgabcde!fg0123456789&?!,.'
- 69 New Century Schoolbook Italic
«Esc»(Symbol set«Esc»(s1p«size»v1s0b24703T
'ABCDEFgabcde!fg0123456789&?!,.'
- 70 New Century Schoolbook Bold Ital
«Esc»(Symbol set«Esc»(s1p«size»v1s3b24703T
'ABCDEFgabcde!fg0123456789&?!,.'
- 71 Times Roman
«Esc»(Symbol set«Esc»(s1p«size»v0s0b25093T
'ABCDEFgabcde!fg0123456789&?!,.'
- 72 Times Roman Bold
«Esc»(Symbol set«Esc»(s1p«size»v0s3b25093T
'ABCDEFgabcde!fg0123456789&?!,.'

«Esc»(19M«Esc»(s1p«size»v0s0b45358T

Wingdings
«Esc»(579L«Esc»(s1p«size»v0s0b31402T

Zapf Dingbats
«Esc»(14L«Esc»(s1p«size»v0s0b45101T

Courier Bold
«Esc»(Symbol set«Esc»(s0p«pitch»h0s3b4099T

Courier Italic
«Esc»(Symbol set«Esc»(s0p«pitch»h1s0b4099T

Courier Bold Italic
«Esc»(Symbol set«Esc»(s0p«pitch»h1s3b4099T

Letter Gothic
«Esc»(Symbol set«Esc»(s0p«pitch»h0s0b4102T

Letter Gothic Bold
«Esc»(Symbol set«Esc»(s0p«pitch»h0s3b4102T

Letter Gothic Italic
«Esc»(Symbol set«Esc»(s0p«pitch»h1s0b4102T

Naskh
«Esc»(Symbol set«Esc»(s0p«pitch»h0s0b4124T

Naskh Bold
«Esc»(Symbol set«Esc»(s0p«pitch»h0s3b4124T

Koufi
«Esc»(Symbol set«Esc»(s0p«pitch»h0s0b4264T

Koufi Bold
«Esc»(Symbol set«Esc»(s0p«pitch»h0s3b4264T

Courier PS
«Esc»(Symbol set«Esc»(s0p«pitch»h0s0b24579T

Wingdings
«Esc»(579L«Esc»(s1p«size»v0s0b31402T

Zapf Dingbats
«Esc»(14L«Esc»(s1p«size»v0s0b45101T

Courier Bold
«Esc»(Symbol set«Esc»(s0p«pitch»h0s3b4099T

Courier Italic
«Esc»(Symbol set«Esc»(s0p«pitch»h1s0b4099T

Courier Bold Italic
«Esc»(Symbol set«Esc»(s0p«pitch»h1s3b4099T

Letter Gothic
«Esc»(Symbol set«Esc»(s0p«pitch»h0s0b4102T

Letter Gothic Bold
«Esc»(Symbol set«Esc»(s0p«pitch»h0s3b4102T

Letter Gothic Italic
«Esc»(Symbol set«Esc»(s0p«pitch»h1s0b4102T

Naskh
«Esc»(Symbol set«Esc»(s0p«pitch»h0s0b4124T

Naskh Bold
«Esc»(Symbol set«Esc»(s0p«pitch»h0s3b4124T

Koufi
«Esc»(Symbol set«Esc»(s0p«pitch»h0s0b4264T

Koufi Bold
«Esc»(Symbol set«Esc»(s0p«pitch»h0s3b4264T

Courier PS
«Esc»(Symbol set«Esc»(s0p«pitch»h0s0b24579T

«Esc»(Symbol set«Esc»(s0p«pitch»h0s0b24579T



'ABCDEFGabcdefg0123456789&?1..,'

'ABCDEFGabcdefg0123456789&?1..,'

'ABCDEFGabcdefg0123456789&?1..,'

'ABCDEFGabcdefg0123456789&?1..,'

'ABCDEFGabcdefg0123456789&?1..,'

'ABCDEFGabcdefg0123456789&?1..,'

'ABCDEFGabcdefg0123456789&?1..,'

'ABCDEFGabcdefg0123456789&?1..,'

'ABCDEFGabcdefg0123456789&?1..,'

'ABCDEFGabcdefg0123456789&?1..,'

'ABCDEFGabcdefg0123456789&?1..,'



